

**Anti-Ki-67 Antibody**

**Our Anti-Ki-67 primary antibody from PhosphoSolutions is chicken polyclonal. It detects human, mouse**  
**Catalog # AN1431**

**Specification**

---

**Anti-Ki-67 Antibody - Product Information**

Application	WB, IHC
Primary Accession	<a href="#">P46013</a>
Reactivity	Bovine
Host	Chicken
Clonality	Polyclonal
Isotype	IgY
Calculated MW	358694

**Anti-Ki-67 Antibody - Additional Information**

Gene ID **4288**

**Other Names**

Antigen identified by monoclonal antibody Ki 67 antibody, Antigen identified by monoclonal antibody Ki-67 antibody, Antigen KI-67 antibody, Antigen KI67 antibody, Antigen Ki67 antibody, Ki67 antibody, KI67\_HUMAN antibody, KIA antibody, Marker of proliferation Ki-67 antibody, MIB 1 antibody, MIB antibody, MKI67 antibody, PPP1R105 antibody, Proliferation marker protein Ki-67 antibody, Proliferation related Ki 67 antigen antibody, Protein phosphatase 1 regulatory subunit 105 antibody, RP11-380J17.2 antibody

**Target/Specificity**

Ki-67 is a nuclear protein that is considered to be essential for cellular proliferation since it is expressed only in active phases of the cell cycle (G1, S, G2 and mitosis) but not in resting phase G0 (Scholzen & Gerdes 2000). Ki-67 antibodies have therefore been widely used as markers of cell growth. Ki-67 has further been identified as a predicative and prognostic marker in breast, lung, cervical and other cancers (Yerushalmi et al., 2010; Folescu et al., 2018; Das et al., 2018).

**Dilution**

WB~~1:1000  
IHC~~1:100~500

**Format**

Total IgY fraction

**Storage**

Maintain refrigerated at 2-8°C for up to 6 months. For long term storage store at -20°C in small aliquots to prevent freeze-thaw cycles.

**Precautions**

Anti-Ki-67 Antibody is for research use only and not for use in diagnostic or therapeutic procedures.

**Shipping**

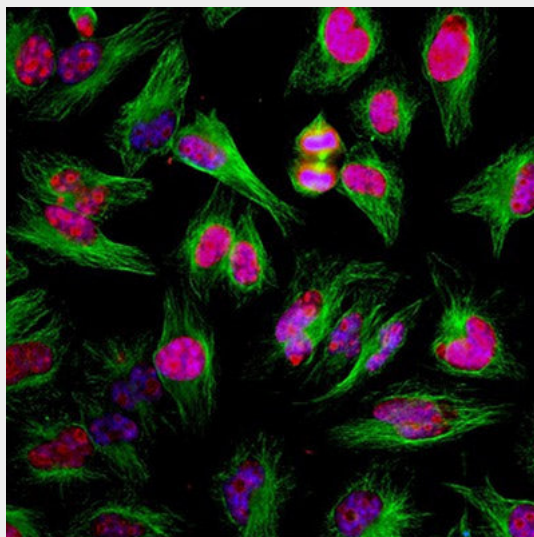
Blue Ice

## Anti-Ki-67 Antibody - Protocols

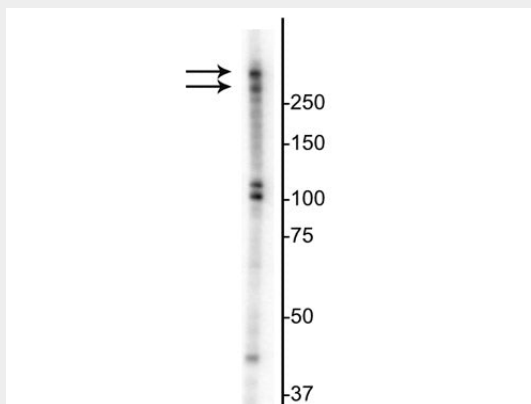
Provided below are standard protocols that you may find useful for product applications.

- [Western Blot](#)
- [Blocking Peptides](#)
- [Dot Blot](#)
- [Immunohistochemistry](#)
- [Immunofluorescence](#)
- [Immunoprecipitation](#)
- [Flow Cytometry](#)
- [Cell Culture](#)

## Anti-Ki-67 Antibody - Images



Immunostaining of HeLa cells showing specific labeling of Ki-67 (cat. 1007-Ki67, 1:2000, red) present in cytoplasmic microtubules. Additional immunostaining done with  $\beta$ -tubulin in green and nuclear staining with DAPI (blue). During cell cycle Ki-67 protein is predominantly expressed in the nucleoli of cells during mitosis and interphase, and is not present during quiescence.



Western blot of serum starved then re-fed for 2.5 hr T47D cell lysate showing specific immunolabeling of the ~345/395 Ki-67 isoforms.

## Anti-Ki-67 Antibody - Background

Ki-67 is a nuclear protein that is considered to be essential for cellular proliferation since it is expressed only in active phases of the cell cycle (G1, S, G2 and mitosis) but not in resting phase G0 (Scholzen & Gerdes 2000). Ki-67 antibodies have therefore been widely used as markers of cell growth. Ki-67 has further been identified as a predicative and prognostic marker in breast, lung, cervical and other cancers (Yerushalmi et al., 2010; Folescu et al., 2018; Das et al., 2018).