

**Anti-Ki-67 Antibody**

**Our Anti-Ki-67 Antibody primary antibody from PhosphoSolutions is mouse monoclonal. It detects human**  
**Catalog # AN1432**

**Specification**

---

**Anti-Ki-67 Antibody - Product Information**

|                   |                        |
|-------------------|------------------------|
| Application       | WB, IHC                |
| Primary Accession | <a href="#">P46013</a> |
| Host              | Mouse                  |
| Clonality         | Monoclonal             |
| Isotype           | IgG1                   |
| Calculated MW     | 358694                 |

**Anti-Ki-67 Antibody - Additional Information**

Gene ID **4288**

**Other Names**

Antigen identified by monoclonal antibody Ki 67 antibody, Antigen identified by monoclonal antibody Ki-67 antibody, Antigen KI-67 antibody, Antigen KI67 antibody, Antigen Ki67 antibody, Ki67 antibody, KI67\_HUMAN antibody, KIA antibody, Marker of proliferation Ki-67 antibody, MIB 1 antibody, MIB antibody, MKI67 antibody, PPP1R105 antibody, Proliferation marker protein Ki-67 antibody, Proliferation related Ki 67 antigen antibody, Protein phosphatase 1 regulatory subunit 105 antibody, RP11-380J17.2 antibody

**Target/Specificity**

Ki-67 is a nuclear protein that is considered to be essential for cellular proliferation since it is expressed only in active phases of the cell cycle (G1, S, G2 and mitosis) but not in resting phase G0 (Scholzen & Gerdes 2000). Ki-67 antibodies have therefore been widely used as markers of cell growth. Ki-67 has further been identified as a predicative and prognostic marker in breast, lung, cervical and other cancers (Yerushalmi et al., 2010; Folescu et al., 2018; Das et al., 2018).

**Dilution**

WB~~1:1000  
IHC~~1:100~500

**Format**

Protein G Purified

**Storage**

Maintain refrigerated at 2-8°C for up to 6 months. For long term storage store at -20°C in small aliquots to prevent freeze-thaw cycles.

**Precautions**

Anti-Ki-67 Antibody is for research use only and not for use in diagnostic or therapeutic procedures.

**Shipping**

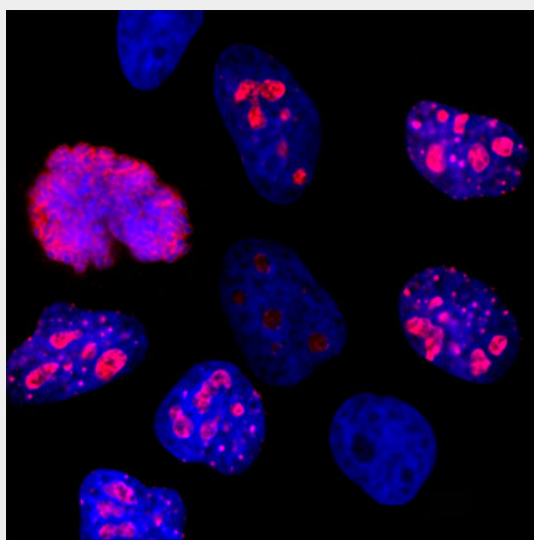
Blue Ice

## Anti-Ki-67 Antibody - Protocols

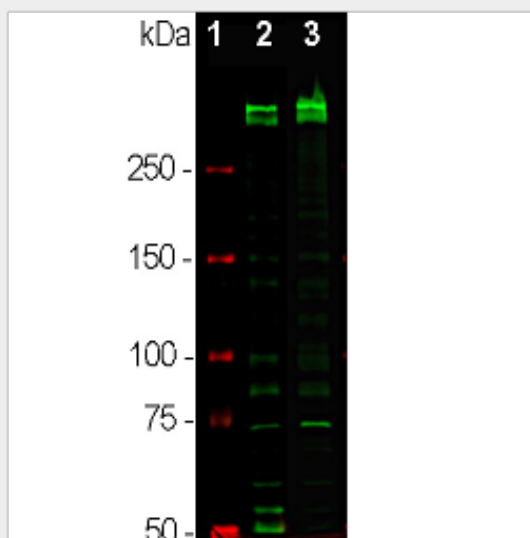
Provided below are standard protocols that you may find useful for product applications.

- [Western Blot](#)
- [Blocking Peptides](#)
- [Dot Blot](#)
- [Immunohistochemistry](#)
- [Immunofluorescence](#)
- [Immunoprecipitation](#)
- [Flow Cytometry](#)
- [Cell Culture](#)

## Anti-Ki-67 Antibody - Images



Immunostaining of HeLa cells showing specific labeling of Ki-67 in the nucleoli of rapidly dividing cells, (1:2000) in red. DNA is stained blue.



Western blot of dividing HeLa cell cultures (2) and HEK293 cell cultures (3) showing specific immunolabeling of the ~345/395 Ki-67 isoforms.

**Anti-Ki-67 Antibody - Background**

Ki-67 is a nuclear protein that is considered to be essential for cellular proliferation since it is expressed only in active phases of the cell cycle (G1, S, G2 and mitosis) but not in resting phase G0 (Scholzen & Gerdes 2000). Ki-67 antibodies have therefore been widely used as markers of cell growth. Ki-67 has further been identified as a predicative and prognostic marker in breast, lung, cervical and other cancers (Yerushalmi et al., 2010; Folescu et al., 2018; Das et al., 2018).