

Anti-Microtubule Associated Protein 2 (MAP2) Antibody
Our Anti-Microtubule Associated Protein 2 (MAP2) primary antibody from
PhosphoSolutions is mouse mon
Catalog # AN1435

Specification

Anti-Microtubule Associated Protein 2 (MAP2) Antibody - Product Information

Application	WB, IHC
Primary Accession	P11137
Reactivity	Bovine, Chicken
Host	Mouse
Clonality	Monoclonal
Isotype	IgG1
Calculated MW	199526

Anti-Microtubule Associated Protein 2 (MAP2) Antibody - Additional Information

Gene ID **4133**

Other Names

DKFZp686I2148 antibody, MAP 2 antibody, MAP dendrite specific antibody, MAP-2 antibody, MAP2 antibody, MAP2A antibody, MAP2B antibody, MAP2C antibody, Microtubule associated protein 2 antibody, Microtubule-associated protein 2 antibody, MTAP2_HUMAN antibody

Target/Specificity

Microtubules are 25nm diameter protein rods found in most kinds of eukaryotic cells. They are polymerized from a dimeric subunit made of one α subunit and one β tubulin subunit. Microtubules are associated with a family of proteins called microtubule associated proteins (MAPs), which includes the protein τ (tau) and a group of proteins referred to as MAP1, MAP2, MAP3, MAP4 and MAP5 (Kindler & Gardner 1994). MAP2 is made up of two ~280 kDa apparent molecular weight bands referred to as MAP2a and MAP2b. A third lower molecular weight form, usually called MAP2c, corresponds to a pair of protein bands running at ~70 kDa on SDS-PAGE gels. All these MAP2 forms are derived from a single gene by alternate transcription, and all share a C-terminal sequence which includes either three or four microtubule binding peptide sequences, which are very similar to those found in the related microtubule binding protein tau. MAP2 isoforms are expressed only in neuronal cells and specifically in the perikarya and dendrites of these cells. MAP2 has been recently shown to be the specific receptor for the neurosteroid pregnenolone (Fontaine-Lenore V. et al., 2006).

Dilution

WB~~1:1000
IHC~~1:100~500

Format

Protein G Purified

Storage

Maintain refrigerated at 2-8°C for up to 6 months. For long term storage store at -20°C in small aliquots to prevent freeze-thaw cycles.

Precautions

Anti-Microtubule Associated Protein 2 (MAP2) Antibody is for research use only and not for use in diagnostic or therapeutic procedures.

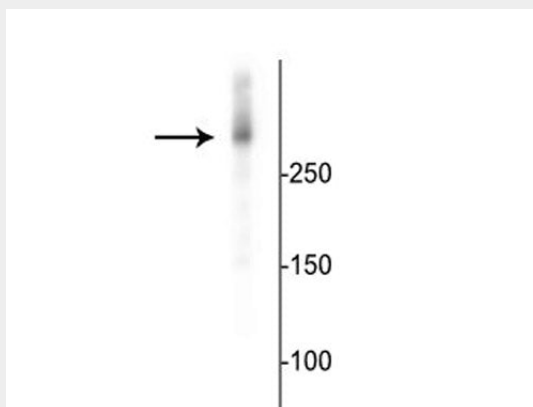
Shipping

Blue Ice

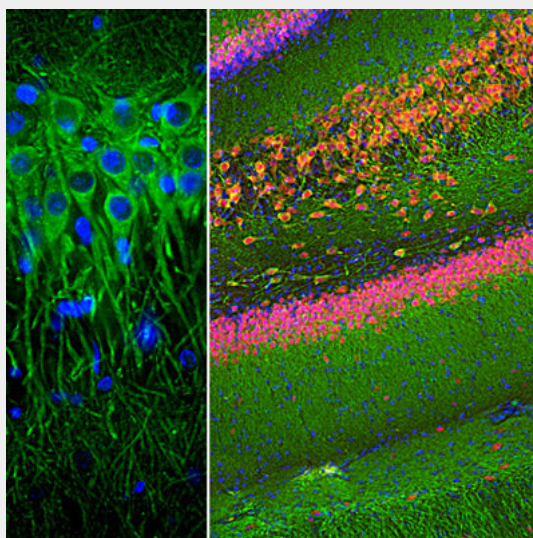
Anti-Microtubule Associated Protein 2 (MAP2) Antibody - Protocols

Provided below are standard protocols that you may find useful for product applications.

- [Western Blot](#)
- [Blocking Peptides](#)
- [Dot Blot](#)
- [Immunohistochemistry](#)
- [Immunofluorescence](#)
- [Immunoprecipitation](#)
- [Flow Cytometry](#)
- [Cell Culture](#)

Anti-Microtubule Associated Protein 2 (MAP2) Antibody - Images

Western blot of mouse cortical lysate showing specific immunolabeling of the ~280 kDa MAP2 protein.



Immunostaining of rat hippocampus showing specific labeling of neuronal dendrites and perikarya with Anti-Microtubule Associated Protein 2 in green, FOX3 in red and nuclei in blue.

Anti-Microtubule Associated Protein 2 (MAP2) Antibody - Background

Microtubules are 25nm diameter protein rods found in most kinds of eukaryotic cells. They are polymerized from a dimeric subunit made of one α subunit and one β tubulin subunit. Microtubules are associated with a family of proteins called microtubule associated proteins (MAPs), which includes the protein τ (tau) and a group of proteins referred to as MAP1, MAP2, MAP3, MAP4 and MAP5 (Kindler & Gardner 1994). MAP2 is made up of two ~280 kDa apparent molecular weight bands referred to as MAP2a and MAP2b. A third lower molecular weight form, usually called MAP2c, corresponds to a pair of protein bands running at ~70 kDa on SDS-PAGE gels. All these MAP2 forms are derived from a single gene by alternate transcription, and all share a C-terminal sequence which includes either three or four microtubule binding peptide sequences, which are very similar to those found in the related microtubule binding protein tau. MAP2 isoforms are expressed only in neuronal cells and specifically in the perikarya and dendrites of these cells. MAP2 has been recently shown to be the specific receptor for the neurosteroid pregnenolone (Fontaine-Lenore V. et al., 2006).