

Anti-MeCP2 (Ser421) Antibody

Our Anti-MeCP2 (Ser421) rabbit polyclonal phosphospecific primary antibody from PhosphoSolutions is
Catalog # AN1445

Specification

Anti-MeCP2 (Ser421) Antibody - Product Information

Primary Accession	O9Z2D6
Host	Rabbit
Clonality	Polyclonal
Isotype	IgG
Calculated MW	52307

Anti-MeCP2 (Ser421) Antibody - Additional Information

Gene ID **17257**

Other Names

AUTSX 3 antibody, AUTSX3 antibody, DKFZp686A24160 antibody, Mbd 5 antibody, Mbd5 antibody, MECP 2 antibody, MeCP 2 protein antibody, MeCP-2 protein antibody, Mecp2 antibody, MECP2_HUMAN antibody, Methyl CpG binding protein 2 (Rett syndrome) antibody, Methyl CpG binding protein 2 antibody, Methyl-CpG-binding protein 2 antibody, MRX 16 antibody, MRX 79 antibody, MRX16 antibody, MRX79 antibody, MRXS 13 antibody, MRXS13 antibody, MRXSL antibody, PPMX antibody, RS antibody, RTS antibody, RTT antibody, WBP 10 antibody, WBP10 antibody

Target/Specificity

MeCP2 (Methyl-CpG Binding Protein 2) is a chromosomal protein that binds to methylated DNA. It can bind specifically to a single methyl-CpG pair and is not influenced by sequences flanking the methyl-CpGs. MeCP2 has been shown to mediate transcriptional repression through interaction with histone deacetylase and the corepressor SIN3A (Nan et al., 1998). Defects in MeCP2 are the cause of Rett syndrome (RTT) (Amir et al., 1999). RTT is an X-linked dominant disease; it is a progressive neurologic developmental disorder and one of the most common causes of mental retardation in females. Recent studies have reported a new phosphorylation site at Ser-421. Phosphorylation and dephosphorylation of this site may be involved in regulation of behavioral responses to chronic antidepressant treatment (Hutchinson et al., 2012).

Format

Antigen Affinity Purified from Pooled Serum

Storage

Maintain refrigerated at 2-8°C for up to 6 months. For long term storage store at -20°C in small aliquots to prevent freeze-thaw cycles.

Precautions

Anti-MeCP2 (Ser421) Antibody is for research use only and not for use in diagnostic or therapeutic procedures.

Shipping

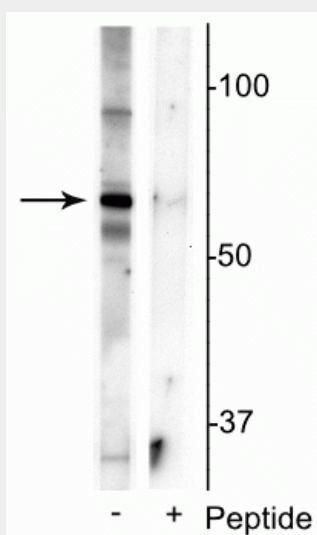
Blue Ice

Anti-MeCP2 (Ser421) Antibody - Protocols

Provided below are standard protocols that you may find useful for product applications.

- [Western Blot](#)
- [Blocking Peptides](#)
- [Dot Blot](#)
- [Immunohistochemistry](#)
- [Immunofluorescence](#)
- [Immunoprecipitation](#)
- [Flow Cytometry](#)
- [Cell Culture](#)

Anti-MeCP2 (Ser421) Antibody - Images



Western blot of mouse whole brain lysate showing specific immunolabeling of the ~55 kDa truncated MeCP2 protein phosphorylated at Ser421 in the first lane (-). Phosphospecificity is shown in the second lane (+) where immunolabeling is blocked by preadsorption of the phosphopeptide used as the antigen, but not by the corresponding non-phosphopeptide (not shown).

Anti-MeCP2 (Ser421) Antibody - Background

MeCP2 (Methyl-CpG Binding Protein 2) is a chromosomal protein that binds to methylated DNA. It can bind specifically to a single methyl-CpG pair and is not influenced by sequences flanking the methyl-CpGs. MeCP2 has been shown to mediate transcriptional repression through interaction with histone deacetylase and the corepressor SIN3A (Nan et al., 1998). Defects in MeCP2 are the cause of Rett syndrome (RTT) (Amir et al., 1999). RTT is an X-linked dominant disease; it is a progressive neurologic developmental disorder and one of the most common causes of mental retardation in females. Recent studies have reported a new phosphorylation site at Ser-421. Phosphorylation and dephosphorylation of this site may be involved in regulation of behavioral responses to chronic antidepressant treatment (Hutchinson et al., 2012).