

Anti-MEK5 (Ser311, Thr315) Antibody

Our Anti-MEK5 (Ser311, Thr315) rabbit polyclonal phosphospecific primary antibody from PhosphoSoluti
Catalog # AN1450

Specification

Anti-MEK5 (Ser311, Thr315) Antibody - Product Information

Primary Accession	Q62862
Reactivity	Bovine
Host	Rabbit
Clonality	Polyclonal
Isotype	IgG
Calculated MW	50198

Anti-MEK5 (Ser311, Thr315) Antibody - Additional Information

Gene ID **29568**

Other Names

Dual specificity mitogen activated protein kinase kinase 5 antibody, Dual specificity mitogen-activated protein kinase kinase 5 antibody, EC 2.7.12.2 antibody, HsT17454 antibody, MAP kinase kinase 5 antibody, MAP kinase kinase MEK5b antibody, MAP2K5 antibody, MAPK/ERK kinase 5 antibody, MAPKK 5 antibody, MAPKK5 antibody, MEK 5 antibody, mitogen-activated protein kinase kinase 5 antibody, MKK5 antibody, MP2K5_HUMAN antibody, PRKMK5 antibody, Protein kinase mitogen-activated kinase 5 antibody, SAPKK5 antibody, SKK5 antibody

Target/Specificity

MEK5 (also known as MKK5) is a dual specificity serine/threonine protein kinase belonging to the MAP kinase kinase family. MEK5 has been shown to specifically activate ERK5 (Zhou et al., 1995) whereas MEK5 itself is regulated by MEKK3 (Chao et al., 1999). An important link between MEK5 and metastatic prostate cancer has been demonstrated (Mehta et al., 2003). Dual phosphorylation of Ser-311 and Thr-315 have been implicated in cell proliferation (Cameron et al., 2004).

Format

Antigen Affinity Purified from Pooled Serum

Storage

Maintain refrigerated at 2-8°C for up to 6 months. For long term storage store at -20°C in small aliquots to prevent freeze-thaw cycles.

Precautions

Anti-MEK5 (Ser311, Thr315) Antibody is for research use only and not for use in diagnostic or therapeutic procedures.

Shipping

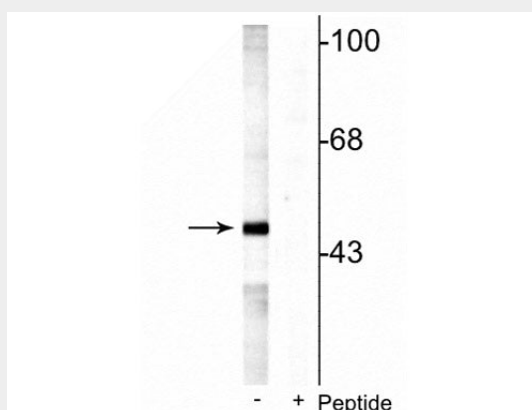
Blue Ice

Anti-MEK5 (Ser311, Thr315) Antibody - Protocols

Provided below are standard protocols that you may find useful for product applications.

- [Western Blot](#)
- [Blocking Peptides](#)
- [Dot Blot](#)
- [Immunohistochemistry](#)
- [Immunofluorescence](#)
- [Immunoprecipitation](#)
- [Flow Cytometry](#)
- [Cell Culture](#)

Anti-MEK5 (Ser311, Thr315) Antibody - Images



Western blot of rat testes lysate showing specific labeling of the ~49 kDa MEK5 protein phosphorylated at Ser311 Thr315 in the first lane (-). Phosphospecificity is shown in the second lane (+) where immunolabeling is blocked by preadsorption of the phosphopeptide used as the antigen, but not by the corresponding non-phosphopeptide (not shown).

Anti-MEK5 (Ser311, Thr315) Antibody - Background

MEK5 (also known as MKK5) is a dual specificity serine/threonine protein kinase belonging to the MAP kinase kinase family. MEK5 has been shown to specifically activate ERK5 (Zhou et al., 1995) whereas MEK5 itself is regulated by MEKK3 (Chao et al., 1999). An important link between MEK5 and metastatic prostate cancer has been demonstrated (Mehta et al., 2003). Dual phosphorylation of Ser-311 and Thr-315 have been implicated in cell proliferation (Cameron et al., 2004).