

Anti-Mitochondrial Fission Factor (Mff) Antibody
Our Anti-Mitochondrial Fission Factor (Mff) primary antibody from PhosphoSolutions is rabbit polyclonal
Catalog # AN1456

Specification

Anti-Mitochondrial Fission Factor (Mff) Antibody - Product Information

Application	WB
Primary Accession	O9GZY8
Reactivity	Bovine
Host	Rabbit
Clonality	Polyclonal
Isotype	IgG
Calculated MW	38465

Anti-Mitochondrial Fission Factor (Mff) Antibody - Additional Information

Gene ID **56947**

Other Names

C2orf33 antibody, Chromosome 2 open reading frame 33 antibody, DKFZp666J168 antibody, GL004 antibody, Mff antibody, MFF_HUMAN antibody, MGC110913 antibody, Mitochondrial fission factor antibody, OTTHUMP00000164235 antibody

Target/Specificity

Mitochondrial fission factor, also known as Mff, is a tail-anchored, outer mitochondrial membrane protein that is part of a complex process controlling mitochondrial and peroxisomal fission in conjunction with Drp1 and Fis1 (Schrader and Yoon, 2007). The rate of mitochondrial fission and fusion balance each other for cell growth and survival of mitochondria. Fission can be greatly accelerated when cytochrome c is released during apoptosis (Desagher and Martinou, 2000). Mff was identified as an important component of the process through siRNA transfected cells, isolating the protein in the P2 pellet and demonstrating that Mff is exposed to the cytosol (Gandre-Babbe and van der Bliek 2008). Mff has been identified at different stages of the fission process working alongside, rather than in complex with, Fis1 suggesting that Mff contributes to fission independent of the Fis1 complex (Gandre-Babbe and van der Bliek 2008).

Dilution

WB~~1:1000

Format

Neat Serum

Storage

Maintain refrigerated at 2-8°C for up to 6 months. For long term storage store at -20°C in small aliquots to prevent freeze-thaw cycles.

Precautions

Anti-Mitochondrial Fission Factor (Mff) Antibody is for research use only and not for use in diagnostic or therapeutic procedures.

Shipping

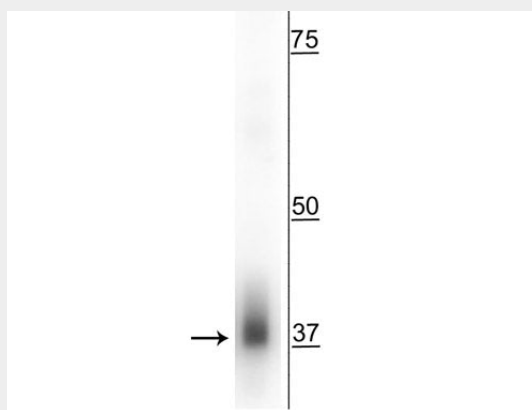
Blue Ice

Anti-Mitochondrial Fission Factor (Mff) Antibody - Protocols

Provided below are standard protocols that you may find useful for product applications.

- [Western Blot](#)
- [Blocking Peptides](#)
- [Dot Blot](#)
- [Immunohistochemistry](#)
- [Immunofluorescence](#)
- [Immunoprecipitation](#)
- [Flow Cytometry](#)
- [Cell Culture](#)

Anti-Mitochondrial Fission Factor (Mff) Antibody - Images



Western blot of mouse whole brain lysate showing specific immunolabeling of the ~38 kDa Mff protein.

Anti-Mitochondrial Fission Factor (Mff) Antibody - Background

Mitochondrial fission factor, also known as Mff, is a tail-anchored, outer mitochondrial membrane protein that is part of a complex process controlling mitochondrial and peroxisomal fission in conjunction with Drp1 and Fis1 (Schrader and Yoon, 2007). The rate of mitochondrial fission and fusion balance each other for cell growth and survival of mitochondria. Fission can be greatly accelerated when cytochrome c is released during apoptosis (Desagher and Martinou, 2000). Mff was identified as an important component of the process through siRNA transfected cells, isolating the protein in the P2 pellet and demonstrating that Mff is exposed to the cytosol (Gandre-Babbe and van der Bliek 2008). Mff has been identified at different stages of the fission process working alongside, rather than in complex with, Fis1 suggesting that Mff contributes to fission independent of the Fis1 complex (Gandre-Babbe and van der Bliek 2008).