

Anti-Mnk2a Antibody

Our Anti-Mnk2a rabbit polyclonal primary antibody from PhosphoSolutions is produced in-house. It det
Catalog # AN1457

Specification

Anti-Mnk2a Antibody - Product Information

Primary Accession	O9HBH9
Host	Rabbit
Clonality	Polyclonal
Isotype	IgG
Calculated MW	51875

Anti-Mnk2a Antibody - Additional Information

Gene ID **2872**

Other Names

ADCAD1 antibody, MADS box transcription enhancer factor 2 polypeptide A (myocyte enhancer factor 2A) antibody, MEF2 antibody, MEF2A antibody, MEF2A_HUMAN antibody, Myocyte enhancer factor 2A antibody, Myocyte-specific enhancer factor 2A antibody, RSRFC4 antibody, RSRFC9 antibody, Serum response factor like protein 1 antibody, Serum response factor-like protein 1 antibody

Target/Specificity

MAP kinase-interacting kinases Mnk1 and Mnk2 are activated by the MAP kinases, ERK and p38 (Waskiewicz et al., 1997). Additionally, Mnk1 and Mnk2 have been shown to phosphorylate the translation initiation factor eIF4E (Fukunaga and Hunter 1997; Waskiewicz et al., 1997). Alternative splicing of the MKNK2 gene results in two isoforms with different C-termini: one that has a MAPK-binding domain, Mnk2a, and one that does not, Mnk2b (Parra et al., 2005). Recent studies have indicated that Mnk2a has tumor suppressive activity while Mnk2b is pro-oncogenic (Maimon et al., 2014).

Format

Antigen Affinity Purified from Pooled Serum

Storage

Maintain refrigerated at 2-8°C for up to 6 months. For long term storage store at -20°C in small aliquots to prevent freeze-thaw cycles.

Precautions

Anti-Mnk2a Antibody is for research use only and not for use in diagnostic or therapeutic procedures.

Shipping

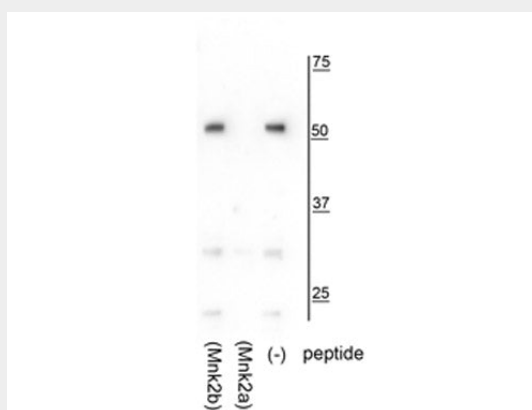
Blue Ice

Anti-Mnk2a Antibody - Protocols

Provided below are standard protocols that you may find useful for product applications.

- [Western Blot](#)
- [Blocking Peptides](#)
- [Dot Blot](#)
- [Immunohistochemistry](#)
- [Immunofluorescence](#)
- [Immunoprecipitation](#)
- [Flow Cytometry](#)
- [Cell Culture](#)

Anti-Mnk2a Antibody - Images



Western blot of HeLa lysate showing specific immunolabeling of the ~52 kDa Mnk2a isoform in the third lane (-). Specificity is shown in the second lane (Mnk2a) where immunolabeling is blocked by preadsorption of the Mnk2a peptide used as the antigen, but not by the Mnk2b peptide in the first lane.

Anti-Mnk2a Antibody - Background

MAP kinase-interacting kinases Mnk1 and Mnk2 are activated by the MAP kinases, ERK and p38 (Waskiewicz et al., 1997). Additionally, Mnk1 and Mnk2 have been shown to phosphorylate the translation initiation factor eIF4E (Fukunaga and Hunter 1997; Waskiewicz et al., 1997). Alternative splicing of the MKNK2 gene results in two isoforms with different C-termini: one that has a MAPK-binding domain, Mnk2a, and one that does not, Mnk2b (Parra et al., 2005). Recent studies have indicated that Mnk2a has tumor suppressive activity while Mnk2b is pro-oncogenic (Maimon et al., 2014).