

Anti-Mnk2b Antibody

Our Anti-Mnk2b rabbit polyclonal primary antibody from PhosphoSolutions is produced in-house. It det
Catalog # AN1458

Specification

Anti-Mnk2b Antibody - Product Information

Primary Accession	O9HBH9
Host	Rabbit
Clonality	Polyclonal
Isotype	IgG
Calculated MW	51875

Anti-Mnk2b Antibody - Additional Information

Gene ID **2872**

Other Names

MADS box transcription enhancer factor 2 antibody, MDS1 EVI1 antibody, Mef2b antibody, MEF2B_HUMAN antibody, Myocyte enhancer factor 2B antibody, Myocyte specific enhancer factor 2B antibody, Myocyte-specific enhancer factor 2B antibody, PRDM3 antibody, RSRFR2 antibody, Serum response factor like protein 2 antibody, Serum response factor-like protein 2 antibody, XMEF2 antibody

Target/Specificity

MAP kinase-interacting kinases Mnk1 and Mnk2, are activated by the MAP kinases, ERK and p38 (Waskiewicz et al., 1997). Additionally, Mnk1 and Mnk2 have been shown to phosphorylate the translation initiation factor eIF4E (Fukunaga and Hunter 1997; Waskiewicz et al., 1997). Alternative splicing of the MKNK2 gene results in two isoforms with different C-termini: one that has a MAPK-binding domain, Mnk2a, and one that does not, Mnk2b (Parra et al., 2005). Recent studies have indicated that Mnk2a has tumor suppressive activity while Mnk2b is pro-oncogenic (Maimon et al., 2014).

Format

Antigen Affinity Purified from Pooled Serum

Storage

Maintain refrigerated at 2-8°C for up to 6 months. For long term storage store at -20°C in small aliquots to prevent freeze-thaw cycles.

Precautions

Anti-Mnk2b Antibody is for research use only and not for use in diagnostic or therapeutic procedures.

Shipping

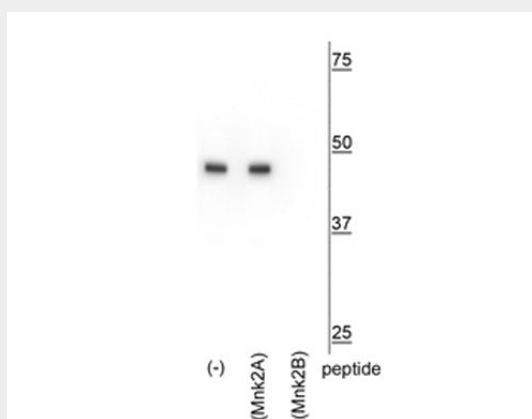
Blue Ice

Anti-Mnk2b Antibody - Protocols

Provided below are standard protocols that you may find useful for product applications.

- [Western Blot](#)
- [Blocking Peptides](#)
- [Dot Blot](#)
- [Immunohistochemistry](#)
- [Immunofluorescence](#)
- [Immunoprecipitation](#)
- [Flow Cytometry](#)
- [Cell Culture](#)

Anti-Mnk2b Antibody - Images



Western blot of HeLa lysate showing specific immunolabeling of the ~47 kDa Mnk2b isoform in the first lane (-). Specificity is shown in the third lane (Mnk2b) where immunolabeling is blocked by preadsorption of the Mnk2b peptide used as the antigen, but not by the Mnk2a peptide in the second lane.

Anti-Mnk2b Antibody - Background

MAP kinase-interacting kinases Mnk1 and Mnk2, are activated by the MAP kinases, ERK and p38 (Waskiewicz et al., 1997). Additionally, Mnk1 and Mnk2 have been shown to phosphorylate the translation initiation factor eIF4E (Fukunaga and Hunter 1997; Waskiewicz et al., 1997). Alternative splicing of the MKNK2 gene results in two isoforms with different C-termini: one that has a MAPK-binding domain, Mnk2a, and one that does not, Mnk2b (Parra et al., 2005). Recent studies have indicated that Mnk2a has tumor suppressive activity while Mnk2b is pro-oncogenic (Maimon et al., 2014).