

Anti-Neurofilament NF-H Antibody

Our Anti-Neurofilament NF-H primary antibody from PhosphoSolutions is mouse monoclonal. It detects a
Catalog # AN1464

Specification

Anti-Neurofilament NF-H Antibody - Product Information

Application	WB, IHC
Primary Accession	P12036
Host	Mouse
Clonality	Monoclonal
Isotype	IgG1
Calculated MW	111838

Anti-Neurofilament NF-H Antibody - Additional Information

Gene ID **4744**

Other Names

200 kDa neurofilament protein antibody, CMT2CC antibody, Nefh antibody, Neurofilament heavy polypeptide 200kDa antibody, Neurofilament heavy polypeptide antibody, Neurofilament triplet H protein antibody, NF H antibody, NF-H antibody, NFH antibody, NFH_HUMAN antibody

Target/Specificity

Neurofilaments are the 10nm or intermediate filament proteins found specifically in neurons, and are composed predominantly of three major proteins called NF-L, NF-M and NF-H (1). NF-H is the neurofilament high or heavy molecular weight polypeptide and runs on SDS-PAGE gels at 200-220 kDa, with some variability across species boundaries. Antibodies to NF-H are useful for identifying neuronal cells and their processes in tissue sections and in tissue culture. NF-H antibodies can also be useful to visualize neurofilament accumulations seen in many neurological diseases, such as Amyotrophic Lateral Sclerosis (Lou Gehrig's disease) (2) and Alzheimer's disease (3).

Dilution

WB~~1:1000
IHC~~1:100~500

Format

Protein G Purified

Storage

Maintain refrigerated at 2-8°C for up to 6 months. For long term storage store at -20°C in small aliquots to prevent freeze-thaw cycles.

Precautions

Anti-Neurofilament NF-H Antibody is for research use only and not for use in diagnostic or therapeutic procedures.

Shipping

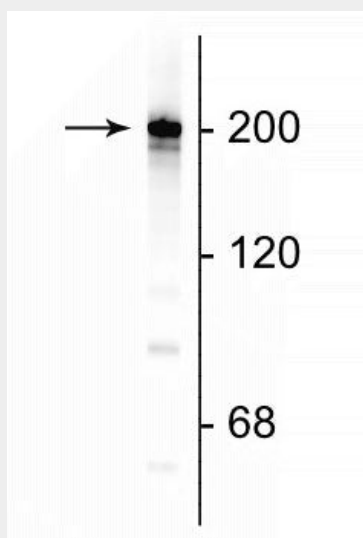
Blue Ice

Anti-Neurofilament NF-H Antibody - Protocols

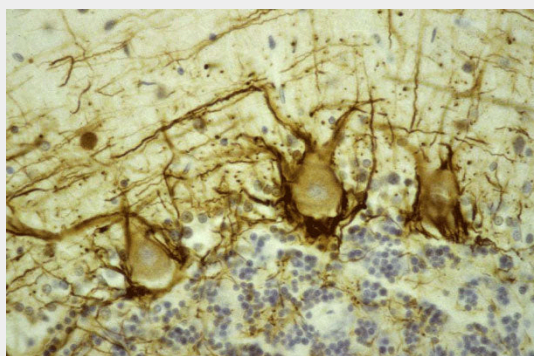
Provided below are standard protocols that you may find useful for product applications.

- [Western Blot](#)
- [Blocking Peptides](#)
- [Dot Blot](#)
- [Immunohistochemistry](#)
- [Immunofluorescence](#)
- [Immunoprecipitation](#)
- [Flow Cytometry](#)
- [Cell Culture](#)

Anti-Neurofilament NF-H Antibody - Images



Western blot of rat cortical lysate showing specific immunolabeling of the ~200 kDa NF-H protein.



Immunostaining of human cerebellar cortex showing labeling of NF-H (cat. 1450-NFH, DAB, 1:500) in basket cell axons surrounding the large Purkinje neurons. Cerebellar granule cell layer is at the bottom of the image and the molecular layer at the top. Section was counterstained with Hematoxylin.

Anti-Neurofilament NF-H Antibody - Background

Neurofilaments are the 10nm or intermediate filament proteins found specifically in neurons, and are composed predominantly of three major proteins called NF-L, NF-M and NF-H (1). NF-H is the neurofilament high or heavy molecular weight polypeptide and runs on SDS-PAGE gels at 200-220

kDa, with some variability across species boundaries. Antibodies to NF-H are useful for identifying neuronal cells and their processes in tissue sections and in tissue culture. NF-H antibodies can also be useful to visualize neurofilament accumulations seen in many neurological diseases, such as Amyotrophic Lateral Sclerosis (Lou Gehrig's disease) (2) and Alzheimer's disease (3).