

Anti-Neurofilament NF-L Antibody

Our Anti-Neurofilament NF-L primary antibody from PhosphoSolutions is chicken polyclonal. It detects
Catalog # AN1467

Specification

Anti-Neurofilament NF-L Antibody - Product Information

Application	WB, IHC
Primary Accession	P02548
Reactivity	Bovine, Chicken, Drosophila
Host	Chicken
Clonality	Polyclonal
Isotype	IgY
Calculated MW	62646

Anti-Neurofilament NF-L Antibody - Additional Information

Gene ID **281348**

Other Names

68 kDa neurofilament protein antibody, 68kDa Neurofilament antibody, 68kDa neurofilament protein antibody, CMT1F antibody, CMT2E antibody, FLJ53642 antibody, Light molecular weight neurofilament protein antibody, NEFL antibody, Neurofilament light antibody, Neurofilament light polypeptide 68kDa antibody, Neurofilament light polypeptide antibody, Neurofilament protein, light chain antibody, Neurofilament subunit NF L antibody, Neurofilament triplet L protein antibody, NF-L antibody, NF68 antibody, NFL antibody, NFL_HUMAN antibody

Target/Specificity

Neurofilaments are the 10nm or intermediate filament proteins found specifically in neurons, and are composed predominantly of three major proteins called NF-L, NF-M and NF-H (1). NF-L is the neurofilament light or low molecular weight polypeptide and runs on SDS-PAGE gels at about 68kDa. Antibodies to NF-L are useful for identifying neuronal cells and their processes in tissue sections and in tissue culture. Mutations in the protein coding region of the human NF-L gene cause some forms of Charcot-Marie-Tooth disease (2).

Dilution

WB~~1:1000
IHC~~1:100~500

Format

Total IgY fraction

Storage

Maintain refrigerated at 2-8°C for up to 6 months. For long term storage store at -20°C in small aliquots to prevent freeze-thaw cycles.

Precautions

Anti-Neurofilament NF-L Antibody is for research use only and not for use in diagnostic or therapeutic procedures.

Shipping

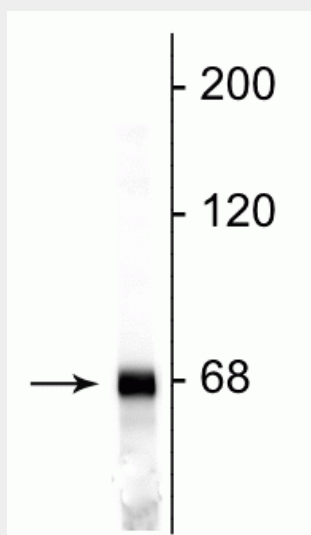
Blue Ice

Anti-Neurofilament NF-L Antibody - Protocols

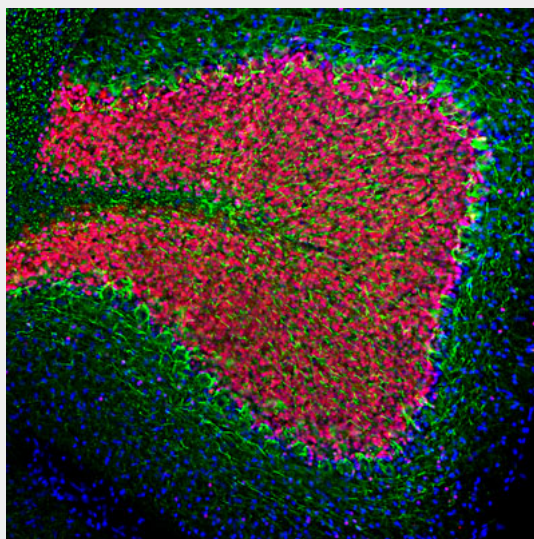
Provided below are standard protocols that you may find useful for product applications.

- [Western Blot](#)
- [Blocking Peptides](#)
- [Dot Blot](#)
- [Immunohistochemistry](#)
- [Immunofluorescence](#)
- [Immunoprecipitation](#)
- [Flow Cytometry](#)
- [Cell Culture](#)

Anti-Neurofilament NF-L Antibody - Images

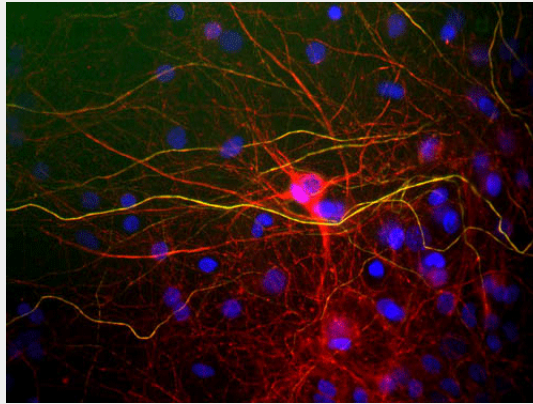


Western blot of rat cortical lysate showing specific immunolabeling of the ~68 kDa NF-L protein.



Immunofluorescence of a section of rat cerebellum showing specific labeling of Neurofilament-L

(cat. 1453-NFL, 1:2000, green) and labeling of FOX3/NeuN (cat. 583-FOX3, 1:5000, red). The anti-NFL strongly labels the axons of basket cells and perikarya and processes of neuronal cells. The anti-FOX3/NeuN labels the nuclei and proximal cytoplasm of neurons. The blue is DAPI staining of nuclear DNA.



Immunostaining of mixed cultured rat neurons and glia stained with anti-NFL antibody (cat. 1453-NFL, red, 1:5000). The NF-L protein is assembled into neurofilaments which are found throughout the axons, dendrites, and perikarya as shown above.

Anti-Neurofilament NF-L Antibody - Background

Neurofilaments are the 10nm or intermediate filament proteins found specifically in neurons, and are composed predominantly of three major proteins called NF-L, NF-M and NF-H (1). NF-L is the neurofilament light or low molecular weight polypeptide and runs on SDS-PAGE gels at about 68kDa. Antibodies to NF-L are useful for identifying neuronal cells and their processes in tissue sections and in tissue culture. Mutations in the protein coding region of the human NF-L gene cause some forms of Charcot-Marie-Tooth disease (2).