

Anti-NG2/CSPG4 Antibody

Our NG2/CSPG4 rabbit polyclonal primary antibody from PhosphoSolutions is produced in-house. It detects
Catalog # AN1471

Specification**Anti-NG2/CSPG4 Antibody - Product Information**

Application	WB
Primary Accession	Q6UVK1
Reactivity	Bovine
Host	Rabbit
Clonality	Polyclonal
Isotype	IgG
Calculated MW	250537

Anti-NG2/CSPG4 Antibody - Additional Information

Gene ID **1464**

Other Names

4732461B14Rik antibody, AN2 antibody, AN2 proteoglycan antibody, Chondroitin sulfate proteoglycan 4 (melanoma-associated) antibody, Chondroitin sulfate proteoglycan 4 antibody, Chondroitin sulfate proteoglycan NG2 antibody, Cspg4 antibody, Cspg4 chondroitin sulfate proteoglycan 4 antibody, CSPG4_HUMAN antibody, HMW-MAA antibody, HSN tumor-specific antigen antibody, Kiaa4232 antibody, MCSP antibody, MCSPG antibody, MEL-CSPG antibody, Melanoma chondroitin sulfate proteoglycan antibody, Melanoma-associated chondroitin sulfate proteoglycan antibody, MELCSPG antibody, MSK16 antibody, NG2 antibody

Target/Specificity

Neuron-glia antigen 2 (NG2) is a chondroitin sulfate proteoglycan that is encoded by the CSPG4 gene in humans. It is an excellent oligodendrocyte marker. NG2 is a hallmark protein of oligodendrocyte progenitor cells (OPCs) and has been linked with familial schizophrenia (de Vrij, F.M., et al, 2018). NG2 also plays a role in stabilizing cell-substratum interactions during early events of melanoma cell spreading on endothelial basement membranes. It represents an integral membrane chondroitin sulfate proteoglycan expressed by human malignant melanoma cells (Luo, W., et al, 2006). NG2 localizes at the apical plasma membrane and relocates to the lamellipodia of astrocytoma upon PRKCA phosphorylation.

Dilution

WB ~ 1:1000

Format

Antigen Affinity Purified from Pooled Serum

Storage

Maintain refrigerated at 2-8°C for up to 6 months. For long term storage store at -20°C in small aliquots to prevent freeze-thaw cycles.

Precautions

Anti-NG2/CSPG4 Antibody is for research use only and not for use in diagnostic or therapeutic procedures.

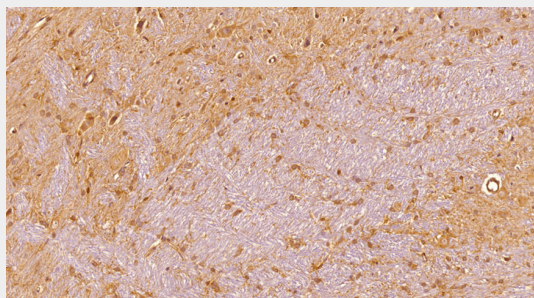
Shipping
Blue Ice

Anti-NG2/CSPG4 Antibody - Protocols

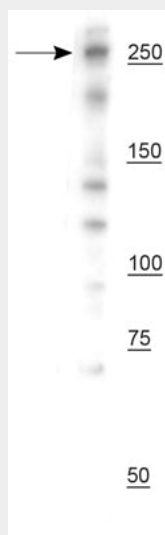
Provided below are standard protocols that you may find useful for product applications.

- [Western Blot](#)
- [Blocking Peptides](#)
- [Dot Blot](#)
- [Immunohistochemistry](#)
- [Immunofluorescence](#)
- [Immunoprecipitation](#)
- [Flow Cytometry](#)
- [Cell Culture](#)

Anti-NG2/CSPG4 Antibody - Images



Immunostaining of a sagittal section of FFPE rat brain showing strong staining of oligodendrocyte precursor cells (OPC) in the hippocampus using our anti-NG2/CSPG4 (DAB, 1:200) and detected with anti-rabbit HRP. The section is counterstained with hematoxylin to identify DNA (blue).



Western blot of mouse whole brain lysate showing specific immunolabeling of the ~250 kDa CSPG4/NG2 protein.

Anti-NG2/CSPG4 Antibody - Background

Neuron-gial antigen 2 (NG2) is a chondroitin sulfate proteoglycan that is encoded by the CSPG4

gene in humans. It is an excellent oligodendrocyte marker. NG2 is a hallmark protein of oligodendrocyte progenitor cells (OPCs) and has been linked with familial schizophrenia (de Vrij, F.M., et al, 2018). NG2 also plays a role in stabilizing cell-substratum interactions during early events of melanoma cell spreading on endothelial basement membranes. It represents an integral membrane chondroitin sulfate proteoglycan expressed by human malignant melanoma cells (Luo, W., et al, 2006). NG2 localizes at the apical plasma membrane and relocates to the lamellipodia of astrocytoma upon PRKCA phosphorylation.