

Anti-Nuclei Antibody

Our Anti-Nuclei primary antibody from PhosphoSolutions is mouse monoclonal. It detects human Nuclei
Catalog # AN1497

Specification

Anti-Nuclei Antibody - Product Information

| | |
|-------------|-------------------|
| Application | WB |
| Host | Mouse |
| Clonality | Monoclonal |
| Isotype | IgG1 |

Anti-Nuclei Antibody - Additional Information**Other Names**

HNA antibody, Human Nuclear Antigen antibody, HuNu antibody

Target/Specificity

This antibody is an excellent marker for human cells in xenographic model research. It reacts specifically with human cells, including neurons and embryonic stem cells, with no reactivity to rat or mouse cells.

Dilution

WB~~1:1000

Format

Concentrated tissue culture supernatant

Storage

Maintain refrigerated at 2-8°C for up to 6 months. For long term storage store at -20°C in small aliquots to prevent freeze-thaw cycles.

Precautions

Anti-Nuclei Antibody is for research use only and not for use in diagnostic or therapeutic procedures.

Shipping

Blue Ice

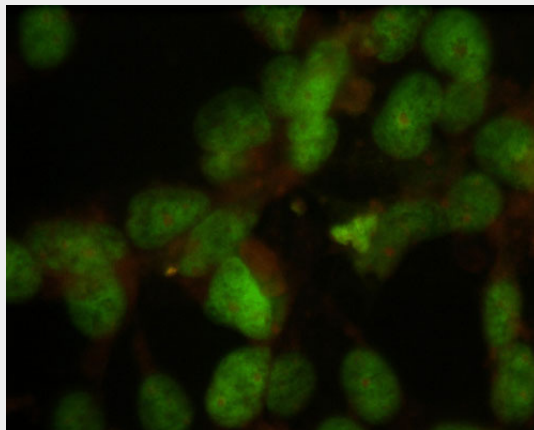
Anti-Nuclei Antibody - Protocols

Provided below are standard protocols that you may find useful for product applications.

- [Western Blot](#)
- [Blocking Peptides](#)
- [Dot Blot](#)
- [Immunohistochemistry](#)
- [Immunofluorescence](#)

- [Immunoprecipitation](#)
- [Flow Cytometry](#)
- [Cell Culture](#)

Anti-Nuclei Antibody - Images



Immunostaining of HeLa cells showing specific labeling of nuclei using the anti-nuclei antibody (cat. 1590-NUC, 1:100, green).

Anti-Nuclei Antibody - Background

This antibody is an excellent marker for human cells in xenographic model research. It reacts specifically with human cells, including neurons and embryonic stem cells, with no reactivity to rat or mouse cells.