

**Anti-NSF (N-ethylmaleimide sensitive fusion protein) Antibody**

**Our Anti-NSF (N-ethylmaleimide sensitive fusion protein) rabbit polyclonal primary antibody from Pho**  
**Catalog # AN1499**

**Specification**

---

**Anti-NSF (N-ethylmaleimide sensitive fusion protein) Antibody - Product Information**

Primary Accession	<a href="#">O9OUL6</a>
Reactivity	<b>Bovine</b>
Host	<b>Rabbit</b>
Clonality	<b>Polyclonal</b>
Isotype	<b>IgG</b>
Calculated MW	<b>82652</b>

**Anti-NSF (N-ethylmaleimide sensitive fusion protein) Antibody - Additional Information**

Gene ID **60355**

**Other Names**

N ethylmaleimide sensitive factor antibody, N ethylmaleimide sensitive factor like protein antibody, N ethylmaleimide sensitive fusion protein antibody, N-ethylmaleimide-sensitive fusion protein antibody, NEM sensitive fusion protein antibody, NEM-sensitive fusion protein antibody, NSF antibody, NSF\_HUMAN antibody, SKD 2 antibody, SKD2 antibody, Vesicle fusing ATPase antibody, Vesicle-fusing ATPase antibody, Vesicular fusion protein NSF antibody, Vesicular-fusion protein NSF antibody

**Target/Specificity**

NSF (N-ethylmaleimide sensitive fusion protein) is a critical component of the SNARE (soluble NSF attachment protein receptors) protein complex that is involved in synaptic vesicle trafficking. Specifically, NSF has been found to be essential in membrane fusion. Furthermore, NSF has been recently demonstrated to bind other protein complexes such as AMPA receptor subunits (GluR2), GATE-16, LMA-1 and Rabs suggesting a more diverse role in the assembly of various protein complexes (Whiteheart et al., 2004).

**Format**

Antigen Affinity Purified from Pooled Serum

**Storage**

Maintain refrigerated at 2-8°C for up to 6 months. For long term storage store at -20°C in small aliquots to prevent freeze-thaw cycles.

**Precautions**

Anti-NSF (N-ethylmaleimide sensitive fusion protein) Antibody is for research use only and not for use in diagnostic or therapeutic procedures.

**Shipping**

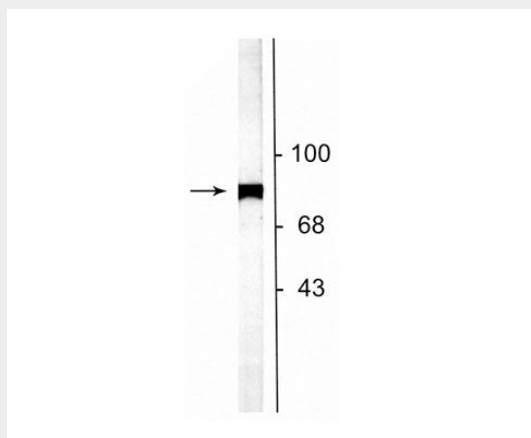
Blue Ice

**Anti-NSF (N-ethylmaleimide sensitive fusion protein) Antibody - Protocols**

Provided below are standard protocols that you may find useful for product applications.

- [Western Blot](#)
- [Blocking Peptides](#)
- [Dot Blot](#)
- [Immunohistochemistry](#)
- [Immunofluorescence](#)
- [Immunoprecipitation](#)
- [Flow Cytometry](#)
- [Cell Culture](#)

#### **Anti-NSF (N-ethylmaleimide sensitive fusion protein) Antibody - Images**



Western blot of rat striatal lysate showing specific labeling of the ~75 kDa NSF protein.

#### **Anti-NSF (N-ethylmaleimide sensitive fusion protein) Antibody - Background**

NSF (N-ethylmaleimide sensitive fusion protein) is a critical component of the SNARE (soluble NSF attachment protein receptors) protein complex that is involved in synaptic vesicle trafficking. Specifically, NSF has been found to be essential in membrane fusion. Furthermore, NSF has been recently demonstrated to bind other protein complexes such as AMPA receptor subunits (GluR2), GATE-16, LMA-1 and Rabs suggesting a more diverse role in the assembly of various protein complexes (Whiteheart et al., 2004).