

Anti-Olig1 Antibody

**Our Anti-Olig1 primary antibody from PhosphoSolutions is rabbit polyclonal. It detects human, mouse,
Catalog # AN1500**

Specification

Anti-Olig1 Antibody - Product Information

Application	WB, IHC, IF
Primary Accession	O9JKN5
Reactivity	Bovine
Host	Rabbit
Clonality	Polyclonal
Isotype	IgG
Calculated MW	27141

Anti-Olig1 Antibody - Additional Information

Gene ID **50914**

Other Names

Basic domain helix loop helix protein class B 6 antibody, Basic domain helix loop helix protein class B6 antibody, BHLH B6 antibody, BHLHB 6 antibody, bHLHb6 antibody, bHLHe21 antibody, Class B basic helix-loop-helix protein 6 antibody, Class E basic helix-loop-helix protein 21 antibody, Olig 1 antibody, Olig1 antibody, OLIG1_HUMAN antibody, Oligo 1 antibody, Oligo1 antibody, Oligodendrocyte lineage transcription factor 1 antibody, Oligodendrocyte specific bHLH transcription factor 1 antibody, Oligodendrocyte transcription factor 1 antibody

Target/Specificity

Olig genes have been identified as the earliest known markers of oligodendrocyte lineage determination to date (Zhou et al., 2000). Olig1 is a transcription factor which promotes formation and maturation of oligodendrocytes, especially within the brain. It is expressed in the ventral spinal cord as early as 9.5 dpc and by 15.5 dpc, olig1 is dispersed throughout the gray matter. In the postnatal brain, it is present preferentially in the white matter, such as corpus callosum and cerebellar medulla. Olig1 has been demonstrated as necessary in the repair of brain lesions in patients with multiple sclerosis (Arnett et al. 2004).

Dilution

WB~~1:1000
IHC~~1:100~500
IF~~1:50~200

Format

Protein A purified

Storage

Maintain refrigerated at 2-8°C for up to 6 months. For long term storage store at -20°C in small aliquots to prevent freeze-thaw cycles.

Precautions

Anti-Olig1 Antibody is for research use only and not for use in diagnostic or therapeutic procedures.

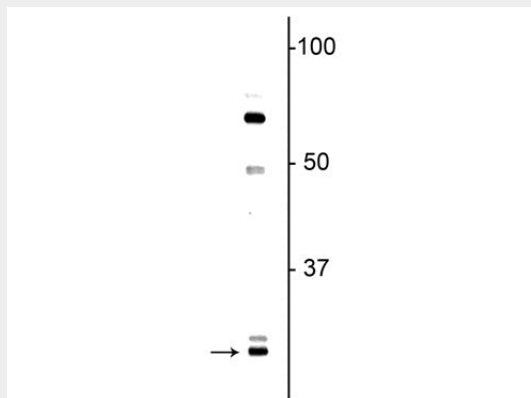
Shipping
Blue Ice

Anti-Olig1 Antibody - Protocols

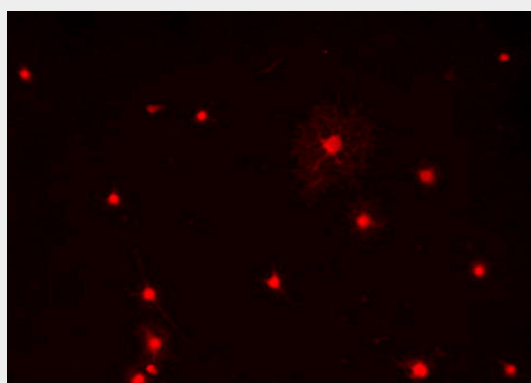
Provided below are standard protocols that you may find useful for product applications.

- [Western Blot](#)
- [Blocking Peptides](#)
- [Dot Blot](#)
- [Immunohistochemistry](#)
- [Immunofluorescence](#)
- [Immunoprecipitation](#)
- [Flow Cytometry](#)
- [Cell Culture](#)

Anti-Olig1 Antibody - Images



Western blot of neonatal rat brain lysate showing specific immunolabeling of the ~ 27 kDa Olig1 protein.



Immunostaining of primary rat oligodendrocytes using anti-Olig1 (cat. 1537-OLIG1, red, 1:100).

Anti-Olig1 Antibody - Background

Olig genes have been identified as the earliest known markers of oligodendrocyte lineage determination to date (Zhou et al., 2000). Olig1 is a transcription factor which promotes formation and maturation of oligodendrocytes, especially within the brain. It is expressed in the ventral spinal cord as early as 9.5 dpc and by 15.5 dpc, olig1 is dispersed throughout the gray matter. In the

postnatal brain, it is present preferentially in the white matter, such as corpus callosum and cerebellar medulla. Olig1 has been demonstrated as necessary in the repair of brain lesions in patients with multiple sclerosis (Arnett et al. 2004).