

**Anti-Park7 (DJ-1) Antibody**

**Our Anti-Park7 (DJ-1) primary antibody from PhosphoSolutions is mouse monoclonal. It detects bovine,  
Catalog # AN1510**

**Specification**

---

**Anti-Park7 (DJ-1) Antibody - Product Information**

Application	WB, IHC
Primary Accession	<a href="#">O88767</a>
Reactivity	Bovine, Chicken
Host	Mouse
Clonality	Monoclonal
Isotype	IgG1
Calculated MW	19974

**Anti-Park7 (DJ-1) Antibody - Additional Information**

Gene ID **117287**

**Other Names**

CAP1 antibody, DJ-1 antibody, DJ1 antibody, DJ1 protein antibody, Epididymis secretory sperm binding protein Li 67p antibody, FLJ27376 antibody, FLJ34360 antibody, FLJ92274 antibody, HEL S 67p antibody, Oncogene DJ1 antibody, OTTHUMP00000001348 antibody, OTTHUMP00000001349 antibody, OTTHUMP00000001350 antibody, OTTHUMP00000001351 antibody, PARK7 antibody, PARK7\_HUMAN antibody, Parkinson disease (autosomal recessive, early onset) 7 antibody, Parkinson disease protein 7 antibody, Parkinson protein 7 antibody, Protein DJ-1 antibody, SP22 antibody

**Target/Specificity**

Park7, also known as DJ-1, is a member of the peptidase C56 family of proteins and is thought to function as a molecular chaperone. Mutations in park7 have been associated with autosomal recessive, early onset Parkinson's disease (Bonifati et al., 2003). Recently, park7 has been shown to inhibit microtubule associated protein 1B aggregation thus leading to neuronal apoptosis (Wang et al., 2011).

**Dilution**

WB~~1:1000  
IHC~~1:100~500

**Format**

Protein G purified culture supernatant

**Storage**

Maintain refrigerated at 2-8°C for up to 6 months. For long term storage store at -20°C in small aliquots to prevent freeze-thaw cycles.

**Precautions**

Anti-Park7 (DJ-1) Antibody is for research use only and not for use in diagnostic or therapeutic procedures.

**Shipping**

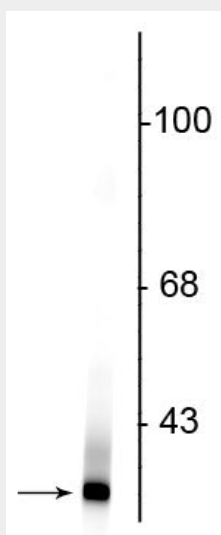
Blue Ice

### Anti-Park7 (DJ-1) Antibody - Protocols

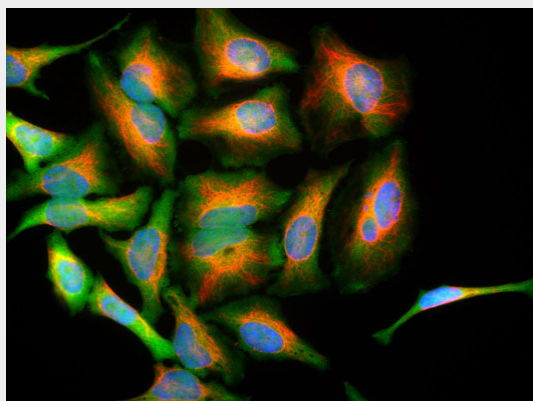
Provided below are standard protocols that you may find useful for product applications.

- [Western Blot](#)
- [Blocking Peptides](#)
- [Dot Blot](#)
- [Immunohistochemistry](#)
- [Immunofluorescence](#)
- [Immunoprecipitation](#)
- [Flow Cytometry](#)
- [Cell Culture](#)

### Anti-Park7 (DJ-1) Antibody - Images



Western blot of rat kidney lysate showing specific immunolabeling of the ~21 kDa Park7 protein.



Immunofluorescence of HeLa cells stained with Anti-Park7 (cat. 1597-PARK, green, 1:1000) showing strong cytoplasmic staining and Anti-Vimentin (cat. 2105-VIM, red, 1:10,000) labeling cytoplasmic intermediate filaments. The blue is nuclear staining.

### Anti-Park7 (DJ-1) Antibody - Background

Park7, also known as DJ-1, is a member of the peptidase C56 family of proteins and is thought to function as a molecular chaperone. Mutations in park7 have been associated with autosomal recessive, early onset Parkinson's disease (Bonifati et al., 2003). Recently, park7 has been shown to inhibit microtubule associated protein 1B aggregation thus leading to neuronal apoptosis (Wang et al., 2011).