

**Anti-Parkin (Ser378) Antibody**

**Our Anti-Parkin (Ser378) rabbit polyclonal phosphospecific primary antibody from PhosphoSolutions is  
Catalog # AN1512**

**Specification**

---

**Anti-Parkin (Ser378) Antibody - Product Information**

Primary Accession	<a href="#">O60260</a>
Host	<b>Rabbit</b>
Clonality	<b>Polyclonal</b>
Isotype	<b>IgG</b>
Calculated MW	<b>51641</b>

**Anti-Parkin (Ser378) Antibody - Additional Information**

Gene ID **5071**

**Other Names**

AR JP antibody, E3 ubiquitin ligase antibody, E3 ubiquitin protein ligase parkin antibody, E3 ubiquitin-protein ligase parkin antibody, FRA6E antibody, LPRS 2 antibody, LPRS2 antibody, PARK 2 antibody, Park2 antibody, Parkin 2 antibody, Parkinson disease (autosomal recessive juvenile) 2 antibody, Parkinson disease (autosomal recessive juvenile) 2 parkin antibody, Parkinson disease protein 2 antibody, Parkinson juvenile disease protein 2 antibody, Parkinson protein 2 E3 ubiquitin protein ligase antibody, Parkinson protein 2 E3 ubiquitin protein ligase (parkin) antibody, PDJ antibody, PRKN 2 antibody, PRKN antibody, PRKN2 antibody, PRKN2\_HUMAN antibody, Ubiquitin E3 ligase PRKN antibody

**Target/Specificity**

Parkin is an E3 ligase in the ubiquitin-proteasome system. Hereditary Parkinson's disease is most commonly caused by mutations in the parkin gene and is characterized by the progressive loss of dopaminergic neurons and the presence of Lewy bodies in the substantia nigra (Jenner et al., 1992). Recent evidence suggests that phosphorylation of parkin at Ser-378 may have an important regulatory role on its E3 ubiquitin ligase activity (Yamamoto et al., 2005).

**Format**

Antigen Affinity Purified from Pooled Serum

**Storage**

Maintain refrigerated at 2-8°C for up to 6 months. For long term storage store at -20°C in small aliquots to prevent freeze-thaw cycles.

**Precautions**

Anti-Parkin (Ser378) Antibody is for research use only and not for use in diagnostic or therapeutic procedures.

**Shipping**

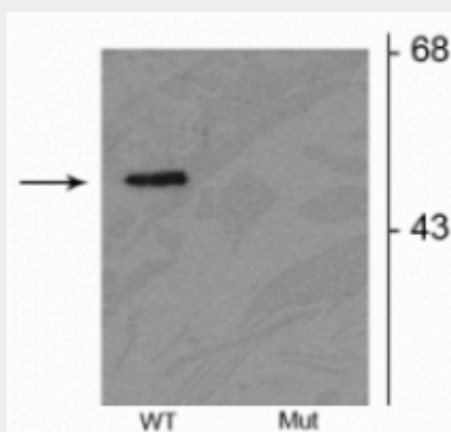
Blue Ice

**Anti-Parkin (Ser378) Antibody - Protocols**

Provided below are standard protocols that you may find useful for product applications.

- [Western Blot](#)
- [Blocking Peptides](#)
- [Dot Blot](#)
- [Immunohistochemistry](#)
- [Immunofluorescence](#)
- [Immunoprecipitation](#)
- [Flow Cytometry](#)
- [Cell Culture](#)

#### **Anti-Parkin (Ser378) Antibody - Images**



Western blot of HEK293 cells transfected with Parkin wild type (WT) and Parkin S378 mutant (Mut) showing the specific immunolabeling of the ~52 kDa parkin protein phosphorylated at Ser378.

#### **Anti-Parkin (Ser378) Antibody - Background**

Parkin is an E3 ligase in the ubiquitin-proteasome system. Hereditary Parkinson's disease is most commonly caused by mutations in the parkin gene and is characterized by the progressive loss of dopaminergic neurons and the presence of Lewy bodies in the substantia nigra (Jenner et al., 1992). Recent evidence suggests that phosphorylation of parkin at Ser-378 may have an important regulatory role on its E3 ubiquitin ligase activity (Yamamoto et al., 2005).