

Anti-Polo-Like Kinase (Thr210) Antibody

Our Anti-Polo-Like Kinase (Thr210) rabbit polyclonal phosphospecific primary antibody from PhosphoSo
Catalog # AN1519

Specification

Anti-Polo-Like Kinase (Thr210) Antibody - Product Information

Primary Accession	P53350
Host	Rabbit
Clonality	Polyclonal
Isotype	IgG
Calculated MW	68255

Anti-Polo-Like Kinase (Thr210) Antibody - Additional Information

Gene ID **5347**

Other Names

Cell cycle regulated protein kinase antibody, PLK 1 antibody, PLK antibody, PLK-1 antibody, plk1 antibody, PLK1_HUMAN antibody, Polo like kinase 1 antibody, Polo-like kinase 1 antibody, Serine/threonine protein kinase 13 antibody, Serine/threonine protein kinase PLK1 antibody, Serine/threonine-protein kinase 13 antibody, Serine/threonine-protein kinase PLK1 antibody, STPK 13 antibody, STPK13 antibody

Target/Specificity

Polo-like kinases are important regulators of cell cycle progression. PLK1 is a highly conserved Ser/Thr kinase that has essential roles in the formation of mitotic bipolar spindles (van Vugt et al., 2004). Deregulated expression of PLK's is detected in many types of cancer and associated with oncogenesis (Takei et al., 2005). It has been proposed that PLK1 function is altered at different stages of mitosis through consecutive phosphorylation events at Ser-137 and Thr-210 (van de Weerd et al., 2005).

Format

Antigen Affinity Purified from Pooled Serum

Storage

Maintain refrigerated at 2-8°C for up to 6 months. For long term storage store at -20°C in small aliquots to prevent freeze-thaw cycles.

Precautions

Anti-Polo-Like Kinase (Thr210) Antibody is for research use only and not for use in diagnostic or therapeutic procedures.

Shipping

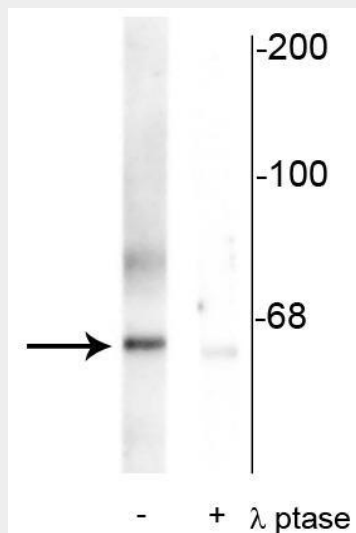
Blue Ice

Anti-Polo-Like Kinase (Thr210) Antibody - Protocols

Provided below are standard protocols that you may find useful for product applications.

- [Western Blot](#)
- [Blocking Peptides](#)
- [Dot Blot](#)
- [Immunohistochemistry](#)
- [Immunofluorescence](#)
- [Immunoprecipitation](#)
- [Flow Cytometry](#)
- [Cell Culture](#)

Anti-Polo-Like Kinase (Thr210) Antibody - Images



Western blot of rat synaptic membrane showing specific immunolabeling of the ~66 kDa PLK protein phosphorylated at Thr210 in the first lane (-). Phosphospecificity is shown in the second lane (+) where the immunolabeling is completely eliminated by blot treatment with lambda phosphatase (λ -Ptase, 1200 units for 30 minutes).

Anti-Polo-Like Kinase (Thr210) Antibody - Background

Polo-like kinases are important regulators of cell cycle progression. PLK1 is a highly conserved Ser/Thr kinase that has essential roles in the formation of mitotic bipolar spindles (van Vugt et al., 2004). Deregulated expression of PLK's is detected in many types of cancer and associated with oncogenesis (Takei et al., 2005). It has been proposed that PLK1 function is altered at different stages of mitosis through consecutive phosphorylation events at Ser-137 and Thr-210 (van de Weerd et al., 2005).