

Anti-PTPH1 (Ser459) Antibody

Our Anti-PTPH1 (Ser459) rabbit polyclonal phosphospecific primary antibody from PhosphoSolutions is
Catalog # AN1531

Specification

Anti-PTPH1 (Ser459) Antibody - Product Information

Primary Accession	P26045
Host	Rabbit
Clonality	Polyclonal
Isotype	IgG
Calculated MW	103990

Anti-PTPH1 (Ser459) Antibody - Additional Information

Gene ID **5774**

Other Names

cytoskeletal-associated protein tyrosine phosphatase antibody, protein tyrosine phosphatase H1 antibody, protein tyrosine phosphatase non-receptor type 3 antibody, Protein-tyrosine phosphatase H1 antibody, PTN3_HUMAN antibody, PTP-H1 antibody, PTPH1 antibody, PTPN3 antibody, Tyrosine-protein phosphatase non-receptor type 3 antibody

Target/Specificity

Protein-tyrosine Phosphatase H1 (PTPH1) has recently been identified as a specific p38 γ MAPK phosphatase which is mediated through PDZ interaction (Hou et al., 2010). Ras has been demonstrated to increase both p38 γ and PTPH1 protein expression, and there is a coupling of increased p38 γ and PTPH1 protein expression in primary colon cancer tissues (Hou et al., 2010). Phosphorylation of PTPH1 at Ser-459 leads to PTPH1 stabilization, which plays an important role in Ras oncogenesis and stress response (Hou et al., 2012). Additionally, phosphorylation of PTPH1 Ser-459 reveals a novel mechanism by which MAPK signals through PTPH1 to regulate cellular response (Hou et al., 2012).

Format

Antigen Affinity Purified from Pooled Serum

Storage

Maintain refrigerated at 2-8°C for up to 6 months. For long term storage store at -20°C in small aliquots to prevent freeze-thaw cycles.

Precautions

Anti-PTPH1 (Ser459) Antibody is for research use only and not for use in diagnostic or therapeutic procedures.

Shipping

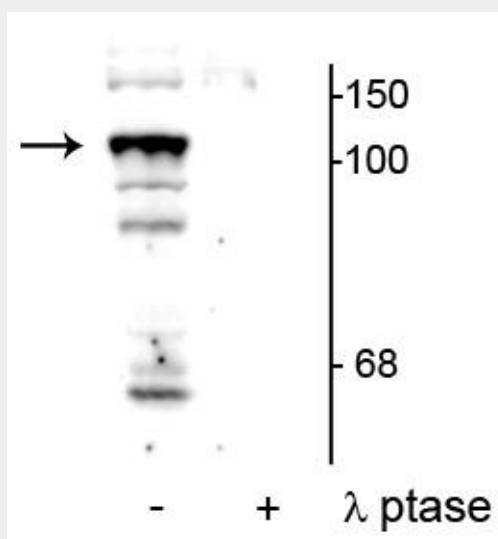
Blue Ice

Anti-PTPH1 (Ser459) Antibody - Protocols

Provided below are standard protocols that you may find useful for product applications.

- [Western Blot](#)
- [Blocking Peptides](#)
- [Dot Blot](#)
- [Immunohistochemistry](#)
- [Immunofluorescence](#)
- [Immunoprecipitation](#)
- [Flow Cytometry](#)
- [Cell Culture](#)

Anti-PTPH1 (Ser459) Antibody - Images



Western blot of mouse testicular lysate showing specific immunolabeling of the ~104 kDa PTPH1 phosphorylated at Ser459 in the first lane (-). Phosphospecificity is shown in the second lane (+) where the immunolabeling is completely eliminated by lysate treatment with lambda phosphatase (λ -Ptase, 400 units/100ul lysate for 30 minutes, RT).

Anti-PTPH1 (Ser459) Antibody - Background

Protein-tyrosine Phosphatase H1 (PTPH1) has recently been identified as a specific p38 γ MAPK phosphatase which is mediated through PDZ interaction (Hou et al., 2010). Ras has been demonstrated to increase both p38 γ and PTPH1 protein expression, and there is a coupling of increased p38 γ and PTPH1 protein expression in primary colon cancer tissues (Hou et al., 2010). Phosphorylation of PTPH1 at Ser-459 leads to PTPH1 stabilization, which plays an important role in Ras oncogenesis and stress response (Hou et al., 2012). Additionally, phosphorylation of PTPH1 Ser-459 reveals a novel mechanism by which MAPK signals through PTPH1 to regulate cellular response (Hou et al., 2012).