

Anti-Rab 3 Antibody

Our Anti-Rab 3 rabbit polyclonal primary antibody from PhosphoSolutions is produced in-house. It det
Catalog # AN1532

Specification

Anti-Rab 3 Antibody - Product Information

Primary Accession	P63012
Reactivity	Bovine
Host	Rabbit
Clonality	Polyclonal
Isotype	IgG
Calculated MW	24970

Anti-Rab 3 Antibody - Additional Information

Gene ID **25531**

Other Names

Rab 3A antibody, RAB 3A member RAS oncogene family antibody, Rab3a antibody, RAB3A member RAS oncogene family antibody, RAB3A_HUMAN antibody, RAS associated protein RAB 3A antibody, RAS associated protein RAB3A antibody, Ras related protein Rab 3A antibody, Ras related protein Rab3A antibody, Ras-related protein Rab-3A antibody

Target/Specificity

Rab proteins belong to the Ras small GTPase superfamily. The GTP-binding Rab3 subfamily has 4 known isoforms: 3A, 3B, 3C, and 3D (Schluter et al., 2004). These proteins are expressed in highest concentrations in brain and endocrine tissues and involved in regulated exocytosis of hormones and neurotransmitters (Coppola et al., 2002). Specifically, Rab3's are thought to play a key role in presynaptic vesicle trafficking and priming (Schluter et al., 2006).

Format

Antigen Affinity Purified from Pooled Serum

Storage

Maintain refrigerated at 2-8°C for up to 6 months. For long term storage store at -20°C in small aliquots to prevent freeze-thaw cycles.

Precautions

Anti-Rab 3 Antibody is for research use only and not for use in diagnostic or therapeutic procedures.

Shipping

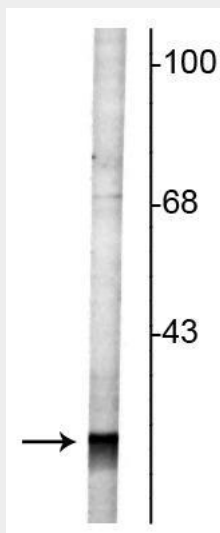
Blue Ice

Anti-Rab 3 Antibody - Protocols

Provided below are standard protocols that you may find useful for product applications.

- [Western Blot](#)
- [Blocking Peptides](#)
- [Dot Blot](#)
- [Immunohistochemistry](#)
- [Immunofluorescence](#)
- [Immunoprecipitation](#)
- [Flow Cytometry](#)
- [Cell Culture](#)

Anti-Rab 3 Antibody - Images



Western blot of rat cortical lysate showing specific labeling of the ~27 kDa Rab3 protein.

Anti-Rab 3 Antibody - Background

Rab proteins belong to the Ras small GTPase superfamily. The GTP-binding Rab3 subfamily has 4 known isoforms: 3A, 3B, 3C, and 3D (Schluter et al., 2004). These proteins are expressed in highest concentrations in brain and endocrine tissues and involved in regulated exocytosis of hormones and neurotransmitters (Coppola et al., 2002). Specifically, Rab3's are thought to play a key role in presynaptic vesicle trafficking and priming (Schluter et al., 2006).