

Anti-Rabphilin 3A Antibody

Our Anti-Rabphilin 3A rabbit polyclonal primary antibody from PhosphoSolutions is produced in-house.

Catalog # AN1533

Specification

Anti-Rabphilin 3A Antibody - Product Information

Primary Accession	P47709
Reactivity	Bovine
Host	Rabbit
Clonality	Polyclonal
Isotype	IgG
Calculated MW	75832

Anti-Rabphilin 3A Antibody - Additional Information

Gene ID **171039**

Other Names

Exophilin 1 antibody, Exophilin-1 antibody, Exophilin1 antibody, KIAA0985 antibody, Rabphilin 3A homolog antibody, Rabphilin-3A antibody, Rabphilin3A antibody, RP3A antibody, RP3A_HUMAN antibody, Rph 3a antibody, Rph3a antibody

Target/Specificity

Rabphilin-3A is a peripheral membrane protein that binds Ca^{2+} and phospholipids and is attached to synaptic vesicle membranes (Geppert et al., 1994; Li et al., 1994). The expression of rabphilin 3A is reduced in an animal model of Huntington's disease (Smith et al., 2005). Rabphilin can be phosphorylated at Ser-234 by both CAM kinase II and PKA and this phosphorylation has been suggested to regulate neuronal activity during development in a synapse-specific manner (Fykse et al., 1995; Foletti and Scheller, 2001).

Format

Antigen Affinity Purified from Pooled Serum

Storage

Maintain refrigerated at 2-8°C for up to 6 months. For long term storage store at -20°C in small aliquots to prevent freeze-thaw cycles.

Precautions

Anti-Rabphilin 3A Antibody is for research use only and not for use in diagnostic or therapeutic procedures.

Shipping

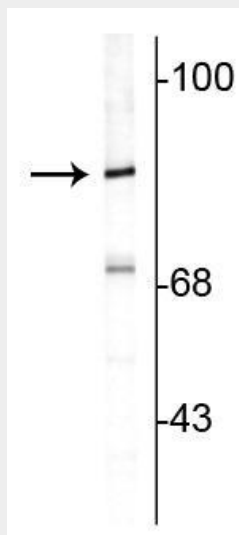
Blue Ice

Anti-Rabphilin 3A Antibody - Protocols

Provided below are standard protocols that you may find useful for product applications.

- [Western Blot](#)
- [Blocking Peptides](#)
- [Dot Blot](#)
- [Immunohistochemistry](#)
- [Immunofluorescence](#)
- [Immunoprecipitation](#)
- [Flow Cytometry](#)
- [Cell Culture](#)

Anti-Rabphilin 3A Antibody - Images



Western blot of rat cortical lysate showing specific immunolabeling of the ~82 kDa rabphilin 3A.

Anti-Rabphilin 3A Antibody - Background

Rabphilin-3A is a peripheral membrane protein that binds Ca^{2+} and phospholipids and is attached to synaptic vesicle membranes (Geppert et al., 1994; Li et al., 1994). The expression of rabphilin 3A is reduced in an animal model of Huntington's disease (Smith et al., 2005). Rabphilin can be phosphorylated at Ser-234 by both CAM kinase II and PKA and this phosphorylation has been suggested to regulate neuronal activity during development in a synapse-specific manner (Fykse et al., 1995; Foletti and Scheller, 2001).