

Anti-Rabphilin 3A (Ser234) Antibody

Our Anti-Rabphilin 3A (Ser234) rabbit polyclonal phosphospecific primary antibody from PhosphoSoluti
Catalog # AN1534

Specification

Anti-Rabphilin 3A (Ser234) Antibody - Product Information

Application	WB
Primary Accession	P47709
Reactivity	Bovine
Host	Rabbit
Clonality	Polyclonal
Isotype	IgG
Calculated MW	75832

Anti-Rabphilin 3A (Ser234) Antibody - Additional Information

Gene ID **171039**

Other Names

Exophilin 1 antibody, Exophilin-1 antibody, Exophilin1 antibody, KIAA0985 antibody, Rabphilin 3A homolog antibody, Rabphilin-3A antibody, Rabphilin3A antibody, RP3A antibody, RP3A_HUMAN antibody, Rph 3a antibody, Rph3a antibody

Target/Specificity

Rabphilin-3A is a peripheral membrane protein that binds Ca²⁺ and phospholipids and is attached to synaptic vesicle membranes (Geppert et al., 1994; Li et al., 1994). The expression of rabphilin 3A is reduced in an animal model of Huntington's disease (Smith et al., 2005). Rabphilin can be phosphorylated at Ser-234 by both CAM kinase II and PKA and this phosphorylation has been suggested to regulate neuronal activity during development in a synapse-specific manner (Fykse et al., 1995; Foletti and Scheller, 2001).

Dilution

WB~~1:1000

Format

Antigen Affinity Purified from Pooled Serum

Storage

Maintain refrigerated at 2-8°C for up to 6 months. For long term storage store at -20°C in small aliquots to prevent freeze-thaw cycles.

Precautions

Anti-Rabphilin 3A (Ser234) Antibody is for research use only and not for use in diagnostic or therapeutic procedures.

Shipping

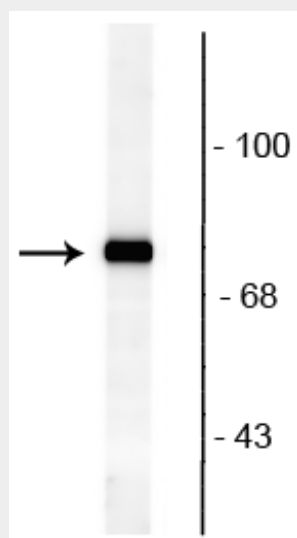
Blue Ice

Anti-Rabphilin 3A (Ser234) Antibody - Protocols

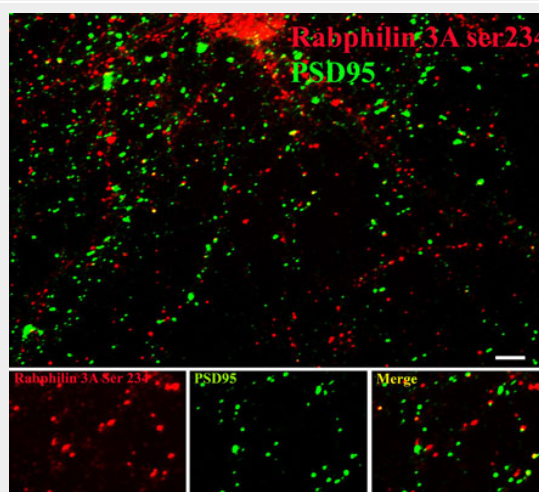
Provided below are standard protocols that you may find useful for product applications.

- [Western Blot](#)
- [Blocking Peptides](#)
- [Dot Blot](#)
- [Immunohistochemistry](#)
- [Immunofluorescence](#)
- [Immunoprecipitation](#)
- [Flow Cytometry](#)
- [Cell Culture](#)

Anti-Rabphilin 3A (Ser234) Antibody - Images



Western blot of rat brain lysate showing specific immunolabeling of the ~82 kDa rabphilin 3A phosphorylated at Ser234.



Immunostaining of 14 DIV rat cortical neurons labeling rabphilin when phosphorylated at Ser234 (cat. p1553-234, red, 1:400) and PSD95 (green). The rat cortical neurons were fixed with methanol at -20C for 10 minutes. Photo courtesy of Gang Liu.

Anti-Rabphilin 3A (Ser234) Antibody - Background

Rabphilin-3A is a peripheral membrane protein that binds Ca^{2+} and phospholipids and is attached to synaptic vesicle membranes (Geppert et al., 1994; Li et al., 1994). The expression of rabphilin 3A is reduced in an animal model of Huntington's disease (Smith et al., 2005). Rabphilin can be phosphorylated at Ser-234 by both CAM kinase II and PKA and this phosphorylation has been suggested to regulate neuronal activity during development in a synapse-specific manner (Fykse et al., 1995; Foletti and Scheller, 2001).