

Anti-RBPMS Antibody

**Our Anti-RBPMS primary antibody from PhosphoSolutions is rabbit polyclonal. It detects guinea pig, m
Catalog # AN1537**

Specification

Anti-RBPMS Antibody - Product Information

Application	WB, IHC
Primary Accession	Q9WVB0
Reactivity	Bovine, Chicken, Drosophila, C.Elegans, EBV, Neisseria Gonorrhoeae, Human, Hamster, Mouse, Pig, Monkey, Rat, Rabbit
Host	Rabbit
Clonality	Polyclonal
Isotype	IgG
Calculated MW	21816

Anti-RBPMS Antibody - Additional Information

Gene ID **19663**

Other Names

FLJ32971 antibody, Heart and RRM expressed sequence antibody, Hermes antibody, RBP MS antibody, RBP-MS antibody, Rbpms antibody, RBPMS_HUMAN antibody, RNA binding protein gene with multiple splicing antibody, RNA-binding protein with multiple splicing antibody

Target/Specificity

RBPMS (RNA binding protein with multiple splicing), also known as HERMES, contains one RRM (RNA recognition motif) domain and belongs to the RRM family of RNA-binding proteins. RBPMS exists as multiple alternatively spliced isoforms and is thought to bind RNA, possibly playing a role in RNA-related events, such as transcription and translation. RNA-binding proteins that are specific to retinal ganglion cells (RGCs) have been previously identified as excellent markers for RGCs (Kwong et al., 2010). Recent findings show that antibodies against RBPMS are robust reagents that exclusively identify RGCs in multiple mammalian species (Rodriguez et al. 2014)

Format

Antigen Affinity Purified

Storage

Maintain refrigerated at 2-8°C for up to 6 months. For long term storage store at -20°C in small aliquots to prevent freeze-thaw cycles.

Precautions

Anti-RBPMS Antibody is for research use only and not for use in diagnostic or therapeutic procedures.

Shipping

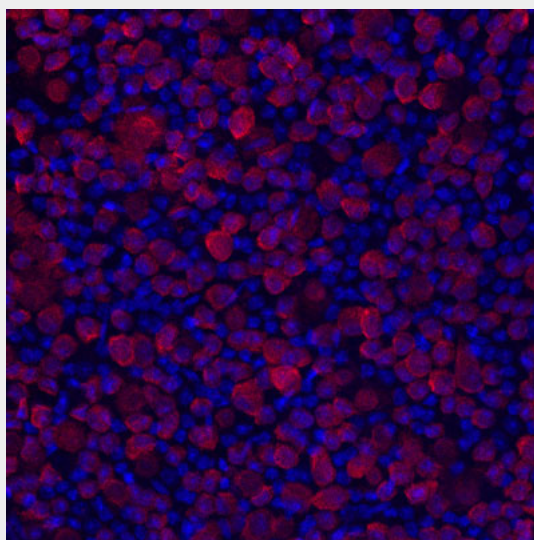
Blue Ice

Anti-RBPMS Antibody - Protocols

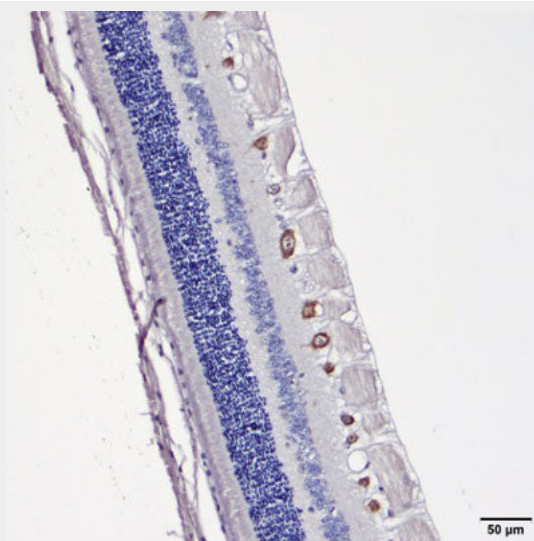
Provided below are standard protocols that you may find useful for product applications.

- [Western Blot](#)
- [Blocking Peptides](#)
- [Dot Blot](#)
- [Immunohistochemistry](#)
- [Immunofluorescence](#)
- [Immunoprecipitation](#)
- [Flow Cytometry](#)
- [Cell Culture](#)

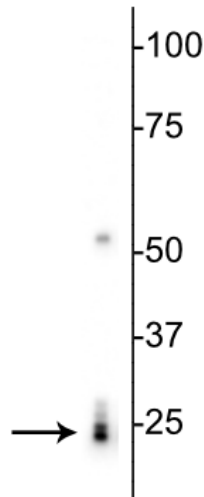
Anti-RBPMS Antibody - Images



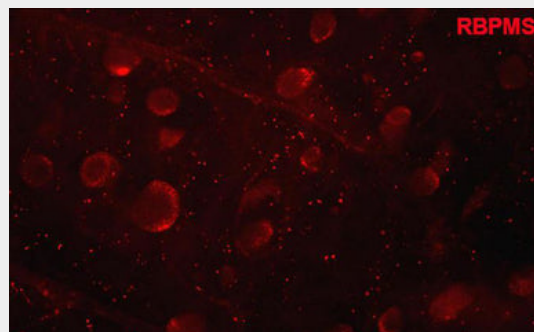
Immunostaining of mouse retinal ganglion cells showing specific immunolabeling of RBPMS (1:1000) in red. Photo courtesy of Allen Rodriguez, University of California, Los Angeles.



Immunostaining of cat retina showing specific immunolabeling of RBPMS. Photo courtesy of Emily Brinker, Auburn University.



Western blot of rat heart lysate showing specific labeling of the ~24 kDa RBPMS protein.



Whole mount whale retina labelled with RBPMS (red) to label RGCs. Image from publication CC-BY-4.0. PMID: 35185483

Anti-RBPMS Antibody - Background

RBPMS (RNA binding protein with multiple splicing), also known as HERMES, contains one RRM (RNA recognition motif) domain and belongs to the RRM family of RNA-binding proteins. RBPMS exists as multiple alternatively spliced isoforms and is thought to bind RNA, possibly playing a role in RNA-related events, such as transcription and translation. RNA-binding proteins that are specific to retinal ganglion cells (RGCs) have been previously identified as excellent markers for RGCs (Kwong et al., 2010). Recent findings show that antibodies against RBPMS are robust reagents that exclusively identify RGCs in multiple mammalian species (Rodriguez et al. 2014)