

Anti-Ribosomal S6 kinase 2 Antibody

Our Anti-Ribosomal S6 kinase 2 rabbit polyclonal primary antibody from PhosphoSolutions is produced
Catalog # AN1544

Specification

Anti-Ribosomal S6 kinase 2 Antibody - Product Information

Primary Accession	O9WUT3
Host	Rabbit
Clonality	Polyclonal
Isotype	IgG
Calculated MW	83157

Anti-Ribosomal S6 kinase 2 Antibody - Additional Information

Gene ID **20112**

Other Names

90 kDa ribosomal protein S6 kinase 2 antibody, HU 2 antibody, KS6A2_HUMAN antibody, MAP kinase activated protein kinase 1c antibody, MAP kinase-activated protein kinase 1c antibody, MAPK-activated protein kinase 1c antibody, MAPKAP kinase 1c antibody, MAPKAPK-1c antibody, MAPKAPK1C antibody, Mitogen.activated protein kinase-activated protein kinase 1C antibody, p90 RSK3 antibody, p90-RSK 2 antibody, p90RSK2 antibody, pp90RSK3 antibody, Ribosomal protein S6 kinase alpha-2 antibody, ribosomal protein S6 kinase 90kDa polypeptide 2 antibody, Ribosomal S6 kinase 3 antibody, RPS6KA2 antibody, RSK3 antibody, RSK 3 antibody, RSK antibody, RSK-3 antibody, S6K alpha antibody, S6K alpha 2 antibody, S6K-alpha-2 antibody

Target/Specificity

The p90 ribosomal S6 kinases (RSK)1–4 are downstream members of the extracellular signal-regulated kinase (ERK)/MAPK cascade. The loss of RSK2 activity in humans leads to Coffin–Lowry syndrome, which is characterized by mental retardation and growth deficits (Hanauer and Young, 2002). Recent work suggests that RSK2 exerts a tonic regulation on G-protein coupled signaling (Sheffler et al., 2006).

Format

Antigen Affinity Purified from Pooled Serum

Storage

Maintain refrigerated at 2-8°C for up to 6 months. For long term storage store at -20°C in small aliquots to prevent freeze-thaw cycles.

Precautions

Anti-Ribosomal S6 kinase 2 Antibody is for research use only and not for use in diagnostic or therapeutic procedures.

Shipping

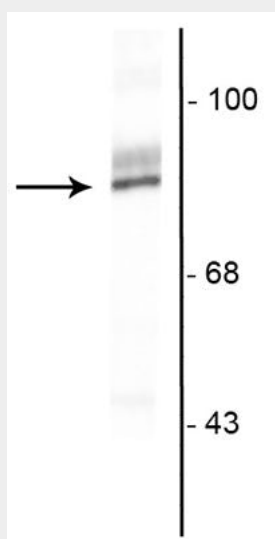
Blue Ice

Anti-Ribosomal S6 kinase 2 Antibody - Protocols

Provided below are standard protocols that you may find useful for product applications.

- [Western Blot](#)
- [Blocking Peptides](#)
- [Dot Blot](#)
- [Immunohistochemistry](#)
- [Immunofluorescence](#)
- [Immunoprecipitation](#)
- [Flow Cytometry](#)
- [Cell Culture](#)

Anti-Ribosomal S6 kinase 2 Antibody - Images



Western blot of HeLa cell lysate showing specific immunolabeling of the ~90 kDa RSK2 protein.

Anti-Ribosomal S6 kinase 2 Antibody - Background

The p90 ribosomal S6 kinases (RSK)1–4 are downstream members of the extracellular signal-regulated kinase (ERK)/MAPK cascade. The loss of RSK2 activity in humans leads to Coffin–Lowry syndrome, which is characterized by mental retardation and growth deficits (Hanauer and Young, 2002). Recent work suggests that RSK2 exerts a tonic regulation on G-protein coupled signaling (Sheffler et al., 2006).