

**Anti-SAP49 Antibody**

**Our Anti-SAP49 primary antibody from PhosphoSolutions is mouse monoclonal. It detects human, mouse, Catalog # AN1548**

**Specification**

---

**Anti-SAP49 Antibody - Product Information**

Application	WB, IHC
Primary Accession	<a href="#">Q15427</a>
Reactivity	Bovine
Host	Mouse
Clonality	Monoclonal
Isotype	IgG2b
Calculated MW	44386

**Anti-SAP49 Antibody - Additional Information**

Gene ID **10262**

**Other Names**

AFD1 antibody, Hsh49 antibody, MGC10828 antibody, Pre mRNA splicing factor SF3b 49 kDa subunit antibody, Pre-mRNA-splicing factor SF3b 49 kDa subunit antibody, SAP 49 antibody, SAP49 antibody, Sf3b4 antibody, SF3B4 antibody, SF3B4\_HUMAN antibody, SF3b49 antibody, SF3b50 antibody, Spliceosomal protein antibody, Spliceosome associated protein (U2 snRNP) antibody, Spliceosome associated protein 49 antibody, Spliceosome-associated protein 49 antibody, Splicing factor 3b subunit 4 49kDa antibody, Splicing factor 3B subunit 4 antibody

**Target/Specificity**

The spliceosome associated protein of ~49 kDa (SAP49), also known as SF3B4, is a widely expressed nuclear splicing factor that has been shown to have RNA binding activity as well as direct interaction with SAP145 (Champion-Arnaud and Reed 1994). The SAP145-SAP49 complex has recently been implicated in cell cycle progression as Vpr (viral protein 1 of HIV-1) has been shown to bind SAP145 thus interfering with the proper formation and functioning of the SAP145-SAP49 complex (Terada and Yasuda 2006).

**Format**

Protein G Purified

**Storage**

Maintain refrigerated at 2-8°C for up to 6 months. For long term storage store at -20°C in small aliquots to prevent freeze-thaw cycles.

**Precautions**

Anti-SAP49 Antibody is for research use only and not for use in diagnostic or therapeutic procedures.

**Shipping**

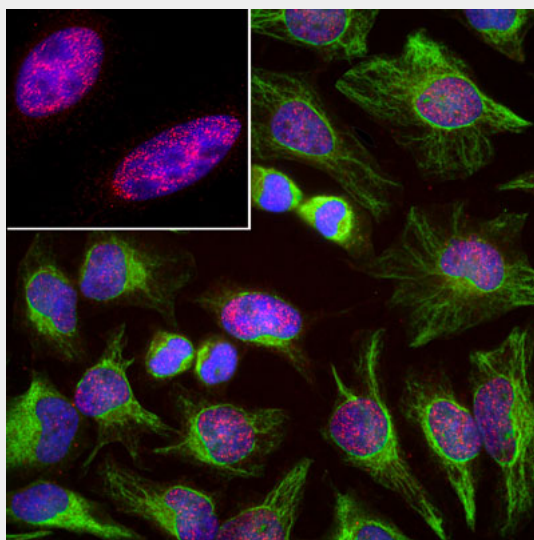
Blue Ice

## Anti-SAP49 Antibody - Protocols

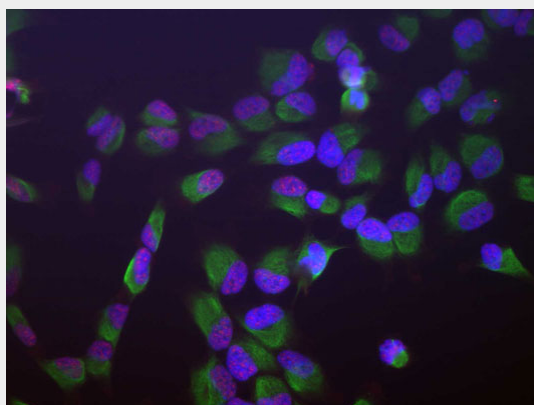
Provided below are standard protocols that you may find useful for product applications.

- [Western Blot](#)
- [Blocking Peptides](#)
- [Dot Blot](#)
- [Immunohistochemistry](#)
- [Immunofluorescence](#)
- [Immunoprecipitation](#)
- [Flow Cytometry](#)
- [Cell Culture](#)

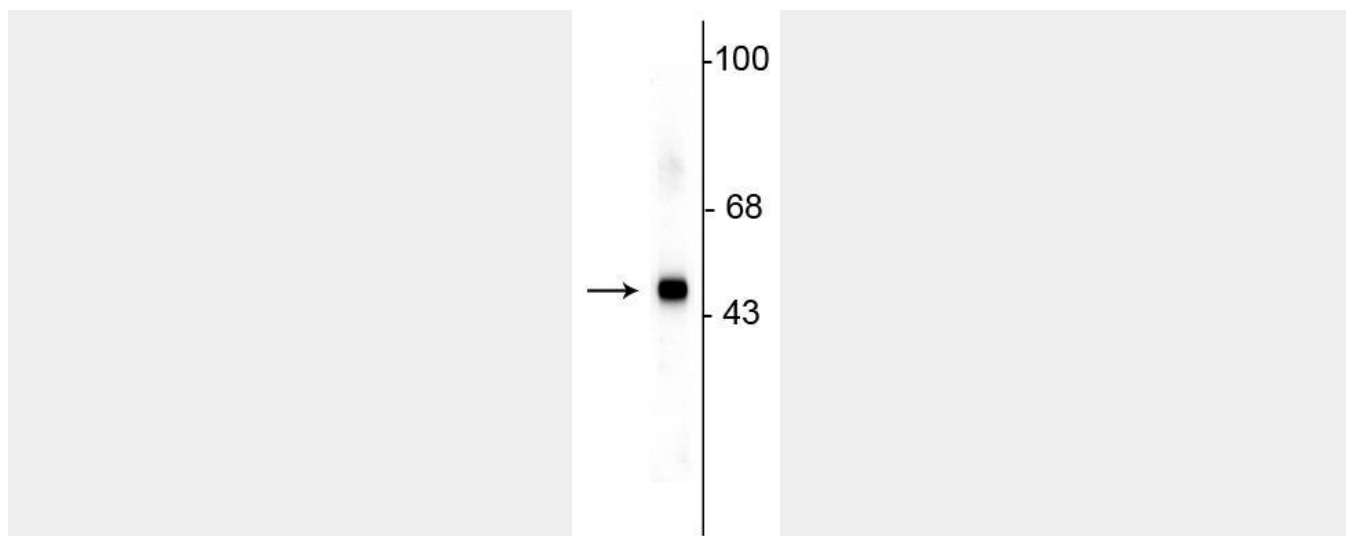
## Anti-SAP49 Antibody - Images



Immunofluorescence of HeLa cells labeled with anti-SAP49 (cat. 1900-SAP, red, 1:1000) and anti-vimentin (cat. 2105-VIM, green, 1:10,000). The blue is DAPI staining nuclear DNA.



Immunofluorescence of HeLa cells showing strong granular nuclear staining of SAP49 (red, 1:1000) and vimentin (cat. 2105-VIM, green, 1:10,000). The blue is DAPI staining nuclear DNA.



Western blot of HeLa lysate showing specific immunolabeling of the ~49 kDa SAP49 protein.

#### **Anti-SAP49 Antibody - Background**

The spliceosome associated protein of ~49 kDa (SAP49), also known as SF3B4, is a widely expressed nuclear splicing factor that has been shown to have RNA binding activity as well as direct interaction with SAP145 (Champion-Arnaud and Reed 1994). The SAP145-SAP49 complex has recently been implicated in cell cycle progression as Vpr (viral protein 1 of HIV-1) has been shown to bind SAP145 thus interfering with the proper formation and functioning of the SAP145-SAP49 complex (Terada and Yasuda 2006).