

Anti-SARM1 Antibody

Our Anti-SARM1 Antibody primary antibody from PhosphoSolutions is rabbit polyclonal. It detects huma
Catalog # AN1549

Specification**Anti-SARM1 Antibody - Product Information**

Application	WB
Primary Accession	Q6SZW1
Reactivity	Bovine
Host	Rabbit
Clonality	Polyclonal
Isotype	IgG
Calculated MW	79388

Anti-SARM1 Antibody - Additional Information

Gene ID **23098**

Other Names

FLJ36296 antibody, KIAA0524 antibody, MyD88-5 antibody, SAM and ARM-containing protein antibody, SAM domain-containing protein 2 antibody, SAMD2 antibody, SARM 1 antibody, SARM1 antibody, SARM1_HUMAN antibody, Sterile alpha and Armadillo repeat protein antibody, sterile alpha and HEAT/Armadillo motif protein, ortholog of Drosophila antibody, sterile alpha and HEAT/Armadillo motifs-containing protein antibody, sterile alpha and TIR motif containing 1 antibody, Sterile alpha and TIR motif-containing protein 1 antibody, Sterile alpha and TIR motifs-containing protein 1 antibody, Sterile alpha motif domain-containing protein 2 antibody, Tir-1 homolog antibody

Target/Specificity

NAD(+) hydrolase sterile alpha and TIR motif-containing protein 1 (SARM1), is the fifth member of the Toll/IL-1 Receptor (TIR) domain protein family. The highly conserved 724 amino acid protein is predominantly expressed in the brain, kidney and liver (Mink, M., et al 2001). Furthermore, SARM1 is enriched in the cytoplasm, mitochondria, and the axons, dendrites, and synapses of neurons (Panneerselvam, P., et al, 2012). SARM1 plays a key role in axonal degeneration by catalyzing the cleavage of NAD⁺ into ADPR, cADPR, and nicotinamide in response to injury triggering Wallerian degeneration (Gerdtts, J. et al 2015). SARM1 has also been shown to activate neuronal cell death in response to stress (Peng, J. et al. 2010).

Dilution

WB~~1:1000

Format

Antigen Affinity Purified from Pooled Serum

Storage

Maintain refrigerated at 2-8°C for up to 6 months. For long term storage store at -20°C in small aliquots to prevent freeze-thaw cycles.

Precautions

Anti-SARM1 Antibody is for research use only and not for use in diagnostic or therapeutic

procedures.

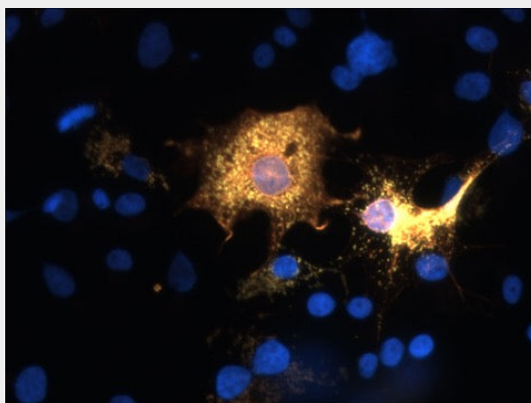
Shipping
Blue Ice

Anti-SARM1 Antibody - Protocols

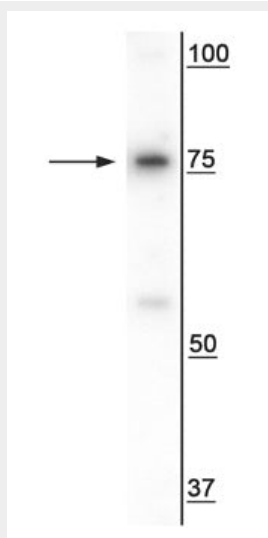
Provided below are standard protocols that you may find useful for product applications.

- [Western Blot](#)
- [Blocking Peptides](#)
- [Dot Blot](#)
- [Immunohistochemistry](#)
- [Immunofluorescence](#)
- [Immunoprecipitation](#)
- [Flow Cytometry](#)
- [Cell Culture](#)

Anti-SARM1 Antibody - Images



Immunofluorescence of transfected COS-7 cells specifically labeling the positive SARM1 cells using our anti-SARM1 antibody (1:50, red) and anti-FLAG antibody (green). The yellow color results from the overlap of cells labeled with both antibodies. DNA is labeled with DAPI (blue).



Western blot of HeLa cell lysate showing specific immunolabeling of the ~79 kDa SARM1 protein.

Anti-SARM1 Antibody - Background

NAD(+) hydrolase sterile alpha and TIR motif-containing protein 1 (SARM1), is the fifth member of the Toll/IL-1 Receptor (TIR) domain protein family. The highly conserved 724 amino acid protein is predominantly expressed in the brain, kidney and liver (Mink, M., et al 2001). Furthermore, SARM1 is enriched in the cytoplasm, mitochondria, and the axons, dendrites, and synapses of neurons (Panneerselvam, P., et al, 2012). SARM1 plays a key role in axonal degeneration by catalyzing the cleavage of NAD⁺ into ADPR, cADPR, and nicotinamide in response to injury triggering Wallerian degeneration (Gerdt, J. et al 2015). SARM1 has also been shown to activate neuronal cell death in response to stress (Peng, J. et al. 2010).