

**Anti-SNAP25 Antibody**

Our Anti-SNAP25 rabbit polyclonal primary antibody from PhosphoSolutions is produced in-house. It de  
Catalog # AN1555

**Specification****Anti-SNAP25 Antibody - Product Information**

Primary Accession	<a href="#">P60881</a>
Reactivity	<b>Bovine</b>
Host	<b>Rabbit</b>
Clonality	<b>Polyclonal</b>
Isotype	<b>IgG</b>
Calculated MW	<b>23315</b>

**Anti-SNAP25 Antibody - Additional Information**

Gene ID **25012**

**Other Names**

bA416N4.2 antibody, Bdr antibody, CMS18 antibody, dJ1068F16.2 antibody, FLJ23079 antibody, HGNC:11132 antibody, MGC105414 antibody, MGC139754 antibody, Resistance to inhibitors of cholinesterase 4 homolog antibody, RIC 4 antibody, RIC4 antibody, SEC 9 antibody, SEC9 antibody, SNAP 25 antibody, SNAP antibody, SNAP-25 antibody, SNAP-25B antibody, SNAP25 antibody, SNP 25 antibody, SNP25 antibody, SNP25\_HUMAN antibody, sp antibody, SUP antibody, Super protein antibody, Synaptosomal associated 25 kDa protein antibody, Synaptosomal associated protein antibody, Synaptosomal associated protein 25 antibody, Synaptosomal associated protein 25kDa antibody, Synaptosomal-associated 25 kDa protein antibody, Synaptosomal-associated protein 25 antibody, Synaptosomal-associated protein 25-KD antibody

**Target/Specificity**

SNAP25 (Synaptosomal associated protein of 25 kDa) is a presynaptic plasma membrane protein that is widely distributed throughout the brain and involved in the regulation of neurotransmitter release. Decreased levels of SNAP25 have been found in the brains of patients with Down Syndrome and Alzheimer's Disease (Greber et al., 1999). In addition, a significant reduction in the hippocampal expression of SNAP25 has also been found in patients with Schizophrenia (Fatemi et al., 2001).

**Format**

Antigen Affinity Purified from Pooled Serum

**Storage**

Maintain refrigerated at 2-8°C for up to 6 months. For long term storage store at -20°C in small aliquots to prevent freeze-thaw cycles.

**Precautions**

Anti-SNAP25 Antibody is for research use only and not for use in diagnostic or therapeutic procedures.

**Shipping**

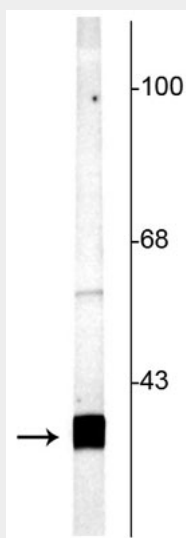
Blue Ice

## Anti-SNAP25 Antibody - Protocols

Provided below are standard protocols that you may find useful for product applications.

- [Western Blot](#)
- [Blocking Peptides](#)
- [Dot Blot](#)
- [Immunohistochemistry](#)
- [Immunofluorescence](#)
- [Immunoprecipitation](#)
- [Flow Cytometry](#)
- [Cell Culture](#)

## Anti-SNAP25 Antibody - Images



Western blot of rat cortical lysate showing specific labeling of the ~25 kDa SNAP25 protein.

## Anti-SNAP25 Antibody - Background

SNAP25 (Synaptosomal associated protein of 25 kDa) is a presynaptic plasma membrane protein that is widely distributed throughout the brain and involved in the regulation of neurotransmitter release. Decreased levels of SNAP25 have been found in the brains of patients with Down Syndrome and Alzheimer's Disease (Greber et al., 1999). In addition, a significant reduction in the hippocampal expression of SNAP25 has also been found in patients with Schizophrenia (Fatemi et al., 2001).