

**Anti-SOX2 Antibody**

**Our Anti-SOX2 rabbit polyclonal primary antibody from PhosphoSolutions is produced in-house. It detects SOX2.**  
**Catalog # AN1557**

**Specification**

---

**Anti-SOX2 Antibody - Product Information**

Application	WB
Primary Accession	<a href="#">P48431</a>
Host	Rabbit
Clonality	Polyclonal
Isotype	IgG
Calculated MW	34310

**Anti-SOX2 Antibody - Additional Information**

Gene ID **6657**

**Other Names**

SRY box 2, sex-determining region Y box 2

**Target/Specificity**

SOX2 (SRY (sex-determining region Y)-box 2) is one of 20 members of the Sox family proteins that play essential roles in cell differentiation, development, and organogenesis. SOX2, a group B Sox family protein, is one of the master transcriptional factors, along with Oct3/4 (Nichols, J., et al, 1998) and PAK6 (Kamachi, Y. et al, 2001) that are important in maintaining the pluripotency of embryonic stem cells, thus making SOX2 an excellent marker of neural stem cells. SOX2 has also been identified as a lineage-survival oncogene in lung and esophageal squamous cell carcinomas due to peak amplification on chromosome 3q26.33 which contains the SOX2 gene transcription factor (Bass, A.J., et al, 2009). Additionally, Sox2 has been reported to be highly deregulated in glioblastomas (Gangemi, R. M. R, et al, 2009) and breast cancer (Rodriguez-Pinilla, S.M., et al, 2007).

**Dilution**

WB~~1:1000

**Format**

Antigen Affinity Purified from Pooled Serum

**Storage**

Maintain refrigerated at 2-8°C for up to 6 months. For long term storage store at -20°C in small aliquots to prevent freeze-thaw cycles.

**Precautions**

Anti-SOX2 Antibody is for research use only and not for use in diagnostic or therapeutic procedures.

**Shipping**

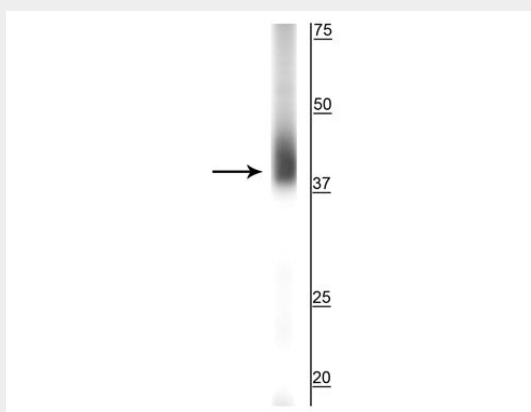
Blue Ice

## Anti-SOX2 Antibody - Protocols

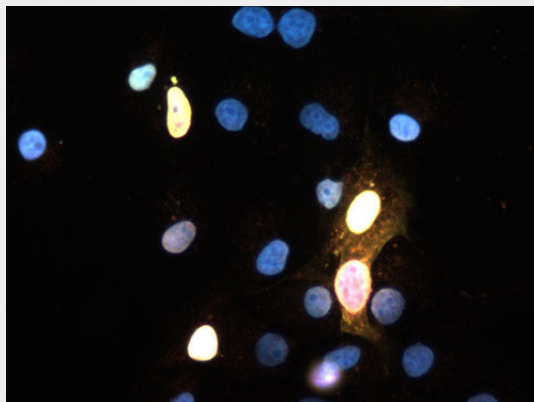
Provided below are standard protocols that you may find useful for product applications.

- [Western Blot](#)
- [Blocking Peptides](#)
- [Dot Blot](#)
- [Immunohistochemistry](#)
- [Immunofluorescence](#)
- [Immunoprecipitation](#)
- [Flow Cytometry](#)
- [Cell Culture](#)

## Anti-SOX2 Antibody - Images



Western blot of NIH 3T3 cell lysate showing specific immunolabeling of the ~35 kDa SOX2 protein.



Immunofluorescence of FLAG-tagged SOX2 transfected COS cells showing SOX2 staining in red (cat. 1907-SOX2, 1:20) and FLAG staining in green, causing positive transfected cells to appear yellow. DNA is stained blue with DAPI.

## Anti-SOX2 Antibody - Background

SOX2 (SRY (sex-determining region Y)-box 2) is one of 20 members of the Sox family proteins that play essential roles in cell differentiation, development, and organogenesis. SOX2, a group B Sox family protein, is one of the master transcriptional factors, along with Oct3/4 (Nichols, J., et al, 1998) and PAK6 (Kamachi, Y. et al, 2001) that are important in maintaining the pluripotency of embryonic stem cells, thus making SOX2 an excellent marker of neural stem cells. SOX2 has also been identified as a lineage-survival oncogene in lung and esophageal squamous cell carcinomas

due to peak amplification on chromosome 3q26.33 which contains the SOX2 gene transcription factor (Bass, A.J., et al, 2009). Additionally, Sox2 has been reported to be highly deregulated in glioblastomas (Gangemi, R. M. R, et al, 2009) and breast cancer (Rodriguez-Pinilla, S.M., et al, 2007).