

Anti-Synaptojanin 1 Antibody

Our Anti-Synaptojanin 1 primary antibody from PhosphoSolutions is mouse monoclonal. It detects rat S
Catalog # AN1567

Specification

Anti-Synaptojanin 1 Antibody - Product Information

Application	WB
Primary Accession	Q62910
Reactivity	Bovine
Host	Mouse
Clonality	Monoclonal
Isotype	IgG1
Calculated MW	172881

Anti-Synaptojanin 1 Antibody - Additional Information

Gene ID **85238**

Other Names

4 antibody, 5-trisphosphate 5-phosphatase 1 antibody, Inositol 5' phosphatase (synaptojanin 1) antibody, Inositol 5' phosphatase antibody, INPP 5G antibody, INPP5G antibody, KIAA0910 antibody, PARK20 antibody, Polyphosphoinositide phosphatase antibody, Synaptic inositol 1 4 5 trisphosphate 5 phosphatase 1 antibody, Synaptic inositol 145 trisphosphate 5 phosphatase 1 antibody, Synaptic inositol-1 antibody, Synaptojanin antibody, Synaptojanin 1 antibody, Synaptojanin 1 polyphosphoinositide phosphatase antibody, Synaptojanin-1 antibody, Synaptojanin1 antibody, Synj 1 antibody, Synj1 antibody, SYNJ1_HUMAN antibody

Target/Specificity

Synaptojanin is a phosphatidylinositol phosphatase involved in clathrin-mediated endocytosis of synaptic vesicles. Synaptojanin 1 has two alternatively spliced isoforms; one that is ~ 145 kDa and is exclusively expressed in neurons, and the other ~ 170 kDa which is expressed in non-neuronal, peripheral tissues (Ramjaun AR & McPherson PS, 1996). The gene which encodes Synaptojanin 1, SYNJ1, has been mapped to chromosome 21 thus making it a candidate for involvement in Down's syndrome (DS). It has recently been demonstrated that Ts65Dn mice (the most commonly used model of DS) have altered phosphatidylinositol-4,5- biphosphate metabolism. This defect is rescued by restoring SYNJ1 to disomy in the Ts65Dn mice (Voronov SV et al., 2008).

Dilution

WB~~1:1000

Format

Protein G Purified

Storage

Maintain refrigerated at 2-8°C for up to 6 months. For long term storage store at -20°C in small aliquots to prevent freeze-thaw cycles.

Precautions

Anti-Synaptojanin 1 Antibody is for research use only and not for use in diagnostic or therapeutic procedures.

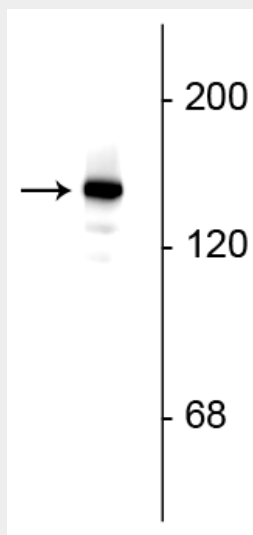
Shipping
Blue Ice

Anti-Synaptojanin 1 Antibody - Protocols

Provided below are standard protocols that you may find useful for product applications.

- [Western Blot](#)
- [Blocking Peptides](#)
- [Dot Blot](#)
- [Immunohistochemistry](#)
- [Immunofluorescence](#)
- [Immunoprecipitation](#)
- [Flow Cytometry](#)
- [Cell Culture](#)

Anti-Synaptojanin 1 Antibody - Images



Western blot of rat hippocampal lysate showing specific immunolabeling of the ~145 kDa synaptojanin I protein.

Anti-Synaptojanin 1 Antibody - Background

Synaptojanin is a phosphatidylinositol phosphatase involved in clathrin-mediated endocytosis of synaptic vesicles. Synaptojanin 1 has two alternatively spliced isoforms; one that is ~ 145 kDa and is exclusively expressed in neurons, and the other ~ 170 kDa which is expressed in non-neuronal, peripheral tissues (Ramjaun AR & McPherson PS, 1996). The gene which encodes Synaptojanin 1, SYNJ1, has been mapped to chromosome 21 thus making it a candidate for involvement in Down's syndrome (DS). It has recently been demonstrated that Ts65Dn mice (the most commonly used model of DS) have altered phosphatidylinositol-4,5- bisphosphate metabolism. This defect is rescued by restoring SYNJ1 to disomy in the Ts65Dn mice (Voronov SV et al., 2008).