

**Anti-Synaptophysin 2 Antibody**

**Our Anti-Synaptophysin 2 rabbit polyclonal primary antibody from PhosphoSolutions is produced in-house**  
**Catalog # AN1568**

**Specification**

---

**Anti-Synaptophysin 2 Antibody - Product Information**

Application	<b>WB</b>
Primary Accession	<a href="#">P22831</a>
Host	<b>Rabbit</b>
Clonality	<b>Polyclonal</b>
Isotype	<b>IgG</b>
Calculated MW	<b>29107</b>

**Anti-Synaptophysin 2 Antibody - Additional Information**

Gene ID **66030**

**Other Names**

DKFZp686G0883 antibody, MGC26651 antibody, SPO antibody, Synaptophysin 2 antibody, Synaptoporin antibody, Synpr antibody, SYNPR\_HUMAN antibody

**Target/Specificity**

Synaptophysin 2, also known as Synaptoporin, is a component of the synaptic vesicle membrane and thought to play an important role in synaptic vesicle trafficking (Dai et al., 2003). It is highly homologous to Synaptophysin 1, yet differs in expression. Whereas Synaptophysin 1 is ubiquitously expressed, Synaptophysin 2 is concentrated in the mossy fiber synapses of the hippocampus (Grabs et al., 1994; Singec et al., 2002).

**Dilution**

WB~~1:1000

**Format**

Antigen Affinity Purified from Pooled Serum

**Storage**

Maintain refrigerated at 2-8°C for up to 6 months. For long term storage store at -20°C in small aliquots to prevent freeze-thaw cycles.

**Precautions**

Anti-Synaptophysin 2 Antibody is for research use only and not for use in diagnostic or therapeutic procedures.

**Shipping**

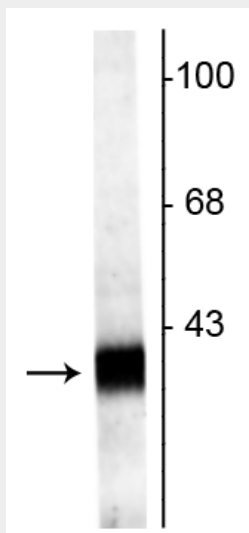
Blue Ice

**Anti-Synaptophysin 2 Antibody - Protocols**

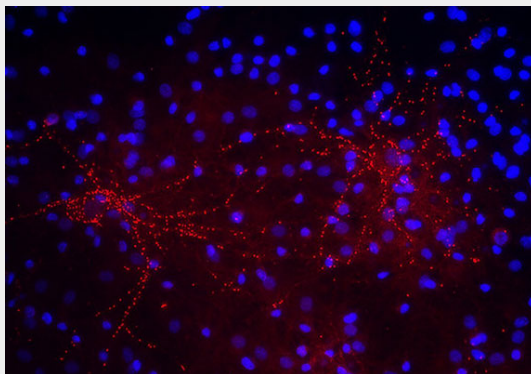
Provided below are standard protocols that you may find useful for product applications.

- [Western Blot](#)
- [Blocking Peptides](#)
- [Dot Blot](#)
- [Immunohistochemistry](#)
- [Immunofluorescence](#)
- [Immunoprecipitation](#)
- [Flow Cytometry](#)
- [Cell Culture](#)

#### Anti-Synaptophysin 2 Antibody - Images



Western blot of rat hippocampal lysate showing specific labeling of the ~38 kDa Synaptophysin2 protein.



Immunostaining of 40DIV cultured rat cortical neurons showing punctate labeling of synaptophysin (cat. 1950-SNT2, red, 1:100). The blue is staining nuclear DNA. Cells and photo courtesy of QBMCellScience.

#### Anti-Synaptophysin 2 Antibody - Background

Synaptophysin 2, also known as Synaptoporin, is a component of the synaptic vesicle membrane and thought to play an important role in synaptic vesicle trafficking (Dai et al., 2003). It is highly homologous to Synaptophysin 1, yet differs in expression. Whereas Synaptophysin 1 is ubiquitously expressed, Synaptophysin 2 is concentrated in the mossy fiber synapses of the hippocampus (Grabs et al., 1994; Singec et al., 2002).