

Anti-Synaptotagmin 1 Antibody

Our Anti-synaptotagmin 1 rabbit polyclonal primary antibody from PhosphoSolutions is produced in-house
Catalog # AN1569

Specification

Anti-Synaptotagmin 1 Antibody - Product Information

Primary Accession	P21707
Host	Rabbit
Clonality	Polyclonal
Isotype	IgG
Calculated MW	47399

Anti-Synaptotagmin 1 Antibody - Additional Information

Gene ID **25716**

Other Names

DKFZp781D2042 antibody, FLJ42519 antibody, P65 antibody, SVP65 antibody, synaptotagmin 1 antibody, Synaptotagmin I antibody, SYT antibody, SYT1 antibody, SytI antibody

Target/Specificity

Synaptotagmin 1 is a synaptic vesicle membrane glycoprotein that is widely expressed throughout the CNS and is generally thought to act as the Ca²⁺ sensor in the regulation of exocytosis and neurotransmitter release (Littleton and Bellen 1995). Recent studies indicate that synaptotagmin's Ca²⁺ mediated binding of SNAP25 is essential for the Ca²⁺ dependent triggering of membrane fusion (Zhang et al., 2002). It has recently been demonstrated that discrete residues within the c(2)b binding domain of synaptotagmin 1 independently specify endocytic rate and synaptic vesicle size (Poskanzer et al., 2006).

Format

Antigen Affinity Purified from Pooled Serum

Storage

Maintain refrigerated at 2-8°C for up to 6 months. For long term storage store at -20°C in small aliquots to prevent freeze-thaw cycles.

Precautions

Anti-Synaptotagmin 1 Antibody is for research use only and not for use in diagnostic or therapeutic procedures.

Shipping

Blue Ice

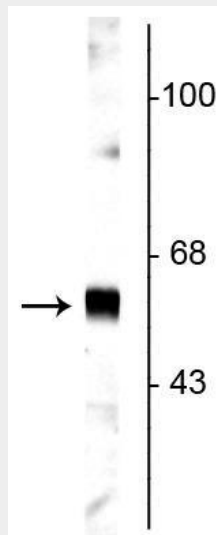
Anti-Synaptotagmin 1 Antibody - Protocols

Provided below are standard protocols that you may find useful for product applications.

- [Western Blot](#)

- [Blocking Peptides](#)
- [Dot Blot](#)
- [Immunohistochemistry](#)
- [Immunofluorescence](#)
- [Immunoprecipitation](#)
- [Flow Cytometry](#)
- [Cell Culture](#)

Anti-Synaptotagmin 1 Antibody - Images



Western blot of rat cortical lysate showing specific labeling of the ~65 kDa synaptotagmin protein.

Anti-Synaptotagmin 1 Antibody - Background

Synaptotagmin 1 is a synaptic vesicle membrane glycoprotein that is widely expressed throughout the CNS and is generally thought to act as the Ca^{2+} sensor in the regulation of exocytosis and neurotransmitter release (Littleton and Bellen 1995). Recent studies indicate that synaptotagmin's Ca^{2+} mediated binding of SNAP25 is essential for the Ca^{2+} dependent triggering of membrane fusion (Zhang et al., 2002). It has recently been demonstrated that discrete residues within the c(2)b binding domain of synaptotagmin 1 independently specify endocytic rate and synaptic vesicle size (Poskanzer et al., 2006).