

Anti-Syntaxin Antibody

Our Anti-Syntaxin primary antibody from PhosphoSolutions is mouse monoclonal. It detects human, rat, Catalog # AN1572

Specification

Anti-Syntaxin Antibody - Product Information

Application	WB
Primary Accession	Q16623
Reactivity	Bovine, Chicken, Drosophila, C.Elegans
Host	Mouse
Clonality	Monoclonal
Isotype	IgG1
Calculated MW	33023

Anti-Syntaxin Antibody - Additional Information

Gene ID **6804**

Other Names

HPC 1 antibody, Neuron specific antigen HPC1 antibody, Neuron-specific antigen HPC-1 antibody, OTTHUMP00000174615 antibody, OTTHUMP00000174616 antibody, OTTHUMP00000174617 antibody, OTTHUMP00000174618 antibody, P35-1 antibody, STX1 antibody, STX1A antibody, STX1A_HUMAN antibody, SYN1A antibody, Syntaxin 1A (brain) antibody, Syntaxin 1A brain antibody, Syntaxin-1A antibody

Target/Specificity

Syntaxins are a family of proteins involved in the docking of synaptic vesicles with the plasma membrane. Syntaxin, along with synaptobrevin and SNAP-25, forms the SNARE complex which mediates synaptic vesicle fusion and exocytosis. Binding of Munc18-1 to the N-terminus of syntaxin 1 has been demonstrated to be essential for exocytic membrane fusion (Khvotchev et al., 2007). Decreased levels of phosphorylated syntaxin 1 in the prefrontal cortex have recently been correlated with schizophrenia (Castillo et al., 2010).

Dilution

WB~~1:1000

Format

Protein G Purified

Storage

Maintain refrigerated at 2-8°C for up to 6 months. For long term storage store at -20°C in small aliquots to prevent freeze-thaw cycles.

Precautions

Anti-Syntaxin Antibody is for research use only and not for use in diagnostic or therapeutic procedures.

Shipping

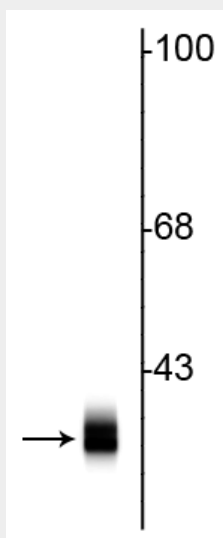
Blue Ice

Anti-Syntaxin Antibody - Protocols

Provided below are standard protocols that you may find useful for product applications.

- [Western Blot](#)
- [Blocking Peptides](#)
- [Dot Blot](#)
- [Immunohistochemistry](#)
- [Immunofluorescence](#)
- [Immunoprecipitation](#)
- [Flow Cytometry](#)
- [Cell Culture](#)

Anti-Syntaxin Antibody - Images



Western blot of rat cortical lysate showing specific immunolabeling of the ~ 36 kDa syntaxin 1A protein.

Anti-Syntaxin Antibody - Background

Syntaxins are a family of proteins involved in the docking of synaptic vesicles with the plasma membrane. Syntaxin, along with synaptobrevin and SNAP-25, forms the SNARE complex which mediates synaptic vesicle fusion and exocytosis. Binding of Munc18-1 to the N-terminus of syntaxin 1 has been demonstrated to be essential for exocytic membrane fusion (Khvotchev et al., 2007). Decreased levels of phosphorylated syntaxin 1 in the prefrontal cortex have recently been correlated with schizophrenia (Castillo et al., 2010).