

Anti-Troponin I (cardiac) Ser150 Antibody

Our Anti-Troponin I (cardiac) Ser150 rabbit polyclonal phosphospecific primary antibody from Phospho
Catalog # AN1590

Specification

Anti-Troponin I (cardiac) Ser150 Antibody - Product Information

Primary Accession	P48787
Reactivity	Bovine
Host	Rabbit
Clonality	Polyclonal
Isotype	IgG
Calculated MW	24259

Anti-Troponin I (cardiac) Ser150 Antibody - Additional Information

Gene ID **21954**

Other Names

cardiac muscle antibody, Cardiac troponin I antibody, Cardiac Troponin I antibody, cardiomyopathy dilated 2A (autosomal recessive) antibody, Cardiomyopathy familial hypertrophic 7 included antibody, CMD1FF antibody, CMD2A antibody, CMH7 antibody, cTnI antibody, Familial hypertrophic cardiomyopathy 7 antibody, MGC116817 antibody, RCM1 antibody, Tn1 antibody, Tni antibody, TNN I3 antibody, TNNC 1 antibody, TNNC1 antibody, TNNI3 antibody, TNNI3_HUMAN antibody, Troponin I antibody, Troponin I cardiac antibody, Troponin I cardiac muscle antibody, Troponin I cardiac muscle isoform antibody, Troponin I type 3 cardiac antibody, troponin I cardiac 3 antibody, TroponinI antibody, Troponin I type 3 (cardiac) antibody

Target/Specificity

Troponin I (TnI) is 1 of 3 subunits, along with troponin C (TnC) and Troponin T (TnT) of troponin complex found in cardiac (cTnI) and fast skeletal (fsTnI) muscle. cTnI is phosphorylated by protein kinase C and protein kinase A at Ser-23/24 (Noland et al, 1995) and is phosphorylated by AMPK at Ser-23 and Ser-150 (Solis et al, 2011). Evidence suggests that AMPK, a critical regulator of cardiac energetics, prefers phosphorylating Ser-150 over Ser-23, and may play a role in regulating energy consumption through altering the phosphorylation status of cTnI (Solis et al., 2011).

Format

Antigen Affinity Purified from Pooled Serum

Storage

Maintain refrigerated at 2-8°C for up to 6 months. For long term storage store at -20°C in small aliquots to prevent freeze-thaw cycles.

Precautions

Anti-Troponin I (cardiac) Ser150 Antibody is for research use only and not for use in diagnostic or therapeutic procedures.

Shipping

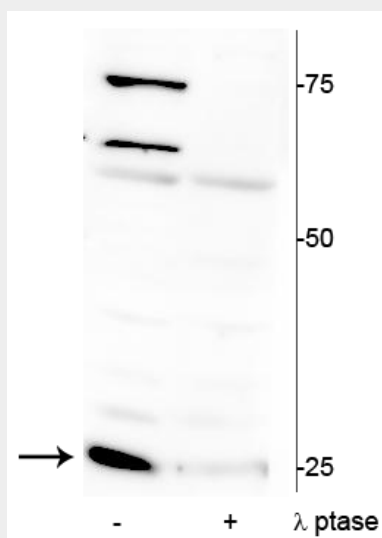
Blue Ice

Anti-Troponin I (cardiac) Ser150 Antibody - Protocols

Provided below are standard protocols that you may find useful for product applications.

- [Western Blot](#)
- [Blocking Peptides](#)
- [Dot Blot](#)
- [Immunohistochemistry](#)
- [Immunofluorescence](#)
- [Immunoprecipitation](#)
- [Flow Cytometry](#)
- [Cell Culture](#)

Anti-Troponin I (cardiac) Ser150 Antibody - Images



Western blot of mouse heart lysate showing specific immunolabeling of ~25 kDa cardiac troponin I protein phosphorylated at Ser150 in the first lane (-). Phosphospecificity is shown in the second lane (+) where the immunolabeling is completely greatly decreased by blot treatment with lambda phosphatase (λ -Ptase, 1200 units for 30 minutes).

Anti-Troponin I (cardiac) Ser150 Antibody - Background

Troponin I (TnI) is 1 of 3 subunits, along with troponin C (TnC) and Troponin T (TnT) of troponin complex found in cardiac (cTnI) and fast skeletal (fsTnI) muscle. cTnI is phosphorylated by protein kinase C and protein kinase A at Ser-23/24 (Noland et al, 1995) and is phosphorylated by AMPK at Ser-23 and Ser-150 (Solis et al, 2011). Evidence suggests that AMPK, a critical regulator of cardiac energetics, prefers phosphorylating Ser-150 over Ser-23, and may play a role in regulating energy consumption through altering the phosphorylation status of cTnI (Solis et al., 2011).