

Anti-Troponin I (cardiac) Ser43 Antibody

Our Anti-Troponin I (cardiac) Ser43 rabbit polyclonal phosphospecific primary antibody from PhosphoS
Catalog # AN1591

Specification

Anti-Troponin I (cardiac) Ser43 Antibody - Product Information

Primary Accession	P48787
Reactivity	Bovine
Host	Rabbit
Clonality	Polyclonal
Isotype	IgG
Calculated MW	24259

Anti-Troponin I (cardiac) Ser43 Antibody - Additional Information

Gene ID **21954**

Other Names

cardiac muscle antibody, Cardiac troponin I antibody, Cardiac Troponin I antibody, cardiomyopathy dilated 2A (autosomal recessive) antibody, Cardiomyopathy familial hypertrophic 7 included antibody, CMD1FF antibody, CMD2A antibody, CMH7 antibody, cTnI antibody, Familial hypertrophic cardiomyopathy 7 antibody, MGC116817 antibody, RCM1 antibody, Tn1 antibody, Tni antibody, TNN I3 antibody, TNNC 1 antibody, TNNC1 antibody, TNNI3 antibody, TNNI3_HUMAN antibody, Troponin I antibody, Troponin I cardiac antibody, Troponin I cardiac muscle antibody, Troponin I cardiac muscle isoform antibody, Troponin I type 3 cardiac antibody, troponin I cardiac 3 antibody, TroponinI antibody, Troponin I type 3 (cardiac) antibody

Target/Specificity

Troponin I (TnI) is 1 of 3 subunits, along with troponin C (TnC) and Troponin T (TnT) of troponin complex found in cardiac (cTnI) and fast skeletal (fsTnI) muscle (Noland et al, 1995). Protein kinase C-mediated phosphorylation of cardiac myofilament proteins has been shown to depress the actomyosin interaction and may be important during heart failure. (Montgomery et al, 2002) Studies indicate that phosphorylation of Ser-43 and Ser-45 of cardiac troponin I plays a substantial role in the PKC mediated depression. (Montgomery et al, 2002).

Format

Antigen Affinity Purified from Pooled Serum

Storage

Maintain refrigerated at 2-8°C for up to 6 months. For long term storage store at -20°C in small aliquots to prevent freeze-thaw cycles.

Precautions

Anti-Troponin I (cardiac) Ser43 Antibody is for research use only and not for use in diagnostic or therapeutic procedures.

Shipping

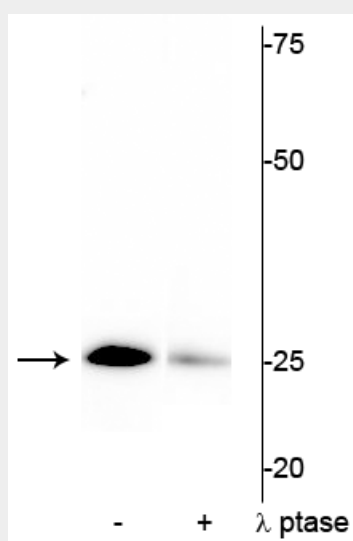
Blue Ice

Anti-Troponin I (cardiac) Ser43 Antibody - Protocols

Provided below are standard protocols that you may find useful for product applications.

- [Western Blot](#)
- [Blocking Peptides](#)
- [Dot Blot](#)
- [Immunohistochemistry](#)
- [Immunofluorescence](#)
- [Immunoprecipitation](#)
- [Flow Cytometry](#)
- [Cell Culture](#)

Anti-Troponin I (cardiac) Ser43 Antibody - Images



Western blot of mouse heart lysate showing specific immunolabeling of the ~25 kDa cardiac troponin I protein phosphorylated at Ser43 in the first lane (-). Phosphospecificity is shown in the second lane (+) where the immunolabeling is greatly decreased by blot treatment with lambda phosphatase (λ -Ptase, 1200 units for 30 minutes).

Anti-Troponin I (cardiac) Ser43 Antibody - Background

Troponin I (TnI) is 1 of 3 subunits, along with troponin C (TnC) and Troponin T (TnT) of troponin complex found in cardiac (cTnI) and fast skeletal (fsTnI) muscle (Noland et al, 1995). Protein kinase C-mediated phosphorylation of cardiac myofilament proteins has been shown to depress the actomyosin interaction and may be important during heart failure. (Montgomery et al, 2002) Studies indicate that phosphorylation of Ser-43 and Ser-45 of cardiac troponin I plays a substantial role in the PKC mediated depression. (Montgomery et al, 2002).