

**Anti-Tyrosine Hydroxylase Antibody**

Our Anti-Tyrosine Hydroxylase rabbit polyclonal primary antibody from PhosphoSolutions is produced in house.  
Catalog # AN1597

**Specification****Anti-Tyrosine Hydroxylase Antibody - Product Information**

Application	WB, IHC
Primary Accession	<a href="#">P04177</a>
Host	Rabbit
Clonality	Polyclonal
Isotype	IgG
Calculated MW	55966

**Anti-Tyrosine Hydroxylase Antibody - Additional Information**

Gene ID **25085**

**Other Names**

Dystonia 14 antibody, DYT14 antibody, DYT5b antibody, EC 1.14.16.2 antibody, OTTHUMP00000011225 antibody, OTTHUMP00000011226 antibody, ple antibody, Protein Pale antibody, TH antibody, The antibody, TY3H\_HUMAN antibody, TYH antibody, Tyrosine 3 hydroxylase antibody, Tyrosine 3 monooxygenase antibody, Tyrosine 3-hydroxylase antibody, Tyrosine 3-monooxygenase antibody, Tyrosine hydroxylase antibody

**Target/Specificity**

Tyrosine hydroxylase (TH) is the rate-limiting enzyme in the synthesis of the catecholamines dopamine and norepinephrine. TH antibodies can therefore be used as markers for dopaminergic and noradrenergic neurons in a variety of applications including depression, schizophrenia, Parkinson's disease and drug abuse (Kish et al., 2001; Zhu et al., 2000; Zhu et al., 1999). TH antibodies can also be used to explore basic mechanisms of dopamine and norepinephrine signaling (Witkovsky et al., 2000; Salvatore et al., 2001; Dunkley et al., 2004).

**Dilution**

WB~~1:1000  
IHC~~1:100~500

**Format**

Antigen Affinity Purified from Pooled Serum

**Storage**

Maintain refrigerated at 2-8°C for up to 6 months. For long term storage store at -20°C in small aliquots to prevent freeze-thaw cycles.

**Precautions**

Anti-Tyrosine Hydroxylase Antibody is for research use only and not for use in diagnostic or therapeutic procedures.

**Shipping**

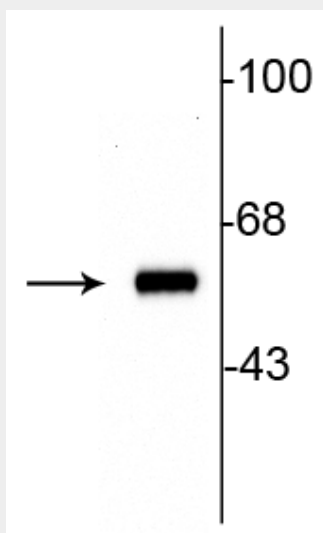
Blue Ice

## Anti-Tyrosine Hydroxylase Antibody - Protocols

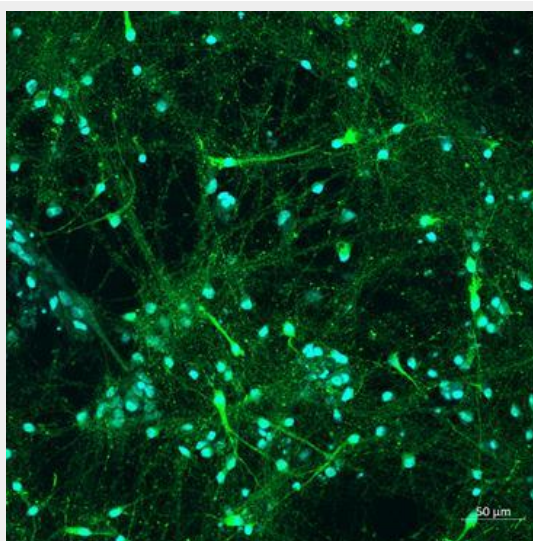
Provided below are standard protocols that you may find useful for product applications.

- [Western Blot](#)
- [Blocking Peptides](#)
- [Dot Blot](#)
- [Immunohistochemistry](#)
- [Immunofluorescence](#)
- [Immunoprecipitation](#)
- [Flow Cytometry](#)
- [Cell Culture](#)

## Anti-Tyrosine Hydroxylase Antibody - Images

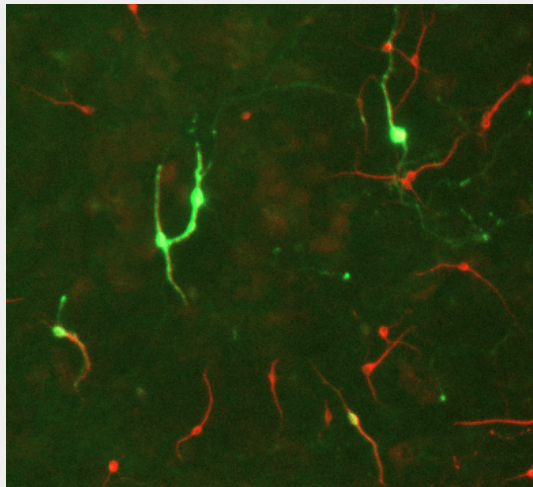


Western blot of 10ug of rat striatal lysate showing specific immunolabeling of the ~60 kDa tyrosine hydroxylase protein.



Immunofluorescence of human iPSC-derived dopaminergic neurons labeled with anti-tyrosine hydroxylase (cat. 2025-THRAB, green, 1:500). The blue stain is DAPI. Before labeling, cells were

fixed with 4% PFA and permeabilized with 0.1 to 0.3 % Triton X. This image is kindly provided by Aurelie de Rus Jacquet, Howard Hughes Medical Institute, Janelia Research Campus.



Immunostaining of E17 rat midbrain mixed neuronal cultures showing TH positive neurons (cat. 2025-THRAB, green, 1:500) and MAP2 (cat. 1100-MAP2, red, 1:2000). Before labeling, cells were fixed with 4% PFA in PBS and permeabilized for 1 hour 0.3 % Triton X. Image courtesy of Aurélie de Rus Jacquet, laboratory of Dr. Jean-Christophe Rochet, Purdue University.

#### **Anti-Tyrosine Hydroxylase Antibody - Background**

Tyrosine hydroxylase (TH) is the rate-limiting enzyme in the synthesis of the catecholamines dopamine and norepinephrine. TH antibodies can therefore be used as markers for dopaminergic and noradrenergic neurons in a variety of applications including depression, schizophrenia, Parkinson's disease and drug abuse (Kish et al., 2001; Zhu et al., 2000; Zhu et al., 1999). TH antibodies can also be used to explore basic mechanisms of dopamine and norepinephrine signaling (Witkovsky et al., 2000; Salvatore et al., 2001; Dunkley et al., 2004).