

**Anti-Tyrosine Hydroxylase Antibody**

Our Anti-Tyrosine Hydroxylase sheep polyclonal primary antibody from PhosphoSolutions is produced in  
Catalog # AN1598

**Specification**

---

**Anti-Tyrosine Hydroxylase Antibody - Product Information**

Application	WB, IHC
Primary Accession	<a href="#">P04177</a>
Host	Sheep
Clonality	Polyclonal
Isotype	IgG
Calculated MW	55966

**Anti-Tyrosine Hydroxylase Antibody - Additional Information**

Gene ID **25085**

**Other Names**

Dystonia 14 antibody, DYT14 antibody, DYT5b antibody, EC 1.14.16.2 antibody, OTTHUMP00000011225 antibody, OTTHUMP00000011226 antibody, ple antibody, Protein Pale antibody, TH antibody, The antibody, TY3H\_HUMAN antibody, TYH antibody, Tyrosine 3 hydroxylase antibody, Tyrosine 3 monooxygenase antibody, Tyrosine 3-hydroxylase antibody, Tyrosine 3-monooxygenase antibody, Tyrosine hydroxylase antibody

**Target/Specificity**

Tyrosine hydroxylase (TH) is the rate-limiting enzyme in the synthesis of the catecholamines dopamine and norepinephrine. TH antibodies can therefore be used as markers for dopaminergic and noradrenergic neurons in a variety of applications including depression, schizophrenia, Parkinson's disease and drug abuse (Kish et al., 2001; Zhu et al., 2000; Zhu et al., 1999). TH antibodies can also be used to explore basic mechanisms of dopamine and norepinephrine signaling (Witkovsky et al., 2000; Salvatore et al., 2001).

**Dilution**

WB~~1:1000

IHC~~1:100~500

**Format**

Antigen Affinity Purified from Pooled Serum

**Storage**

Maintain refrigerated at 2-8°C for up to 6 months. For long term storage store at -20°C in small aliquots to prevent freeze-thaw cycles.

**Precautions**

Anti-Tyrosine Hydroxylase Antibody is for research use only and not for use in diagnostic or therapeutic procedures.

**Shipping**

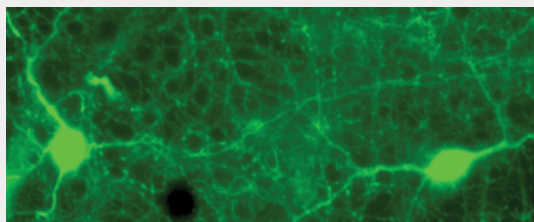
Blue Ice

## Anti-Tyrosine Hydroxylase Antibody - Protocols

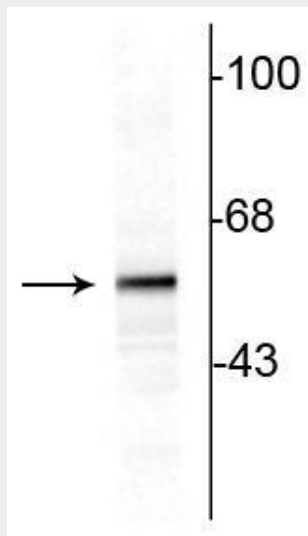
Provided below are standard protocols that you may find useful for product applications.

- [Western Blot](#)
- [Blocking Peptides](#)
- [Dot Blot](#)
- [Immunohistochemistry](#)
- [Immunofluorescence](#)
- [Immunoprecipitation](#)
- [Flow Cytometry](#)
- [Cell Culture](#)

## Anti-Tyrosine Hydroxylase Antibody - Images



Immunostaining of rabbit retina showing specific labeling of tyrosine hydroxylase in green.



Western blot of 10ug of rat striatal lysate showing specific immunolabeling of the ~60 kDa tyrosine hydroxylase protein.

## Anti-Tyrosine Hydroxylase Antibody - Background

Tyrosine hydroxylase (TH) is the rate-limiting enzyme in the synthesis of the catecholamines dopamine and norepinephrine. TH antibodies can therefore be used as markers for dopaminergic and noradrenergic neurons in a variety of applications including depression, schizophrenia, Parkinson's disease and drug abuse (Kish et al., 2001; Zhu et al., 2000; Zhu et al., 1999). TH antibodies can also be used to explore basic mechanisms of dopamine and norepinephrine signaling (Witkovsky et al., 2000; Salvatore et al., 2001).