

**Anti-Visinin-Like Protein 1 (VSNL1) Antibody**  
**Our Anti-Visinin-Like Protein 1 (VSNL1) mouse monoclonal primary antibody from**  
**PhosphoSolutions is p**  
**Catalog # AN1608**

## Specification

---

### Anti-Visinin-Like Protein 1 (VSNL1) Antibody - Product Information

Application	WB, IHC
Primary Accession	<a href="#">P62760</a>
Reactivity	Bovine
Host	Mouse
Clonality	Monoclonal
Isotype	IgG1
Calculated MW	22142

### Anti-Visinin-Like Protein 1 (VSNL1) Antibody - Additional Information

Gene ID **7447**

#### Other Names

21 kDa CABP antibody, Hippocalcin like protein 3 antibody, Hippocalcin-like protein 3 antibody, HLP 3 antibody, HLP3 antibody, HPCAL 3 antibody, HPCAL3 antibody, HUVISL1 antibody, Neural visinin-like protein 1 antibody, Neural visinin-like type 1 protein antibody, Neurocalcin alpha antibody, NVL 1 antibody, NVL1 antibody, Nvp1 antibody, OZ1 antibody, Ratnvp1 antibody, VILIP antibody, VILIP1 antibody, VILIP-1 antibody, Visinin antibody, Visinin like 1 antibody, Visinin like protein 1 antibody, Visinin-like protein 1 antibody, VISL 1 antibody, VISL1 antibody, VISL1\_HUMAN antibody, VLP-1 antibody, Vnsl1 antibody, Vsnl1 antibody

#### Target/Specificity

Visinin-like protein 1 (VSNL1), also known as VILIP1, is a calcium sensor protein expressed exclusively in neurons. Highest levels of VSNL1 expression are found in cerebellar Purkinje cells. VSNL1 has been implicated in the modulation of cell signaling cascades via regulation of adenyl cyclase activity (Braunewell et al., 1997). Additionally, VSNL1 has been associated with amyloid plaques and neurofibrillar tangles in Alzheimer's disease (Schnurra et al., 2001).

#### Dilution

WB~~1:1000  
IHC~~1:100~500

#### Format

Protein G Purified

#### Storage

Maintain refrigerated at 2-8°C for up to 6 months. For long term storage store at -20°C in small aliquots to prevent freeze-thaw cycles.

#### Precautions

Anti-Visinin-Like Protein 1 (VSNL1) Antibody is for research use only and not for use in diagnostic or therapeutic procedures.

#### Shipping

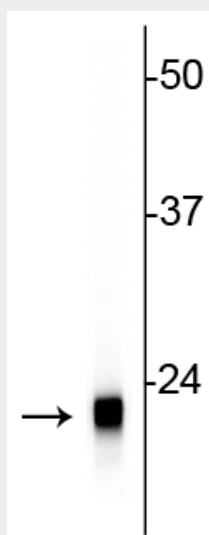
Blue Ice

### Anti-Visinin-Like Protein 1 (VSNL1) Antibody - Protocols

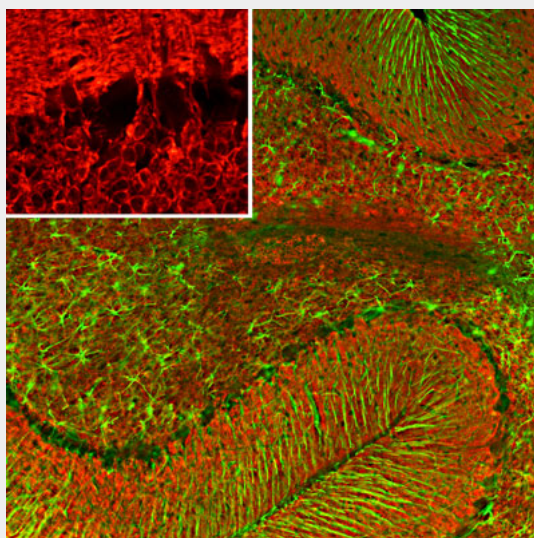
Provided below are standard protocols that you may find useful for product applications.

- [Western Blot](#)
- [Blocking Peptides](#)
- [Dot Blot](#)
- [Immunohistochemistry](#)
- [Immunofluorescence](#)
- [Immunoprecipitation](#)
- [Flow Cytometry](#)
- [Cell Culture](#)

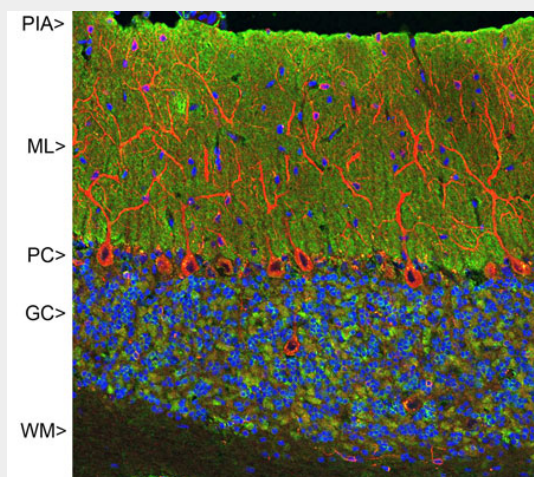
### Anti-Visinin-Like Protein 1 (VSNL1) Antibody - Images



Western blot of rat cerebellar lysate showing specific immunolabeling of the ~22 kDa VSNL1 protein.



Immunofluorescence of a section of rat cerebellum labeled with anti-visinin-like 1 protein (cat. 2145-VSNL1, 1:500, red) and anti-GFAP (cat. 620-GFAP, green, 1:5000). The anti-VSNL1 reveals protein expressed in the granule cell membranes and in synapses in the white matter and molecular layers. The anti-GFAP reveals protein expressed in the processes of Bergmann glia and astroglia.



Anti-Visinin-Like Protein 1 (VSNL1) Antibody

#### **Anti-Visinin-Like Protein 1 (VSNL1) Antibody - Background**

Visinin-like protein 1 (VSNL1), also known as VILIP1, is a calcium sensor protein expressed exclusively in neurons. Highest levels of VSNL1 expression are found in cerebellar Purkinje cells. VSNL1 has been implicated in the modulation of cell signaling cascades via regulation of adenylyl cyclase activity (Braunewell et al., 1997). Additionally, VSNL1 has been associated with amyloid plaques and neurofibrillar tangles in Alzheimer's disease (Schnurra et al., 2001).