

Anti-E-Cadherin (Cytoplasmic) Antibody
Catalog # AN1655**Specification****Anti-E-Cadherin (Cytoplasmic) Antibody - Product Information**

| | |
|-------------------|------------------------|
| Application | WB, IHC, IF |
| Primary Accession | P09803 |
| Reactivity | Bovine |
| Host | Mouse |
| Clonality | Mouse Monoclonal |
| Isotype | IgG1 |
| Calculated MW | 98256 |

Anti-E-Cadherin (Cytoplasmic) Antibody - Additional Information

| | |
|--|-------|
| Gene ID | 12550 |
| Other Names | |
| Uvomorulin, Cadherin-1, CTF1, CTF2, CTF3, CD324, Epithelial Cadherin | |

Target/Specificity

Cadherins are transmembrane glycoproteins vital in calcium-dependent cell-cell adhesion during tissue differentiation. Cadherins cluster to form foci of homophilic binding units. A key determinant to the strength of the cadherin-mediated adhesion may be by the juxtamembrane region in cadherins. This region induces clustering and also binds to the protein p120 catenin. The cytoplasmic region is highly conserved in sequence and has been shown experimentally to regulate the cell-cell binding function of the extracellular domain of E-cadherin, possibly through interaction with the cytoskeleton. Many cadherins are regulated by phosphorylation, including N-cadherin and E-cadherin. N-cadherin is phosphorylated by c-Src at Tyr-820, Tyr-853, Tyr-860, Tyr-884, and Tyr-886. Phosphorylation of Tyr-860 can disrupt cadherin binding to β -catenin. Since many of these tyrosine sites are conserved in the cadherin family, phosphorylation of these sites may be critical for cadherin function.

Dilution

WB~~1:1000
IHC~~1:100~500
IF~~1:50~200

Format

Protein A Purified

Storage

Maintain refrigerated at 2-8°C for up to 6 months. For long term storage store at -20°C in small aliquots to prevent freeze-thaw cycles.

Precautions

Anti-E-Cadherin (Cytoplasmic) Antibody is for research use only and not for use in diagnostic or therapeutic procedures.

Shipping

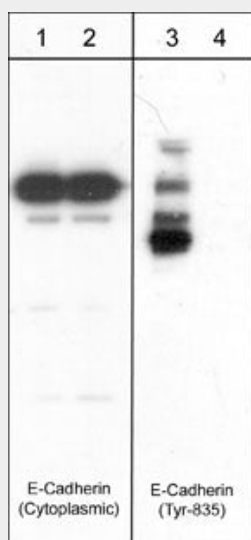
Blue Ice

Anti-E-Cadherin (Cytoplasmic) Antibody - Protocols

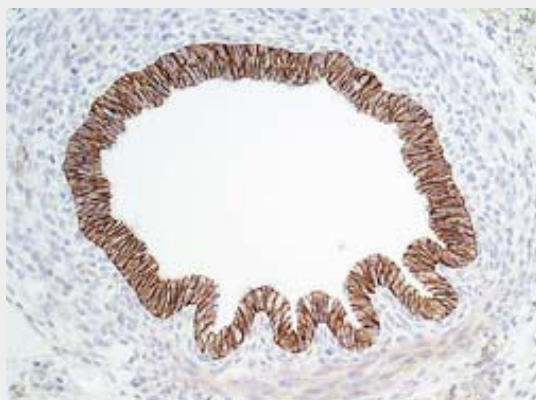
Provided below are standard protocols that you may find useful for product applications.

- [Western Blot](#)
- [Blocking Peptides](#)
- [Dot Blot](#)
- [Immunohistochemistry](#)
- [Immunofluorescence](#)
- [Immunoprecipitation](#)
- [Flow Cytometry](#)
- [Cell Culture](#)

Anti-E-Cadherin (Cytoplasmic) Antibody - Images



Western blot image of human A431 cells treated with pervanadate (1 mM) for 30 min (lanes 1 & 3) then treated with alkaline phosphatase (lanes 2 & 4). Blots were probed with anti-E-Cadherin (Cytoplasmic) and anti-N-Cadherin (Tyr-860)/E-Cadherin (Tyr-835) conserved site.



Formalin fixed, citric acid treated paraffin sections of embryonic Rat E16 intestines. Sections were probed with anti-E-Cadherin (CM1681) then anti-mouse:HRP before detection using DAB. (Images provided by Carl Hobbs and Dr. Pat Doherty at Wolfson Centre for Age-Related Diseases, King's College London).

Anti-E-Cadherin (Cytoplasmic) Antibody - Background

Cadherins are transmembrane glycoproteins vital in calcium-dependent cell-cell adhesion during tissue differentiation. Cadherins cluster to form foci of homophilic binding units. A key determinant to the strength of the cadherin-mediated adhesion may be by the juxtamembrane region in cadherins. This region induces clustering and also binds to the protein p120 catenin. The cytoplasmic region is highly conserved in sequence and has been shown experimentally to regulate the cell-cell binding function of the extracellular domain of E-cadherin, possibly through interaction with the cytoskeleton. Many cadherins are regulated by phosphorylation, including N-cadherin and E-cadherin. N-cadherin is phosphorylated by c-Src at Tyr-820, Tyr-853, Tyr-860, Tyr-884, and Tyr-886. Phosphorylation of Tyr-860 can disrupt cadherin binding to β -catenin. Since many of these tyrosine sites are conserved in the cadherin family, phosphorylation of these sites may be critical for cadherin function.