

**Anti- $\delta$ 1-Catenin (central region) Antibody**  
**Catalog # AN1683****Specification**

---

**Anti- $\delta$ 1-Catenin (central region) Antibody - Product Information**

Application	WB, IHC
Primary Accession	<a href="#">O60716</a>
Reactivity	Bovine
Host	Mouse
Clonality	Mouse Monoclonal
Isotype	IgG1
Calculated MW	108170

**Anti- $\delta$ 1-Catenin (central region) Antibody - Additional Information**Gene ID **1500****Other Names**

pp120 Src substrate, p120

**Target/Specificity**

Catenins have emerged as molecular sensors that integrate cell-cell junctions and cytoskeletal dynamics with signaling pathways that control morphogenesis and cell to cell communication.  $\delta$ 1-Catenin (p120 catenin) is a catenin family member which contains an N-terminal coiled-coil domain, a regulatory domain containing multiple phosphorylation sites, and a central Armadillo repeat domain.  $\delta$ 1-Catenin regulates E-cadherin turnover, and has both positive and negative effects on cadherin-mediated adhesion. Actin dynamics are also regulated by  $\delta$ 1-Catenin, which can modulate RhoA, Rac and cdc42 activity.  $\delta$ 1-Catenin is phosphorylated at multiple tyrosine, serine and threonine sites both in vitro and in vivo. High levels of  $\delta$ 1-Catenin phosphorylated at Tyr-228 are commonly seen in several carcinoma cell lines and after EGFR activation. Many other tyrosine sites are also phosphorylated in the N-terminal region including Tyr-96, Tyr-112, Tyr-280, and Tyr-302. In addition, Thr-310 and Thr-916 are constitutively phosphorylated in many cell types, however this phosphorylation may occur only in  $\delta$ 1-Catenin associated with the plasma membrane.

**Dilution**

WB~~1:1000

IHC~~1:100~500

**Format**

Protein A Purified

**Storage**

Maintain refrigerated at 2-8°C for up to 6 months. For long term storage store at -20°C in small aliquots to prevent freeze-thaw cycles.

**Precautions**

Anti- $\delta$ 1-Catenin (central region) Antibody is for research use only and not for use in diagnostic or therapeutic procedures.

**Shipping**

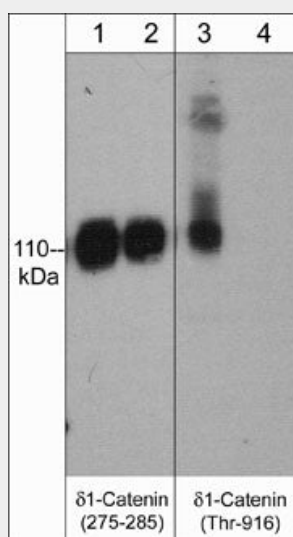
Blue Ice

## Anti- $\delta$ 1-Catenin (central region) Antibody - Protocols

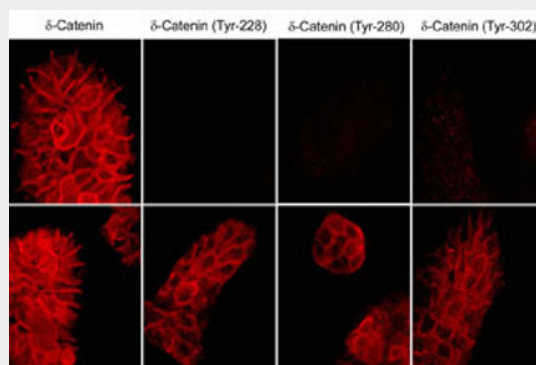
Provided below are standard protocols that you may find useful for product applications.

- [Western Blot](#)
- [Blocking Peptides](#)
- [Dot Blot](#)
- [Immunohistochemistry](#)
- [Immunofluorescence](#)
- [Immunoprecipitation](#)
- [Flow Cytometry](#)
- [Cell Culture](#)

## Anti- $\delta$ 1-Catenin (central region) Antibody - Images



Western blot analysis of  $\delta$ 1-Catenin phosphorylation in A431 cells stimulated with calyculin A (100 nM) for 30 min. (lanes 1 & 3) then the blot was treated with lambda phosphatase (lanes 2 & 4). The blots were probed with either mouse monoclonal anti- $\delta$ 1-Catenin (a.a. 275-285) (lanes 1 & 2) or rabbit polyclonal anti- $\delta$ 1-Catenin (Thr-916) (lanes 3 & 4).



Immunocytochemical labeling of  $\delta$ 1-Catenin in untreated (Top) or pervanadate-treated (bottom) A431 cells. The cells were labeled with mouse monoclonal  $\delta$ 1-Catenin (a.a. 275-285),  $\delta$ 1-Catenin (Tyr-228),  $\delta$ 1-Catenin (Tyr-280), or  $\delta$ 1-Catenin (Tyr-302) antibodies. The antibodies were detected

using donkey anti-mouse secondary antibodies conjugated to Cy3.

#### **Anti- $\delta$ 1-Catenin (central region) Antibody - Background**

Catenins have emerged as molecular sensors that integrate cell-cell junctions and cytoskeletal dynamics with signaling pathways that control morphogenesis and cell to cell communication.  $\delta$ 1-Catenin (p120 catenin) is a catenin family member which contains an N-terminal coiled-coil domain, a regulatory domain containing multiple phosphorylation sites, and a central Armadillo repeat domain.  $\delta$ 1-Catenin regulates E-cadherin turnover, and has both positive and negative effects on cadherin-mediated adhesion. Actin dynamics are also regulated by  $\delta$ 1-Catenin, which can modulate RhoA, Rac and cdc42 activity.  $\delta$ 1-Catenin is phosphorylated at multiple tyrosine, serine and threonine sites both in vitro and in vivo. High levels of  $\delta$ 1-Catenin phosphorylated at Tyr-228 are commonly seen in several carcinoma cell lines and after EGFR activation. Many other tyrosine sites are also phosphorylated in the N-terminal region including Tyr-96, Tyr-112, Tyr-280, and Tyr-302. In addition, Thr-310 and Thr-916 are constitutively phosphorylated in many cell types, however this phosphorylation may occur only in  $\delta$ 1-Catenin associated with the plasma membrane.