

**Anti-Caveolin-1 Antibody**  
**Catalog # AN1685****Specification**

---

**Anti-Caveolin-1 Antibody - Product Information**

Application	WB
Primary Accession	<a href="#">Q03135</a>
Reactivity	Bovine, Chicken
Host	Mouse
Clonality	Mouse Monoclonal
Isotype	IgG1
Calculated MW	20472

**Anti-Caveolin-1 Antibody - Additional Information**

Gene ID	857
<b>Other Names</b>	
caveolin1, vip21	

**Target/Specificity**

Caveolins are the primary structural components of the plasma membrane microdomains, caveolae. Three members of the caveolin family (caveolin-1, -2, and -3) have been identified, and each has distinct expression patterns. Caveolins are involved in diverse biological functions, including vesicular trafficking, cholesterol homeostasis, cell adhesion and apoptosis. Caveolins can interact with various signaling molecules, including G-proteins, receptor tyrosine kinases, PKCs, and Src family kinases. Phosphorylation at Tyr-14 is essential for caveolin association with SH2 or PTB domain-containing adaptor proteins, while phosphorylation at Ser-80 regulates caveolin binding to the ER membrane and entry into the secretory pathway.

**Format**

Protein A Purified

**Storage**

Maintain refrigerated at 2-8°C for up to 6 months. For long term storage store at -20°C in small aliquots to prevent freeze-thaw cycles.

**Precautions**

Anti-Caveolin-1 Antibody is for research use only and not for use in diagnostic or therapeutic procedures.

**Shipping**

Blue Ice

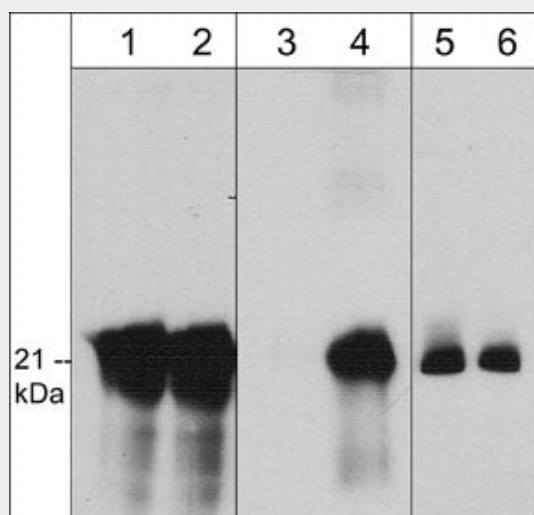
**Anti-Caveolin-1 Antibody - Protocols**

Provided below are standard protocols that you may find useful for product applications.

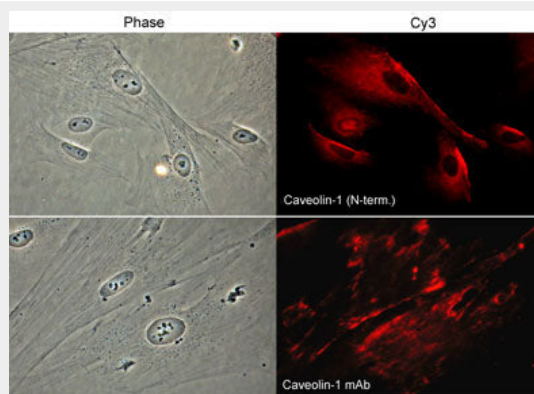
- [Western Blot](#)

- [Blocking Peptides](#)
- [Dot Blot](#)
- [Immunohistochemistry](#)
- [Immunofluorescence](#)
- [Immunoprecipitation](#)
- [Flow Cytometry](#)
- [Cell Culture](#)

## Anti-Caveolin-1 Antibody - Images



Western blot image of human A431 cells unstimulated (lanes 1, 3, & 5) or stimulated with pervanadate (1 mM) for 30 min (lanes 2, 4, & 6). The blots were probed with rabbit polyclonal caveolin-1 (N-term.) (lanes 1 & 2), mouse monoclonal caveolin-1 (Tyr-14) (lanes 3 & 4) or mouse monoclonal caveolin-1 (lanes 5 & 6).



Immunocytochemical labeling of caveolin-1 in paraformaldehyde-fixed and NP-40-permeabilized rabbit spleen fibroblasts. The cells were labeled with rabbit polyclonal Caveolin-1 (N-terminal region) and mouse monoclonal Caveolin-1 antibodies, and detected using appropriate secondary antibodies conjugated to Cy3. Phase contrast images (left) and immunofluorescent images (right).

## Anti-Caveolin-1 Antibody - Background

Caveolins are the primary structural components of the plasma membrane microdomains, caveolae. Three members of the caveolin family (caveolin-1, -2, and -3) have been identified, and each has distinct expression patterns. Caveolins are involved in diverse biological functions, including vesicular trafficking, cholesterol homeostasis, cell adhesion and apoptosis. Caveolins can interact with various signaling molecules, including G-proteins, receptor tyrosine kinases, PKCs, and

Src family kinases. Phosphorylation at Tyr-14 is essential for caveolin association with SH2 or PTB domain-containing adaptor proteins, while phosphorylation at Ser-80 regulates caveolin binding to the ER membrane and entry into the secretory pathway.