

Anti-c-Cbl (Tyr-700), Phosphospecific Antibody
Catalog # AN1689**Specification****Anti-c-Cbl (Tyr-700), Phosphospecific Antibody - Product Information**

Primary Accession	P22681
Reactivity	Bovine
Host	Mouse
Clonality	Mouse Monoclonal
Isotype	IgG1
Calculated MW	99633

Anti-c-Cbl (Tyr-700), Phosphospecific Antibody - Additional InformationGene ID **867****Other Names**

E3 ubiquitin ligase CBL, RING finger 55

Target/Specificity

c-Cbl proto-oncogene is a ubiquitously expressed cytoplasmic adaptor protein that is especially predominant in hematopoietic cells. c-Cbl possesses a highly conserved amino-terminal phosphotyrosine binding domain and a C3HC4 RING finger motif. c-Cbl is rapidly tyrosine phosphorylated in response to stimulation of a variety of cell-surface receptors and becomes associated with a number of intracellular signaling molecules such as protein tyrosine kinases, phosphatidylinositol 3 kinase (PI3K), Crk and 14-3-3 proteins. In human cancer tissues, c-Cbl is frequently tyrosine phosphorylated in a tumor-specific manner. Src-family kinases primarily phosphorylate c-Cbl at Tyr-700, Tyr-731, and Tyr-774. These sites of phosphorylation provide docking sites for downstream signaling components, such as Grb-2, PI3K, and Fyn.

Format

Protein A Purified

Storage

Maintain refrigerated at 2-8°C for up to 6 months. For long term storage store at -20°C in small aliquots to prevent freeze-thaw cycles.

Precautions

Anti-c-Cbl (Tyr-700), Phosphospecific Antibody is for research use only and not for use in diagnostic or therapeutic procedures.

Shipping

Blue Ice

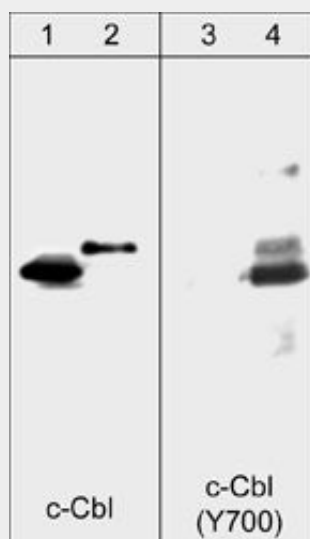
Anti-c-Cbl (Tyr-700), Phosphospecific Antibody - Protocols

Provided below are standard protocols that you may find useful for product applications.

- [Western Blot](#)

- [Blocking Peptides](#)
- [Dot Blot](#)
- [Immunohistochemistry](#)
- [Immunofluorescence](#)
- [Immunoprecipitation](#)
- [Flow Cytometry](#)
- [Cell Culture](#)

Anti-c-Cbl (Tyr-700), Phosphospecific Antibody - Images



Western blot analysis of human Jurkat cells untreated (lanes 1 & 3) or treated with pervanadate (1 mM) for 30 minutes (lanes 2 & 4). The blot was probed with anti-c-Cbl (CM1591; lanes 1 & 2) or anti-c-Cbl (Tyr-700) (CM1611; lanes 3 & 4).

Anti-c-Cbl (Tyr-700), Phosphospecific Antibody - Background

c-Cbl proto-oncogene is a ubiquitously expressed cytoplasmic adaptor protein that is especially predominant in hematopoietic cells. c-Cbl possesses a highly conserved amino-terminal phosphotyrosine binding domain and a C3HC4 RING finger motif. c-Cbl is rapidly tyrosine phosphorylated in response to stimulation of a variety of cell-surface receptors and becomes associated with a number of intracellular signaling molecules such as protein tyrosine kinases, phosphatidylinositol 3 kinase (PI3K), Crk and 14-3-3 proteins. In human cancer tissues, c-Cbl is frequently tyrosine phosphorylated in a tumor-specific manner. Src-family kinases primarily phosphorylate c-Cbl at Tyr-700, Tyr-731, and Tyr-774. These sites of phosphorylation provide docking sites for downstream signaling components, such as Grb-2, PI3K, and Fyn.