

Anti-CD63 (Extracellular region) Antibody
Catalog # AN1700**Specification**

Anti-CD63 (Extracellular region) Antibody - Product Information

Application	WB, IHC
Primary Accession	P08962
Host	Mouse
Clonality	Mouse Monoclonal
Isotype	IgG1
Calculated MW	25637

Anti-CD63 (Extracellular region) Antibody - Additional InformationGene ID **967****Other Names**

CD63 antigen, Granulophysin, Lysosomal-associated membrane protein 3, LAMP-3, Melanoma-associated antigen ME491 OMA81H, Ocular melanoma-associated antigen, Tetraspanin-30, Tspan-30, MLA1, TSPAN30

Target/Specificity

Tetraspanins comprise a large superfamily of cell surface-associated membrane proteins with four transmembrane domains. On cell membranes, tetraspanins form networks of various proteins called tetraspanin-enriched microdomains (TEMs). CD63 was the first characterized tetraspanin and it is found in TEMs, as well as late endosomes and lysosomes. In late endosomes, CD63 is enriched on the intraluminal vesicles, and can be secreted as exosomes through fusion of endosomes with the plasma membrane. The complex localization pattern of CD63 suggests that its intracellular trafficking and distribution must be tightly regulated. CD63 contains N-link glycosylation sites that produce diverse CD63 molecules that range from 30 to 60 kDa depending on cell type. CD63 is an important exosomal marker in cancer cells, and may be involved in cancer progression and metastasis.

Dilution

WB~~1:1000
IHC~~1:100~500

Format

Protein G Purified

Storage

Maintain refrigerated at 2-8°C for up to 6 months. For long term storage store at -20°C in small aliquots to prevent freeze-thaw cycles.

Precautions

Anti-CD63 (Extracellular region) Antibody is for research use only and not for use in diagnostic or therapeutic procedures.

Shipping

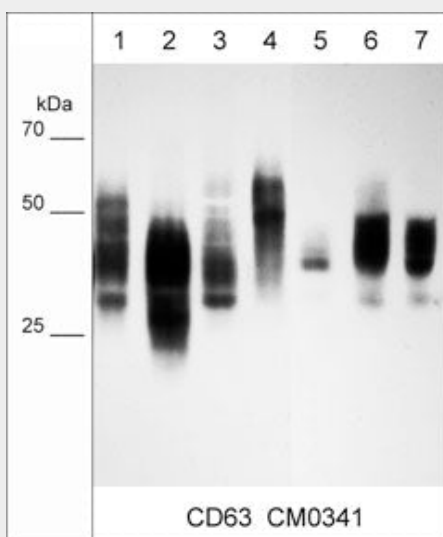
Blue Ice

Anti-CD63 (Extracellular region) Antibody - Protocols

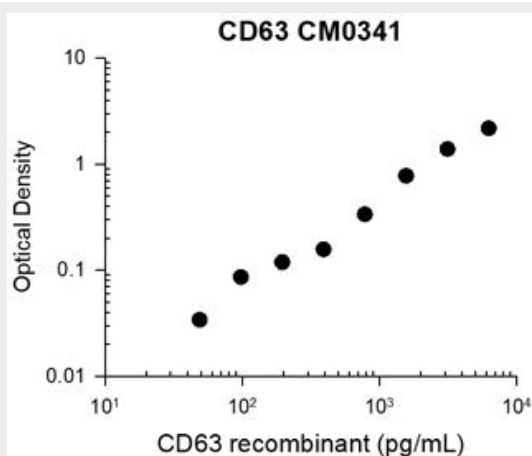
Provided below are standard protocols that you may find useful for product applications.

- [Western Blot](#)
- [Blocking Peptides](#)
- [Dot Blot](#)
- [Immunohistochemistry](#)
- [Immunofluorescence](#)
- [Immunoprecipitation](#)
- [Flow Cytometry](#)
- [Cell Culture](#)

Anti-CD63 (Extracellular region) Antibody - Images



Immunocytochemical labeling of CD63 in paraformaldehyde fixed human MeWo melanoma cells. The cells were labeled with mouse monoclonal CD63 (CM0341). The antibody was detected using goat anti-mouse Ig DyLight® 594.



Representative Standard Curve using mouse monoclonal anti-CD63 (CM0341) for ELISA capture of human recombinant CD63 extracellular region with His-tag. Capture was detected by using an anti-His-tag antibody followed by appropriate secondary antibody conjugated to HRP.

Anti-CD63 (Extracellular region) Antibody - Background

Tetraspanins comprise a large superfamily of cell surface-associated membrane proteins with four transmembrane domains. On cell membranes, tetraspanins form networks of various proteins called tetraspanin-enriched microdomains (TEMs). CD63 was the first characterized tetraspanin and it is found in TEMs, as well as late endosomes and lysosomes. In late endosomes, CD63 is enriched on the intraluminal vesicles, and can be secreted as exosomes through fusion of endosomes with the plasma membrane. The complex localization pattern of CD63 suggests that its intracellular trafficking and distribution must be tightly regulated. CD63 contains N-link glycosylation sites that produce diverse CD63 molecules that range from 30 to 60 kDa depending on cell type. CD63 is an important exosomal marker in cancer cells, and may be involved in cancer progression and metastasis.