

**Anti-CD147/Emmprin/Basigin (Extracellular region) Antibody**  
**Catalog # AN1704****Specification****Anti-CD147/Emmprin/Basigin (Extracellular region) Antibody - Product Information**

Application	WB, IHC
Primary Accession	<a href="#">P35613</a>
Host	Mouse
Clonality	Mouse Monoclonal
Isotype	IgG2a
Calculated MW	42200

**Anti-CD147/Emmprin/Basigin (Extracellular region) Antibody - Additional Information**

Gene ID 682

**Other Names**

Basigin, 5F7, Collagenase stimulatory factor Extracellular matrix metalloproteinase, EMMPRIN, Leukocyte activation antigen M6, OK blood group antigen, Tumor cell-derived collagenase stimulatory factor, TCSF, CD147, BSG

**Target/Specificity**

CD147 (Basigin/EMMPRIN) is a type I integral membrane receptor protein belonging to the immunoglobulin superfamily. CD147 is a glycosylated protein with four known isoforms with isoform 2 being the most abundantly expressed. In many cancers, CD147 is overexpressed and stimulates the secretion of extracellular matrix metalloproteinases by tumor fibroblasts, which can promote tumor progression. CD147 is co-expressed with the amino acid transporter, CD98h, in metabolically active cells such as lymphocytes, macrophages, and tumor cells. CD147 interaction with caveolin and cyclophilins regulates its functions, and this protein may function outside of tumor cells through cell shedding and microvesicle release.

**Dilution**

WB~~1:1000  
IHC~~1:100~500

**Format**

Protein G Purified

**Storage**

Maintain refrigerated at 2-8°C for up to 6 months. For long term storage store at -20°C in small aliquots to prevent freeze-thaw cycles.

**Precautions**

Anti-CD147/Emmprin/Basigin (Extracellular region) Antibody is for research use only and not for use in diagnostic or therapeutic procedures.

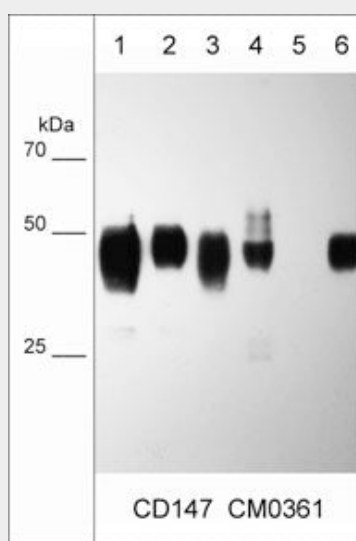
**Shipping**

Blue Ice

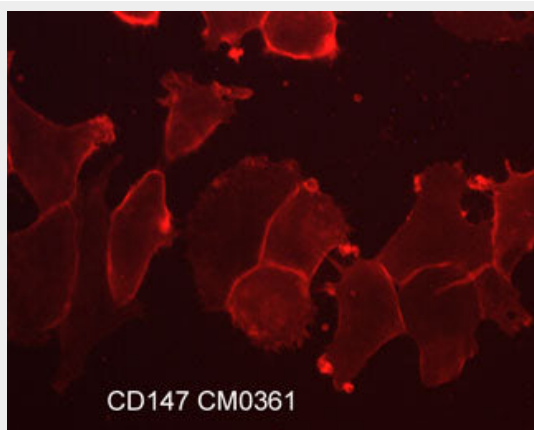
**Anti-CD147/Emmprin/Basigin (Extracellular region) Antibody - Protocols**

Provided below are standard protocols that you may find useful for product applications.

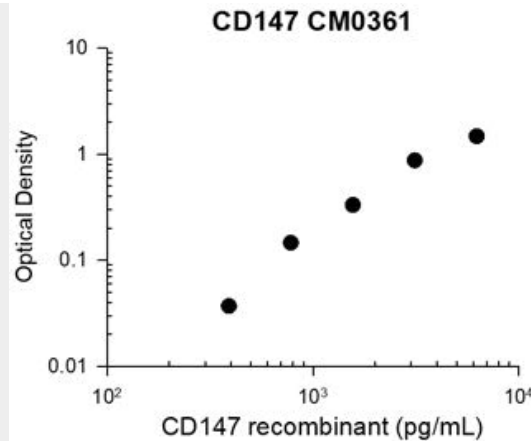
- [Western Blot](#)
- [Blocking Peptides](#)
- [Dot Blot](#)
- [Immunohistochemistry](#)
- [Immunofluorescence](#)
- [Immunoprecipitation](#)
- [Flow Cytometry](#)
- [Cell Culture](#)

**Anti-CD147/Emmprin/Basigin (Extracellular region) Antibody - Images**

Western blot of lysates from BEAS normal lung cells (lane 1), NCIH28 mesothelial cells (lane 2), NCI-H1299 lung cancer cells (lane 3), LNCaP prostate cancer cells (lane 4), MCF7 breast cancer cells (lane 5), and A431 skin adenocarcinoma (lane 6). The blot was probed with mouse monoclonal anti-CD147 (CM0361) at 1:1000.



Immunocytochemical labeling of CD147 in paraformaldehyde fixed human NCI-H1915 lung carcinoma cells. The cells were labeled with mouse monoclonal anti-CD147 (CM0361). The antibody was detected using goat anti-mouse Ig:DyLight® 594.



Representative Standard Curve using mouse monoclonal CD147 (CM0361) for ELISA capture of human recombinant CD147 extracellular region with a His tag. Capture was detected using anti-His tag antibody followed by appropriate secondary antibody HRP conjugate.

#### **Anti-CD147/Emmprin/Basigin (Extracellular region) Antibody - Background**

CD147 (Basigin/EMMPRIN) is a type I integral membrane receptor protein belonging to the immunoglobulin superfamily. CD147 is a glycosylated protein with four known isoforms with isoform 2 being the most abundantly expressed. In many cancers, CD147 is overexpressed and stimulates the secretion of extracellular matrix metalloproteinases by tumor fibroblasts, which can promote tumor progression. CD147 is co-expressed with the amino acid transporter, CD98h, in metabolically active cells such as lymphocytes, macrophages, and tumor cells. CD147 interaction with caveolin and cyclophilins regulates its functions, and this protein may function outside of tumor cells through cell shedding and microvesicle release.