

Anti-Cdk5 Antibody
Catalog # AN1715**Specification**

Anti-Cdk5 Antibody - Product Information

Application	WB, IHC
Primary Accession	Q00535
Reactivity	Bovine
Host	Mouse
Clonality	Mouse Monoclonal
Isotype	IgG1
Calculated MW	33304

Anti-Cdk5 Antibody - Additional Information

Gene ID	1020
Other Names	
PSSALRE, TPKII	

Target/Specificity

Cyclin-dependent kinases (Cdks) are a family of serine/threonine kinases that require association with regulatory subunits known as cyclins for activation. In addition, post-translational phosphorylation and dephosphorylation events regulate Cdk activity. Phosphorylation of Thr-160 in the T loop by Cdk-activating kinase (CAK) is an obligatory step in kinase activation. By contrast, phosphorylation of the Thr-14 and Tyr-15 residues by the Wee1 family of dual specificity kinases is inhibitory for the Cdks, and dephosphorylation of these residues by the Cdc25 family of phosphatases coincides with Cdk activation. Alternatively, Cdk5 appears to require different mechanisms for activation. This Cdk is activated through association with specific activators, including p35, p39, and p67. Cdk5 is primarily activated in neuronal cells, and only c-Abl kinase, rather than Wee family members, have been shown to phosphorylate Tyr-15 to regulate its activity.

Dilution

WB~~1:1000
IHC~~1:100~500

Format

Protein A Purified

Storage

Maintain refrigerated at 2-8°C for up to 6 months. For long term storage store at -20°C in small aliquots to prevent freeze-thaw cycles.

Precautions

Anti-Cdk5 Antibody is for research use only and not for use in diagnostic or therapeutic procedures.

Shipping

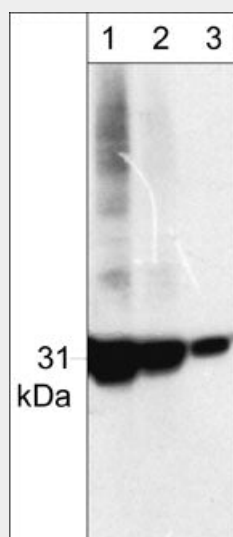
Blue Ice

Anti-Cdk5 Antibody - Protocols

Provided below are standard protocols that you may find useful for product applications.

- [Western Blot](#)
- [Blocking Peptides](#)
- [Dot Blot](#)
- [Immunohistochemistry](#)
- [Immunofluorescence](#)
- [Immunoprecipitation](#)
- [Flow Cytometry](#)
- [Cell Culture](#)

Anti-Cdk5 Antibody - Images



Western blot analysis of human HeLa cells. The blot was probed with anti-Cdk5 (CM2361) antibody at 1:250 (lane 1), 1:1000 (lane 2), and 1:4000 (lane 3).

Anti-Cdk5 Antibody - Background

Cyclin-dependent kinases (Cdks) are a family of serine/threonine kinases that require association with regulatory subunits known as cyclins for activation. In addition, post-translational phosphorylation and dephosphorylation events regulate Cdk activity. Phosphorylation of Thr-160 in the T loop by Cdk-activating kinase (CAK) is an obligatory step in kinase activation. By contrast, phosphorylation of the Thr-14 and Tyr-15 residues by the Wee1 family of dual specificity kinases is inhibitory for the Cdks, and dephosphorylation of these residues by the Cdc25 family of phosphatases coincides with Cdk activation. Alternatively, Cdk5 appears to require different mechanisms for activation. This Cdk is activated through association with specific activators, including p35, p39, and p67. Cdk5 is primarily activated in neuronal cells, and only c-Abl kinase, rather than Wee family members, have been shown to phosphorylate Tyr-15 to regulate its activity.