

**Anti-Connexin-43 (C-terminal region) Antibody**  
**Catalog # AN1720****Specification****Anti-Connexin-43 (C-terminal region) Antibody - Product Information**

Application	WB
Primary Accession	<a href="#">P17302</a>
Reactivity	Bovine, Chicken
Host	Mouse
Clonality	Mouse Monoclonal
Isotype	IgG1
Calculated MW	43008

**Anti-Connexin-43 (C-terminal region) Antibody - Additional Information**

Gene ID 2697

**Other Names**

Gap junction alpha-1 43 GJA1 CXA1

**Target/Specificity**

Connexin-43 (Cx43, CXA1, Gap Junction  $\alpha$ 1) is a member of the large family of gap junction proteins. Connexins assemble as a hexamer and are transported to the plasma membrane to create a hemichannel that can associate with hemichannels on nearby cells to create cell-to-cell channels that cluster together to form gap junctions. Gap junction communication is critical for cell to cell communication during development and regulation of cell growth. Phosphorylation of connexin-43 is important in regulating both the assembly and the function of gap junctions. PKC phosphorylates Ser-368 in connexin-43 after activation of cells with phorbol esters. This phosphorylation event decreases cell-to-cell communication. In addition, the tyrosine kinase, c-Src, can interact with and phosphorylate Tyr-265 in connexin-43 leading to inhibition of gap junction communication. Thus, connexin-43 phosphorylation may be an important mode for regulating gap junctional communication.

**Dilution**

WB~~1:1000

**Format**

Antigen Affinity Purified

**Storage**

Maintain refrigerated at 2-8°C for up to 6 months. For long term storage store at -20°C in small aliquots to prevent freeze-thaw cycles.

**Precautions**

Anti-Connexin-43 (C-terminal region) Antibody is for research use only and not for use in diagnostic or therapeutic procedures.

**Shipping**

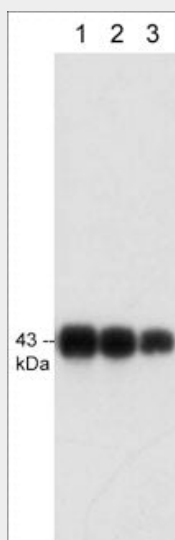
Blue Ice

## Anti-Connexin-43 (C-terminal region) Antibody - Protocols

Provided below are standard protocols that you may find useful for product applications.

- [Western Blot](#)
- [Blocking Peptides](#)
- [Dot Blot](#)
- [Immunohistochemistry](#)
- [Immunofluorescence](#)
- [Immunoprecipitation](#)
- [Flow Cytometry](#)
- [Cell Culture](#)

## Anti-Connexin-43 (C-terminal region) Antibody - Images



Western blot analysis of connexin-43 expression in adult mouse brain (lanes 1-3). The blots were probed with mouse monoclonal anti-connexin-43 at 1:250 (lane 1), 1:500 (lane 2), and 1:1000 (lane 3).

## Anti-Connexin-43 (C-terminal region) Antibody - Background

Connexin-43 (Cx43, CXA1, Gap Junction  $\alpha$ 1) is a member of the large family of gap junction proteins. Connexins assemble as a hexamer and are transported to the plasma membrane to create a hemichannel that can associate with hemichannels on nearby cells to create cell-to-cell channels that cluster together to form gap junctions. Gap junction communication is critical for cell to cell communication during development and regulation of cell growth. Phosphorylation of connexin-43 is important in regulating both the assembly and the function of gap junctions. PKC phosphorylates Ser-368 in connexin-43 after activation of cells with phorbol esters. This phosphorylation event decreases cell-to-cell communication. In addition, the tyrosine kinase, c-Src, can interact with and phosphorylate Tyr-265 in connexin-43 leading to inhibition of gap junction communication. Thus, connexin-43 phosphorylation may be an important mode for regulating gap junctional communication.