

Anti-Cyclophilin B Antibody
Catalog # AN1738**Specification**

Anti-Cyclophilin B Antibody - Product Information

Application	WB, IHC
Primary Accession	P23284
Host	Mouse
Clonality	Mouse Monoclonal
Isotype	IgG1
Calculated MW	23743

Anti-Cyclophilin B Antibody - Additional InformationGene ID **5479****Other Names**

Peptidyl-prolyl cis-trans isomerase B, PPIase B, CYP-S1, Cyclophilin B, Rotamase B, S-cyclophilin, SCYLP, PPIB, CYPB

Target/Specificity

Cyclophilins are a highly conserved family of peptidylprolyl cis-trans-isomerases (PPI) that are targets of the immunosuppressant drug cyclosporin A. These isomerases have been proposed to aid in protein folding. Cyclophilin B (PPIB) is an ER-localized chaperone protein that associates with type I procollagen, and facilitates procollagen sorting and transport through the secretory compartment. Mutations in the cyclophilin B gene lead to aberrant biosynthesis of type I procollagen, and osteogenesis imperfecta, a disorder characterized by bone fragility. Cyclophilin B has also been implicated as a marker in several cancers, including glioblastomas, neuroblastomas, and gastric cancers. In gastric cancer, Stat3 suppression of miR-520d-5p leads to upregulation of its downstream target cyclophilin B, and enables the growth and survival of these cancer cells.

DilutionWB~~1:1000
IHC~~1:100~500**Format**

Protein G Purified

Storage

Maintain refrigerated at 2-8°C for up to 6 months. For long term storage store at -20°C in small aliquots to prevent freeze-thaw cycles.

Precautions

Anti-Cyclophilin B Antibody is for research use only and not for use in diagnostic or therapeutic procedures.

Shipping

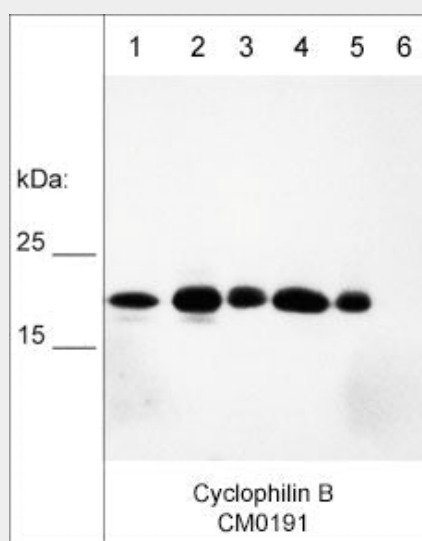
Blue Ice

Anti-Cyclophilin B Antibody - Protocols

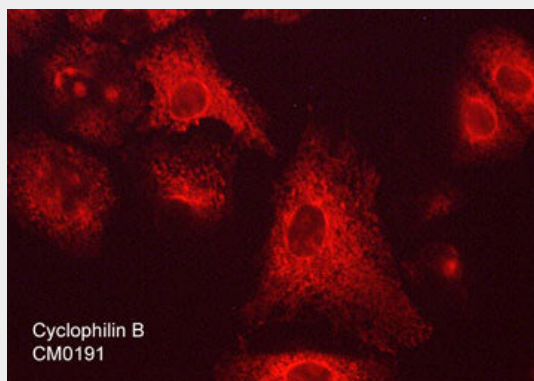
Provided below are standard protocols that you may find useful for product applications.

- [Western Blot](#)
- [Blocking Peptides](#)
- [Dot Blot](#)
- [Immunohistochemistry](#)
- [Immunofluorescence](#)
- [Immunoprecipitation](#)
- [Flow Cytometry](#)
- [Cell Culture](#)

Anti-Cyclophilin B Antibody - Images



Western blot analysis of human LNCaP (lane 1), MCF7 (lane 2), MDA-MB-231 (lane 3), and MeWo (lane 4) cell lysates, as well as human recombinant full-length cyclophilin B (lane 5) and cyclophilin A (lane 6). The blot was probed with mouse monoclonal anti-cyclophilin B (CM0191) at 1:500.



Immunocytochemical labeling of cyclophilin B in methanol:acetone (1:1) fixed human A549 lung cancer cells. The cells were labeled with mouse monoclonal anti-cyclophilin B (CM0191). The antibody was detected using goat anti-mouse DyLight® 594.

Anti-Cyclophilin B Antibody - Background

Cyclophilins are a highly conserved family of peptidylprolyl cis-trans-isomerases (PPI) that are

targets of the immunosuppressant drug cyclosporin A. These isomerases have been proposed to aid in protein folding. Cyclophilin B (PPIB) is an ER-localized chaperone protein that associates with type I procollagen, and facilitates procollagen sorting and transport through the secretory compartment. Mutations in the cyclophilin B gene lead to aberrant biosynthesis of type I procollagen, and osteogenesis imperfecta, a disorder characterized by bone fragility. Cyclophilin B has also been implicated as a marker in several cancers, including glioblastomas, neuroblastomas, and gastric cancers. In gastric cancer, Stat3 suppression of miR-520d-5p leads to upregulation of its downstream target cyclophilin B, and enables the growth and survival of these cancer cells.