

Anti-mDia2 (C-terminal region) Antibody
Catalog # AN1741**Specification**

Anti-mDia2 (C-terminal region) Antibody - Product Information

Primary Accession	O9NSV4
Reactivity	Bovine
Host	Rabbit
Clonality	Rabbit Polyclonal
Isotype	IgG
Calculated MW	136926

Anti-mDia2 (C-terminal region) Antibody - Additional Information

Gene ID **81624**

Other Names

Diap3, Dia2, Drf3, formin

Target/Specificity

Formins include several families of proteins that regulate actin cytoskeletal dynamics via two conserved formin homology domains, FH1 and FH2. The FH1 region contains poly-proline stretches that promote interactions with profilin. The FH2 domain, located C-terminally to the FH1 domain, is highly conserved in formin proteins and possesses actin nucleation and polymerization activities. Through cooperation of FH1 and FH2, formins construct actin-based structures comprising linear, unbranched filaments that are used in stress fibers, actin cables, microspikes, and contractile rings. A subgroup of the formins is the diaphanous (Dia) family, which includes mDia1 (Diap1), mDia2 (Diap3), and mDia3 (Diap2). The mDia2 protein has been implicated in cell migration and cytokinesis. This Dia protein can nucleate actin polymerization, as well as bind and stabilize microtubules. mDia2 may also have functions in the nucleus, since it is continually shuttled between the cytoplasm and nucleus

Format

Antigen Affinity Purified

Storage

Maintain refrigerated at 2-8°C for up to 6 months. For long term storage store at -20°C in small aliquots to prevent freeze-thaw cycles.

Precautions

Anti-mDia2 (C-terminal region) Antibody is for research use only and not for use in diagnostic or therapeutic procedures.

Shipping

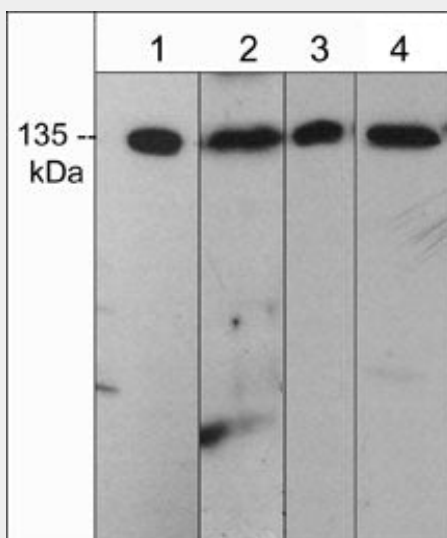
Blue Ice

Anti-mDia2 (C-terminal region) Antibody - Protocols

Provided below are standard protocols that you may find useful for product applications.

- [Western Blot](#)
- [Blocking Peptides](#)
- [Dot Blot](#)
- [Immunohistochemistry](#)
- [Immunofluorescence](#)
- [Immunoprecipitation](#)
- [Flow Cytometry](#)
- [Cell Culture](#)

Anti-mDia2 (C-terminal region) Antibody - Images



Western blot analysis of mDia2 expression in rat PC12 (lane 1), human A431 (lane 2), mouse brain (lane 3), and rabbit spleen fibroblasts (lane 4). The blots were probed with anti-mDia2 (C-terminal region) at 1:500.

Anti-mDia2 (C-terminal region) Antibody - Background

Formins include several families of proteins that regulate actin cytoskeletal dynamics via two conserved formin homology domains, FH1 and FH2. The FH1 region contains poly-proline stretches that promote interactions with profilin. The FH2 domain, located C-terminally to the FH1 domain, is highly conserved in formin proteins and possesses actin nucleation and polymerization activities. Through cooperation of FH1 and FH2, formins construct actin-based structures comprising linear, unbranched filaments that are used in stress fibers, actin cables, microspikes, and contractile rings. A subgroup of the formins is the diaphanous (Dia) family, which includes mDia1 (Diap1), mDia2 (Diap3), and mDia3 (Diap2). The mDia2 protein has been implicated in cell migration and cytokinesis. This Dia protein can nucleate actin polymerization, as well as bind and stabilize microtubules. mDia2 may also have functions in the nucleus, since it is continually shuttled between the cytoplasm and nucleus