

Anti-EB3 (central region) Antibody
Catalog # AN1757**Specification**

Anti-EB3 (central region) Antibody - Product Information

Primary Accession	Q9UPY8
Reactivity	Bovine
Host	Rabbit
Clonality	Rabbit Polyclonal
Isotype	IgG
Calculated MW	31982

Anti-EB3 (central region) Antibody - Additional InformationGene ID **22924****Other Names**

Microtubule RP/EB, MAPRE3, APC, EB3, End-binding. RP3

Target/Specificity

The microtubule (MT) plus-end is a crucial site for the regulation of MT dynamics and interactions by several groups of plus-end tracking proteins (+TIPs). These +TIPs form comet-like accumulations at the plus ends of MTs to regulate MT dynamics and interactions with organelles and macromolecular complexes. The +TIPs include diverse groups of proteins, such as motor and nonmotor proteins, MT polymerases and depolymerases as well as various regulatory and adaptor proteins. The CLIP-associated protein (CLASP) family includes CLASP1 and CLASP2 proteins, which are expressed as long (α) and short (β) isoforms. These +TIPs contain an N-terminal TOG domain, multiple TOG-like domains, and a basic and serine-rich motif (SxIP). The TOG domain facilitates interaction with tubulin dimers, while the SxIP motif promotes interaction with EB1 and MTs. A C-terminal domain is involved in interaction with CLIPs, as well as several other proteins. CLASPs are MT stabilizing factors that localize to mitotic spindles, kinetochores, and the midbody. CLASPs are important for cell division, and may regulate cell migration and neuronal growth cone motility.

Storage

Maintain refrigerated at 2-8°C for up to 6 months. For long term storage store at -20°C in small aliquots to prevent freeze-thaw cycles.

Precautions

Anti-EB3 (central region) Antibody is for research use only and not for use in diagnostic or therapeutic procedures.

Shipping

Blue Ice

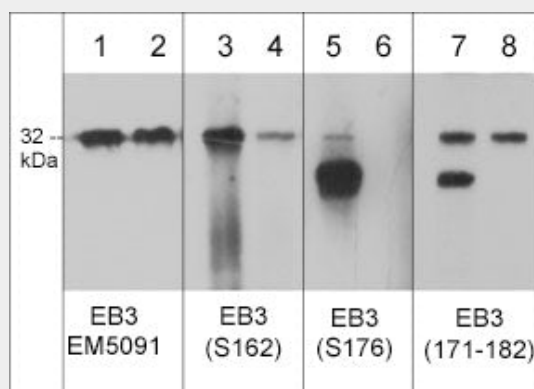
Anti-EB3 (central region) Antibody - Protocols

Provided below are standard protocols that you may find useful for product applications.

- [Western Blot](#)

- [Blocking Peptides](#)
- [Dot Blot](#)
- [Immunohistochemistry](#)
- [Immunofluorescence](#)
- [Immunoprecipitation](#)
- [Flow Cytometry](#)
- [Cell Culture](#)

Anti-EB3 (central region) Antibody - Images



Western blot analysis of adult mouse brain untreated (lanes 1, 3, 5, & 7) or treated with lambda phosphatase (lanes 2, 4, 6, & 8). The blots were probed with rat monoclonal anti-EB3 (EM5091) (lanes 1 & 2), and rabbit polyclonals anti-EB3 (Ser-162) (lanes 3 & 4), anti-EB3 (Ser-176) (lanes 5 & 6), and anti-EB3 (a.a. 171-182) (lanes 7 & 8).

Anti-EB3 (central region) Antibody - Background

The microtubule (MT) plus-end is a crucial site for the regulation of MT dynamics and interactions by several groups of plus-end tracking proteins (+TIPs). These +TIPs form comet-like accumulations at the plus ends of MTs to regulate MT dynamics and interactions with organelles and macromolecular complexes. The +TIPs include diverse groups of proteins, such as motor and nonmotor proteins, MT polymerases and depolymerases as well as various regulatory and adaptor proteins. The CLIP-associated protein (CLASP) family includes CLASP1 and CLASP2 proteins, which are expressed as long (α) and short (β) isoforms. These +TIPs contain an N-terminal TOG domain, multiple TOG-like domains, and a basic and serine-rich motif (SxIP). The TOG domain facilitates interaction with tubulin dimers, while the SxIP motif promotes interaction with EB1 and MTs. A C-terminal domain is involved in interaction with CLIPs, as well as several other proteins. CLASPs are MT stabilizing factors that localize to mitotic spindles, kinetochores, and the midbody. CLASPs are important for cell division, and may regulate cell migration and neuronal growth cone motility.