

Anti-Early Endosome Antigen 1 (EEA1) Antibody
Catalog # AN1760**Specification****Anti-Early Endosome Antigen 1 (EEA1) Antibody - Product Information**

Application	WB
Primary Accession	Q15075
Reactivity	Bovine
Host	Mouse
Clonality	Mouse Monoclonal
Isotype	IgG1
Calculated MW	162466

Anti-Early Endosome Antigen 1 (EEA1) Antibody - Additional InformationGene ID **8411****Target/Specificity**

Early endosomes are cellular compartments that receive endocytosed materials and sort them for vesicular transport to late endosomes and lysosomes, as well as for recycling material to the plasma membrane. Early endosome antigen 1 (EEA1) is an early endosomal protein that contains an N-terminal zinc finger motif, a cys-rich C-terminal metal-binding finger, and multiple sites for N-glycosylation, phosphorylation, and N-myristoylation. Expression of EEA1 mRNA is observed in skeletal muscle, heart, brain, lung, liver, and pancreas. Immunoblot analysis shows that EEA1 is a 180-kDa protein localized in membrane and cytosolic fractions. Immunofluorescence microscopy shows that EEA1 colocalizes with transferrin and with RAB5 in early endosomes, but not with RAB7 in late endosomes.

Dilution

WB~~1:1000

Storage

Maintain refrigerated at 2-8°C for up to 6 months. For long term storage store at -20°C in small aliquots to prevent freeze-thaw cycles.

Precautions

Anti-Early Endosome Antigen 1 (EEA1) Antibody is for research use only and not for use in diagnostic or therapeutic procedures.

Shipping

Blue Ice

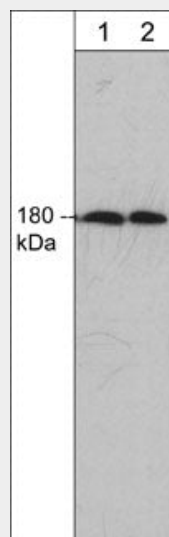
Anti-Early Endosome Antigen 1 (EEA1) Antibody - Protocols

Provided below are standard protocols that you may find useful for product applications.

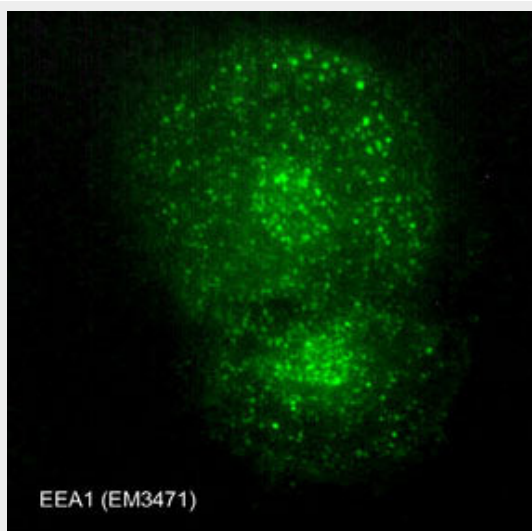
- [Western Blot](#)
- [Blocking Peptides](#)
- [Dot Blot](#)

- [Immunohistochemistry](#)
- [Immunofluorescence](#)
- [Immunoprecipitation](#)
- [Flow Cytometry](#)
- [Cell Culture](#)

Anti-Early Endosome Antigen 1 (EEA1) Antibody - Images



Western blot of adult mouse brain tissue lysate. The blot was probed with mouse monoclonal anti-EEA1 antibody at 1:500 (lane 1) or 1:1000 (lane 2).



Immunocytochemical labeling of EEA1 in paraformaldehyde-fixed and NP40-permeabilized A7r5 cells. The cells were labeled with mouse monoclonal EEA1 (EM3471). The antibody was detected using goat anti-mouse DyLight® 488.

Anti-Early Endosome Antigen 1 (EEA1) Antibody - Background

Early endosomes are cellular compartments that receive endocytosed materials and sort them for vesicular transport to late endosomes and lysosomes, as well as for recycling material to the plasma membrane. Early endosome antigen 1 (EEA1) is an early endosomal protein that contains an N-terminal zinc finger motif, a cys-rich C-terminal metal-binding finger, and multiple sites for N-glycosylation, phosphorylation, and N-myristoylation. Expression of EEA1 mRNA is observed in

skeletal muscle, heart, brain, lung, liver, and pancreas. Immunoblot analysis shows that EEA1 is a 180-kDa protein localized in membrane and cytosolic fractions. Immunofluorescence microscopy shows that EEA1 colocalizes with transferrin and with RAB5 in early endosomes, but not with RAB7 in late endosomes.