

**Anti-EphA4 (Tyr-602) [conserved site], Phosphospecific Antibody**  
**Catalog # AN1779****Specification****Anti-EphA4 (Tyr-602) [conserved site], Phosphospecific Antibody - Product Information**

Application	WB
Primary Accession	<a href="#">P54764</a>
Reactivity	Bovine, Chicken
Host	Rabbit
Clonality	Rabbit Polyclonal
Isotype	IgG
Calculated MW	109860

**Anti-EphA4 (Tyr-602) [conserved site], Phosphospecific Antibody - Additional Information**

Gene ID	2043
<b>Other Names</b>	
SEK, Eph	

**Target/Specificity**

The Eph family of Receptor tyrosine kinases and their Ephrin ligands are important for cell positioning and morphogenesis during development. Eph receptors are classified into 10 EphA and 6 EphB receptors, which preferentially bind to the type A and type B ephrins, respectively. The EphA4 receptor can inhibit axon outgrowth and has roles in regulating axon projections during neural development. EphA4 signaling pathways require its kinase activity and involve binding and activation of Rho-GTPase guanine nucleotide-exchange factors (GEFs). EphA4 activation leads to autophosphorylation of Tyr-596 and Tyr-602, and the conserved sites in EphA2 are required for binding to the GEFs, Vav2 and Vav3, and ephrin-induced cell migration. The Tyr-779 site in the kinase domain is also phosphorylated in vivo and may regulate kinase activity. Activated EphA4 leads to Src kinase phosphorylation of the GEF, ephexin-1, and this activates RhoA. Thus, EphA4 signaling involves complex tyrosine phosphorylation in its cytoplasmic region along with interaction with several GEFs.

**Dilution**

WB~~1:1000

**Storage**

Maintain refrigerated at 2-8°C for up to 6 months. For long term storage store at -20°C in small aliquots to prevent freeze-thaw cycles.

**Precautions**

Anti-EphA4 (Tyr-602) [conserved site], Phosphospecific Antibody is for research use only and not for use in diagnostic or therapeutic procedures.

**Shipping**

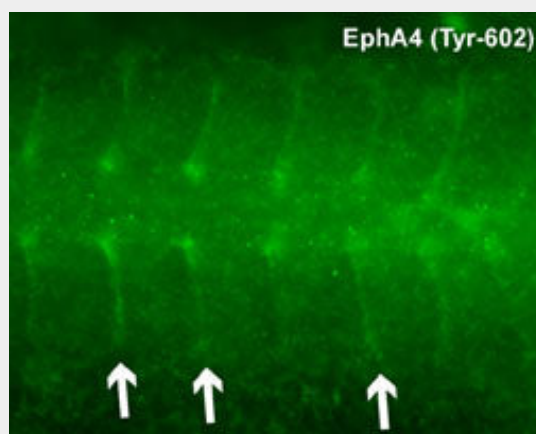
Blue Ice

**Anti-EphA4 (Tyr-602) [conserved site], Phosphospecific Antibody - Protocols**

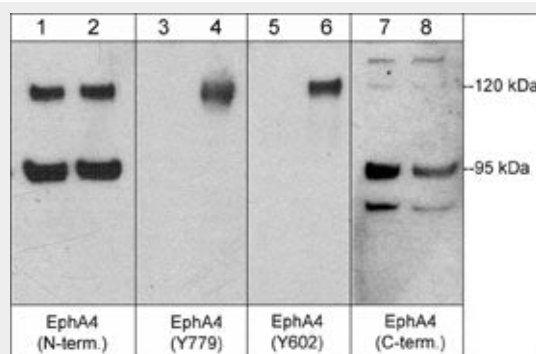
Provided below are standard protocols that you may find useful for product applications.

- [Western Blot](#)
- [Blocking Peptides](#)
- [Dot Blot](#)
- [Immunohistochemistry](#)
- [Immunofluorescence](#)
- [Immunoprecipitation](#)
- [Flow Cytometry](#)
- [Cell Culture](#)

#### Anti-EphA4 (Tyr-602) [conserved site], Phosphospecific Antibody - Images



Paraformaldehyde-fixed zebrafish embryos were probed with anti-EphA4 (Tyr-602) (EP2731) then detected using Alexa Fluor 647 goat anti-rabbit. Arrows show labeling of somite boundaries and the notochord. (Image provided by Dr. Scott Holley at the Department of Molecular, Cellular and Developmental Biology, Yale University.)



Western blot analysis of human umbilical vein endothelial cells untreated (lanes 1, 3, 5, & 7) or treated with pervanadate (1 mM) for 30 min. (lanes 2, 4, 6, & 8). The blot was probed with anti-EphA4 (N-terminal region) (lanes 1 & 2), anti-EphA4 (Tyr-779) (lanes 3 & 4), anti-EphA4 (Tyr-602) (lanes 5 & 6), or anti-EphA4 (C-terminal region) (lanes 7 & 8).

#### Anti-EphA4 (Tyr-602) [conserved site], Phosphospecific Antibody - Background

The Eph family of Receptor tyrosine kinases and their Ephrin ligands are important for cell positioning and morphogenesis during development. Eph receptors are classified into 10 EphA and 6 EphB receptors, which preferentially bind to the type A and type B ephrins, respectively. The EphA4 receptor can inhibit axon outgrowth and has roles in regulating axon projections during neural development. EphA4 signaling pathways require its kinase activity and involve binding and

activation of Rho-GTPase guanine nucleotide-exchange factors (GEFs). EphA4 activation leads to autophosphorylation of Tyr-596 and Tyr-602, and the conserved sites in EphA2 are required for binding to the GEFs, Vav2 and Vav3, and ephrin-induced cell migration. The Tyr-779 site in the kinase domain is also phosphorylated in vivo and may regulate kinase activity. Activated EphA4 leads to Src kinase phosphorylation of the GEF, ephexin-1, and this activates RhoA. Thus, EphA4 signaling involves complex tyrosine phosphorylation in its cytoplasmic region along with interaction with several GEFs.