

Anti-Fascin (clone 55K2) Antibody
Catalog # AN1791**Specification**

Anti-Fascin (clone 55K2) Antibody - Product Information

Application	WB, IHC
Primary Accession	Q16658
Reactivity	Bovine
Host	Mouse
Clonality	Mouse Monoclonal
Isotype	IgG1
Calculated MW	54530

Anti-Fascin (clone 55K2) Antibody - Additional Information

Gene ID	6624
Other Names	
p55	

Target/Specificity

Fascin is an actin filament bundling protein localized to lamellipodia and filopodia where it has important roles in cell motility. Regulation of fascin occurs through PKC-mediated phosphorylation of Ser-39 in the F-actin binding site. Cell permeant peptides that block PKC phosphorylation of Ser-39 increase cell migration, while peptides that block fascin binding to F-actin alter lamellipodial morphology and cause aberrant cell motility. Studies using RNA interference of fascin show that fibroblasts have reduced number and abnormal morphology of filopodia, while Ser-39 phosphorylation status may determine filopodial frequency. In Drosophila neurons, fascin deficiency causes alterations in actin filaments and leads to abnormal morphology of developing neurons. Thus, fascin is a critical element of actin-based motility in various cell types.

Dilution

WB~~1:1000
IHC~~1:100~500

Storage

Maintain refrigerated at 2-8°C for up to 6 months. For long term storage store at -20°C in small aliquots to prevent freeze-thaw cycles.

Precautions

Anti-Fascin (clone 55K2) Antibody is for research use only and not for use in diagnostic or therapeutic procedures.

Shipping

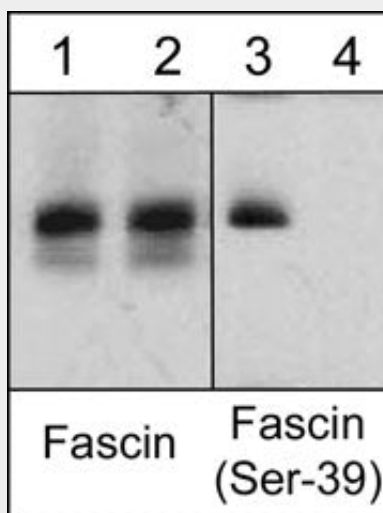
Blue Ice

Anti-Fascin (clone 55K2) Antibody - Protocols

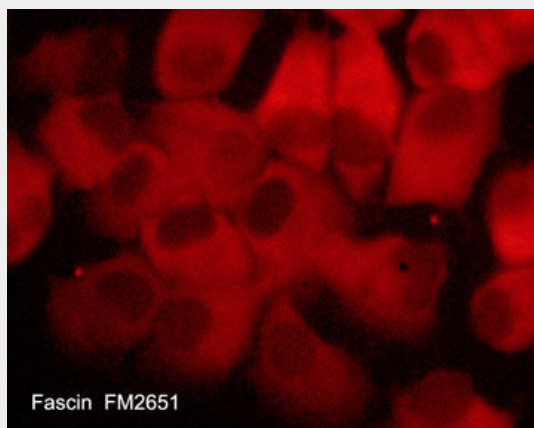
Provided below are standard protocols that you may find useful for product applications.

- [Western Blot](#)
- [Blocking Peptides](#)
- [Dot Blot](#)
- [Immunohistochemistry](#)
- [Immunofluorescence](#)
- [Immunoprecipitation](#)
- [Flow Cytometry](#)
- [Cell Culture](#)

Anti-Fascin (clone 55K2) Antibody - Images



Western blot analysis of human HeLa cells treated with Calyculin A (100 nM) for 30 min (lanes 1 & 3) before treatment with lambda phosphatase (lanes 2 & 4). The blots were probed with anti-Fascin (clone 55K2) (lanes 1 & 2) and anti-Fascin (Ser-39) (lanes 3 & 4).



Immunocytochemical labeling of Fascin in aldehyde fixed and NP-40 permeabilized human NCI-H1915 lung carcinoma cells. The cells were labeled with mouse monoclonal anti-Fascin (FM2651). The antibody was detected using goat anti-mouse DyLight® 594.

Anti-Fascin (clone 55K2) Antibody - Background

Fascin is an actin filament bundling protein localized to lamellipodia and filopodia where it has important roles in cell motility. Regulation of fascin occurs through PKC-mediated phosphorylation of Ser-39 in the F-actin binding site. Cell permeant peptides that block PKC phosphorylation of Ser-39 increase cell migration, while peptides that block fascin binding to F-actin alter lamellipodial morphology and cause aberrant cell motility. Studies using RNA interference of fascin show that

fibroblasts have reduced number and abnormal morphology of filopodia, while Ser-39 phosphorylation status may determine filopodial frequency. In *Drosophila* neurons, fascin deficiency causes alterations in actin filaments and leads to abnormal morphology of developing neurons. Thus, fascin is a critical element of actin-based motility in various cell types.